

MLH1 Antibody (Center) (Ascites)
Mouse Monoclonal Antibody (Mab)
Catalog # AM2151a**Specification**

MLH1 Antibody (Center) (Ascites) - Product Information

Application	WB,E
Primary Accession	P40692
Other Accession	NP_000240
Reactivity	Human
Host	Mouse
Clonality	Monoclonal
Isotype	IgG1
Calculated MW	84601
Antigen Region	458-489

MLH1 Antibody (Center) (Ascites) - Additional Information**Gene ID** 4292**Other Names**

DNA mismatch repair protein Mlh1, MutL protein homolog 1, MLH1, COCA2

Target/Specificity

This MLH1 antibody is generated from mice immunized with a KLH conjugated synthetic peptide between 458-489 amino acids from the Central region of human MLH1.

Dilution

WB~~1:500~1000

Format

Mouse monoclonal antibody supplied in crude ascites with 0.09% (W/V) sodium azide.

Storage

Maintain refrigerated at 2-8°C for up to 2 weeks. For long term storage store at -20°C in small aliquots to prevent freeze-thaw cycles.

Precautions

MLH1 Antibody (Center) (Ascites) is for research use only and not for use in diagnostic or therapeutic procedures.

MLH1 Antibody (Center) (Ascites) - Protein Information**Name** MLH1**Synonyms** COCA2**Function** Heterodimerizes with PMS2 to form MutL alpha, a component of the post-replicative

DNA mismatch repair system (MMR). DNA repair is initiated by MutS alpha (MSH2-MSH6) or MutS beta (MSH2-MSH3) binding to a dsDNA mismatch, then MutL alpha is recruited to the heteroduplex. Assembly of the MutL-MutS-heteroduplex ternary complex in presence of RFC and PCNA is sufficient to activate endonuclease activity of PMS2. It introduces single-strand breaks near the mismatch and thus generates new entry points for the exonuclease EXO1 to degrade the strand containing the mismatch. DNA methylation would prevent cleavage and therefore assure that only the newly mutated DNA strand is going to be corrected. MutL alpha (MLH1-PMS2) interacts physically with the clamp loader subunits of DNA polymerase III, suggesting that it may play a role to recruit the DNA polymerase III to the site of the MMR. Also implicated in DNA damage signaling, a process which induces cell cycle arrest and can lead to apoptosis in case of major DNA damages. Heterodimerizes with MLH3 to form MutL gamma which plays a role in meiosis.

Cellular Location

Nucleus. Chromosome Note=Recruited to chromatin in a MCM9-dependent manner

Tissue Location

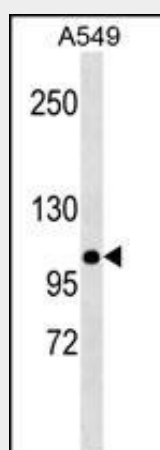
Colon, lymphocytes, breast, lung, spleen, testis, prostate, thyroid, gall bladder and heart

MLH1 Antibody (Center) (Ascites) - Protocols

Provided below are standard protocols that you may find useful for product applications.

- [Western Blot](#)
- [Blocking Peptides](#)
- [Dot Blot](#)
- [Immunohistochemistry](#)
- [Immunofluorescence](#)
- [Immunoprecipitation](#)
- [Flow Cytometry](#)
- [Cell Culture](#)

MLH1 Antibody (Center) (Ascites) - Images



MLH1 Antibody (Center)(Ascites)(Cat. #AM2151a) western blot analysis in A549 cell line lysates (35µg/lane). This demonstrates the MLH1 antibody detected the MLH1 protein (arrow).

MLH1 Antibody (Center) (Ascites) - Background

This gene was identified as a locus frequently mutated in

hereditary nonpolyposis colon cancer (HNPCC). It is a human homolog of the E. coli DNA mismatch repair gene mutL, consistent with the characteristic alterations in microsatellite sequences (RER+phenotype) found in HNPCC. Alternative splicing results in multiple transcript variants encoding distinct isoforms. Additional transcript variants have been described, but their full-length natures have not been determined.

MLH1 Antibody (Center) (Ascites) - References

Ling, Z.Q., et al. Cancer Lett. 297(2):244-251(2010)
Qi, Y., et al. J. Biol. Chem. 285(43):33010-33017(2010)
Borras, E., et al. Cancer Res. 70(19):7379-7391(2010)
Mangoni, M., et al. Int. J. Radiat. Oncol. Biol. Phys. (2010) In press :
Ho-Pun-Cheung, A., et al. Pharmacogenomics J. (2010) In press :