

**OTX2 Anitbody**  
**Purified Mouse Monoclonal Antibody (Mab)**  
**Catalog # AM8426b****Specification**

---

**OTX2 Anitbody - Product Information**

|                   |                        |
|-------------------|------------------------|
| Application       | WB,E                   |
| Primary Accession | <a href="#">P32243</a> |
| Reactivity        | Human                  |
| Host              | Mouse                  |
| Clonality         | Monoclonal             |
| Isotype           | IgG1, $\kappa$         |
| Calculated MW     | 31636                  |

**OTX2 Anitbody - Additional Information****Gene ID** 5015**Other Names**

Homeobox protein OTX2, Orthodenticle homolog 2, OTX2

**Target/Specificity**

This antibody is generated from a mouse immunized with a recombination protein from human.

**Dilution**

WB~~1:2000

**Format**

Purified monoclonal antibody supplied in PBS with 0.09% (W/V) sodium azide. This antibody is purified through a protein G column, followed by dialysis against PBS.

**Storage**

Maintain refrigerated at 2-8°C for up to 2 weeks. For long term storage store at -20°C in small aliquots to prevent freeze-thaw cycles.

**Precautions**

OTX2 Anitbody is for research use only and not for use in diagnostic or therapeutic procedures.

**OTX2 Anitbody - Protein Information****Name** OTX2**Function** Transcription factor probably involved in the development of the brain and the sense organs. Can bind to the bicoid/BCD target sequence (BTS): 5'-TCTAATCCC-3'.**Cellular Location**

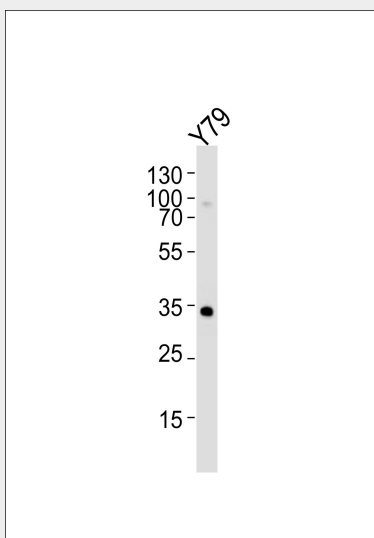
Nucleus.

## OTX2 Anitbody - Protocols

Provided below are standard protocols that you may find useful for product applications.

- [Western Blot](#)
- [Blocking Peptides](#)
- [Dot Blot](#)
- [Immunohistochemistry](#)
- [Immunofluorescence](#)
- [Immunoprecipitation](#)
- [Flow Cytometry](#)
- [Cell Culture](#)

## OTX2 Anitbody - Images



Western blot analysis of lysate from Y79 cell line, using OTX2 Anitbody (Cat. #AM8426b). AM8426b was diluted at 1:1000. A goat anti-mouse IgG H&L(HRP) at 1:3000 dilution was used as the secondary antibody. Lysate at 35µg.

## OTX2 Anitbody - Background

Probably plays a role in the development of the brain and the sense organs. Can bind to the BCD target sequence (BTS): 5'-TCTAATCCC-3'.

## OTX2 Anitbody - References

- Simeone A., et al. EMBO J. 12:2735-2747(1993).  
Perrault I., et al. Submitted (AUG-2000) to the EMBL/GenBank/DDBJ databases.  
Fong S.L., et al. Curr. Eye Res. 18:283-291(1999).  
Ota T., et al. Nat. Genet. 36:40-45(2004).  
Mural R.J., et al. Submitted (JUL-2005) to the EMBL/GenBank/DDBJ databases.