

**CAPN2 Antibody**  
**Purified Mouse Monoclonal Antibody (Mab)**  
**Catalog # AM8436b****Specification**

---

**CAPN2 Antibody - Product Information**

Application	WB, IHC-P, FC,E
Primary Accession	<a href="#">P17655</a>
Reactivity	Human
Host	Mouse
Clonality	Monoclonal
Isotype	IgG2b
Calculated MW	79995
Antigen Region	1-400

**CAPN2 Antibody - Additional Information****Gene ID** 824**Other Names**

Calpain-2 catalytic subunit, Calcium-activated neutral proteinase 2, CANP 2, Calpain M-type, Calpain large polypeptide L2, Calpain-2 large subunit, Millimolar-calpain, M-calpain, CAPN2, CANPL2

**Target/Specificity**

This CAPN2 antibody is generated from a mouse immunized with a KLH conjugated synthetic peptide between amino acids from the human region of human CAPN2.

**Dilution**

WB~~1:1000  
IHC-P~~1:25  
FC~~1:100

**Format**

Purified monoclonal antibody supplied in PBS with 0.09% (W/V) sodium azide. This antibody is purified through a protein G column, followed by dialysis against PBS.

**Storage**

Maintain refrigerated at 2-8°C for up to 2 weeks. For long term storage store at -20°C in small aliquots to prevent freeze-thaw cycles.

**Precautions**

CAPN2 Antibody is for research use only and not for use in diagnostic or therapeutic procedures.

**CAPN2 Antibody - Protein Information****Name** CAPN2

## Synonyms CANPL2

**Function** Calcium-regulated non-lysosomal thiol-protease which catalyzes limited proteolysis of substrates involved in cytoskeletal remodeling and signal transduction. Proteolytically cleaves MYOC at 'Arg-226' (PubMed:[17650508](#)). Proteolytically cleaves CPEB3 following neuronal stimulation which abolishes CPEB3 translational repressor activity, leading to translation of CPEB3 target mRNAs (By similarity).

## Cellular Location

Cytoplasm. Cell membrane. Note=Translocates to the plasma membrane upon Ca(2+) binding

## Tissue Location

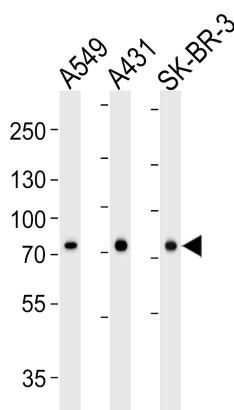
Ubiquitous.

## CAPN2 Antibody - Protocols

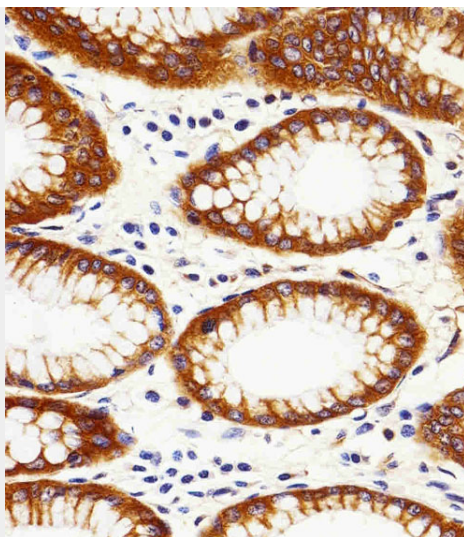
Provided below are standard protocols that you may find useful for product applications.

- [Western Blot](#)
- [Blocking Peptides](#)
- [Dot Blot](#)
- [Immunohistochemistry](#)
- [Immunofluorescence](#)
- [Immunoprecipitation](#)
- [Flow Cytometry](#)
- [Cell Culture](#)

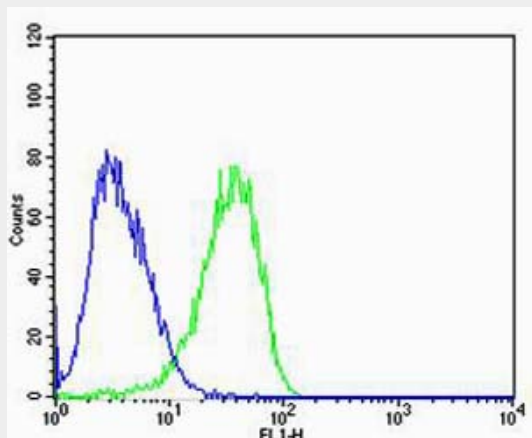
## CAPN2 Antibody - Images



Western blot analysis of lysates from A549, A431, SK-BR-3 cell line (from left to right), using CAPN2 Antibody (Cat. #AM8436b). AM8436b was diluted at 1:1000 at each lane. A goat anti-mouse IgG H&L(HRP) at 1:3000 dilution was used as the secondary antibody. Lysates at 35µg per lane.



Immunohistochemical analysis of paraffin-embedded H. stomach section using CAPN2 Antibody(Cat#AM8436b). AM8436b was diluted at 1:25 dilution. A peroxidase-conjugated goat anti-mouse IgG at 1:400 dilution was used as the secondary antibody, followed by DAB staining.



Flow cytometric analysis of U-87 MG cells using CAPN2 Antibody(green, Cat#AM8436b) compared to an isotype control of mouse IgG2b(blue). AP20600c was diluted at 1:100 dilution. An Alexa Fluor® 488 goat anti-mouse IgG at 1:400 dilution was used as the secondary antibody.

### **CAPN2 Antibody - Background**

Calcium-regulated non-lysosomal thiol-protease which catalyze limited proteolysis of substrates involved in cytoskeletal remodeling and signal transduction.

### **CAPN2 Antibody - References**

- Imajoh S.,et al.Biochemistry 27:8122-8128(1988).
- Ye Z.,et al.Biochem. Biophys. Res. Commun. 275:223-227(2000).
- Ota T.,et al.Nat. Genet. 36:40-45(2004).
- Gregory S.G.,et al.Nature 441:315-321(2006).
- Hata A.,et al.J. Biol. Chem. 264:6404-6411(1989).