

**Myoglobin Antibody (C-term)**  
**Purified Mouse Monoclonal Antibody (Mab)**  
**Catalog # AM8438c**

**Specification**

---

**Myoglobin Antibody (C-term) - Product Information**

Application	WB,E
Primary Accession	<a href="#">P02144</a>
Other Accession	<a href="#">P02189</a> , <a href="#">P02150</a> , <a href="#">P68082</a>
Reactivity	Mouse
Predicted	Horse, Monkey, Pig
Host	Mouse
Clonality	Monoclonal
Isotype	IgG1

**Myoglobin Antibody (C-term) - Additional Information**

**Gene ID** 4151

**Other Names**  
Myoglobin, MB

**Target/Specificity**

This Myoglobin antibody is generated from a mouse immunized with a KLH conjugated synthetic peptide between 118-150 amino acids from the C-terminal region of human Myoglobin.

**Dilution**

WB~~1:1000

**Format**

Purified monoclonal antibody supplied in PBS with 0.09% (W/V) sodium azide. This antibody is purified through a protein G column, followed by dialysis against PBS.

**Storage**

Maintain refrigerated at 2-8°C for up to 2 weeks. For long term storage store at -20°C in small aliquots to prevent freeze-thaw cycles.

**Precautions**

Myoglobin Antibody (C-term) is for research use only and not for use in diagnostic or therapeutic procedures.

**Myoglobin Antibody (C-term) - Protein Information**

**Name** MB ([HGNC:6915](#))

**Function** Monomeric heme protein which primary function is to store oxygen and facilitate its diffusion within muscle tissues. Reversibly binds oxygen through a pentacoordinated heme iron and enables its timely and efficient release as needed during periods of heightened demand

(PubMed:[30918256](#), PubMed:[34679218](#)). Depending on the oxidative conditions of tissues and cells, and in addition to its ability to bind oxygen, it also has a nitrite reductase activity whereby it regulates the production of bioactive nitric oxide (PubMed:[32891753](#)). Under stress conditions, like hypoxia and anoxia, it also protects cells against reactive oxygen species thanks to its pseudoperoxidase activity (PubMed:[34679218](#)).

#### Cellular Location

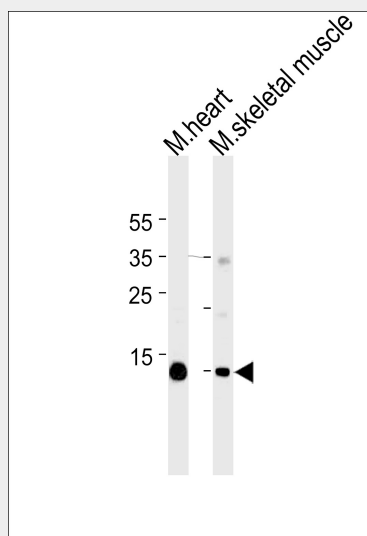
Cytoplasm, sarcoplasm

### Myoglobin Antibody (C-term) - Protocols

Provided below are standard protocols that you may find useful for product applications.

- [Western Blot](#)
- [Blocking Peptides](#)
- [Dot Blot](#)
- [Immunohistochemistry](#)
- [Immunofluorescence](#)
- [Immunoprecipitation](#)
- [Flow Cytometry](#)
- [Cell Culture](#)

### Myoglobin Antibody (C-term) - Images



Western blot analysis of lysates from mouse heart and skeletal muscle tissue lysates (from left to right), using Myoglobin Antibody (C-term)(Cat. #AM8438c). AM8438c was diluted at 1:1000 at each lane. A goat anti-mouse IgG H&L(HRP) at 1:3000 dilution was used as the secondary antibody. Lysates at 35µg per lane.

### Myoglobin Antibody (C-term) - Background

Serves as a reserve supply of oxygen and facilitates the movement of oxygen within muscles.

### Myoglobin Antibody (C-term) - References

Weller P.,et al.EMBO J. 3:439-446(1984).  
Akaboshi E.,et al.Gene 33:241-249(1985).

Collins J.E.,et al.Genome Biol. 5:R84.1-R84.11(2004).  
Ebert L.,et al.Submitted (JUN-2004) to the EMBL/GenBank/DDBJ databases.  
Dunham I.,et al.Nature 402:489-495(1999).