

**FAM120A Antibody**  
**Purified Mouse Monoclonal Antibody (Mab)**  
**Catalog # AM8475b****Specification**

---

**FAM120A Antibody - Product Information**

Application	IF, WB, IHC-P,E
Primary Accession	<a href="#">Q9NZB2</a>
Reactivity	Human
Host	Mouse
Clonality	monoclonal
Isotype	IgG1,k
Calculated MW	121888

**FAM120A Antibody - Additional Information****Gene ID** 23196**Other Names**

Constitutive coactivator of PPAR-gamma-like protein 1, Oxidative stress-associated Src activator, Protein FAM120A, FAM120A, C9orf10, KIAA0183, OSSA

**Target/Specificity**

This FAM120A antibody is generated from a mouse immunized with a recombinant protein of human FAM120A.

**Dilution**

IF~~1:25

WB~~1:4000

IHC-P~~1:25

**Format**

Purified monoclonal antibody supplied in PBS with 0.09% (W/V) sodium azide. This antibody is purified through a protein G column, followed by dialysis against PBS.

**Storage**

Maintain refrigerated at 2-8°C for up to 2 weeks. For long term storage store at -20°C in small aliquots to prevent freeze-thaw cycles.

**Precautions**

FAM120A Antibody is for research use only and not for use in diagnostic or therapeutic procedures.

**FAM120A Antibody - Protein Information****Name** FAM120A

**Function** Component of the oxidative stress-induced survival signaling. May regulate the activation of SRC family protein kinases (PubMed:[19015244](#)). May act as a scaffolding protein

enabling SRC family protein kinases to phosphorylate and activate PI3-kinase (PubMed:[19015244](#)). Binds IGF2 RNA and promotes the production of IGF2 protein (PubMed:[19015244](#)).

#### Cellular Location

Cytoplasm. Cell membrane; Peripheral membrane protein; Cytoplasmic side. Note=Translocates from the cytosol to plasma membrane after UV irradiation.

#### Tissue Location

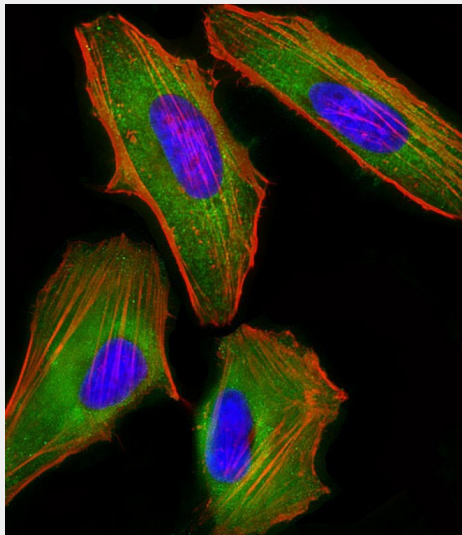
Widely expressed (PubMed:14585507). In gastric mucosa, detected in the bottom region of the foveolar epithelium (at protein level) (PubMed:19015244).

### FAM120A Antibody - Protocols

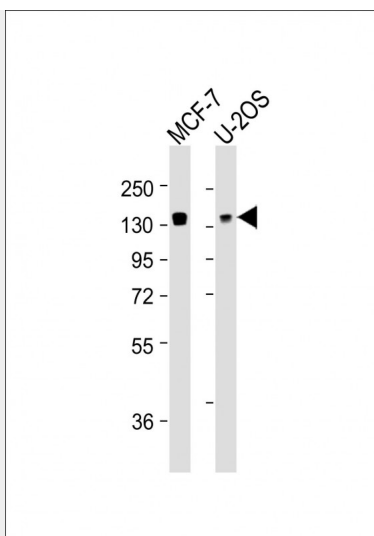
Provided below are standard protocols that you may find useful for product applications.

- [Western Blot](#)
- [Blocking Peptides](#)
- [Dot Blot](#)
- [Immunohistochemistry](#)
- [Immunofluorescence](#)
- [Immunoprecipitation](#)
- [Flow Cytometry](#)
- [Cell Culture](#)

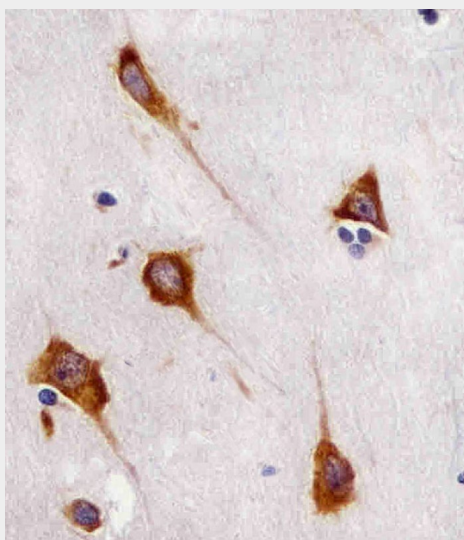
### FAM120A Antibody - Images



Immunofluorescent analysis of 4% paraformaldehyde-fixed, 0.1% Triton X-100 permeabilized HeLa (human cervical epithelial adenocarcinoma cell line) cells labeling FAM120A with AM8475b at 1/25 dilution, followed by Dylight® 488-conjugated goat anti-mouse IgG (NA166821) secondary antibody at 1/200 dilution (green). Immunofluorescence image showing cytoplasm staining on HeLa cell line. Cytoplasmic actin is detected with Dylight® 554 Phalloidin (PD18466410) at 1/100 dilution (red). The nuclear counter stain is DAPI (blue).



All lanes : Anti-FAM120A Antibody at 1:4000 dilution Lane 1: MCF-7 whole cell lysates Lane 2: U-2OS whole cell lysates Lysates/proteins at 20 µg per lane. Secondary Goat Anti-mouse IgG, (H+L), Peroxidase conjugated at 1/10000 dilution. Predicted band size : 122 kDa Blocking/Dilution buffer: 5% NFDM/TBST.



AM8475b staining FAM120A in human brain sections by Immunohistochemistry (IHC-P - paraformaldehyde-fixed, paraffin-embedded sections). Tissue was fixed with formaldehyde and blocked with 3% BSA for 0.5 hour at room temperature; antigen retrieval was by heat mediation with a citrate buffer (pH6). Samples were incubated with primary antibody (1/25) for 1 hours at 37°C. A undiluted biotinylated goat polyvalent antibody was used as the secondary antibody.

#### **FAM120A Antibody - Background**

May participate in mRNA transport in the cytoplasm (By similarity). Critical component of the oxidative stress-induced survival signaling. Activates src family kinases and acts as a scaffolding protein enabling src family kinases to phosphorylate and activate PI3-kinase. Binds RNA and promotes the secretion of IGF-II. May play a pivotal role in the progression of scirrhou- type gastric cancer by supporting cancer cell survival in environments with various oxidative stresses.

#### **FAM120A Antibody - References**

Brahmbhatt S.B.,et al.Submitted (NOV-1999) to the EMBL/GenBank/DDBJ databases.

Humphray S.J.,et al.Nature 429:369-374(2004).

Nagase T.,et al.DNA Res. 3:17-24(1996).

Ohara O.,et al.Submitted (JUN-2005) to the EMBL/GenBank/DDBJ databases.

Holden S.,et al.Gene 318:149-161(2003).