

**MPIP3 Antibody**  
**Purified Mouse Monoclonal Antibody (Mab)**  
**Catalog # AM8486b****Specification**

---

**MPIP3 Antibody - Product Information**

Application	WB, IHC-P,E
Primary Accession	<a href="#">P30307</a>
Reactivity	Human
Host	Mouse
Clonality	monoclonal
Isotype	IgG2a, $\kappa$
Calculated MW	53365

**MPIP3 Antibody - Additional Information****Gene ID** 995**Other Names**

M-phase inducer phosphatase 3, Dual specificity phosphatase Cdc25C, CDC25C

**Target/Specificity**

This MPIP3 antibody is generated from a mouse immunized with a recombinant protein.

**Dilution**

WB~~1:1000-1:2000

IHC-P~~1:25

**Format**

Purified monoclonal antibody supplied in PBS with 0.09% (W/V) sodium azide. This antibody is purified through a protein G column, followed by dialysis against PBS.

**Storage**

Maintain refrigerated at 2-8°C for up to 2 weeks. For long term storage store at -20°C in small aliquots to prevent freeze-thaw cycles.

**Precautions**

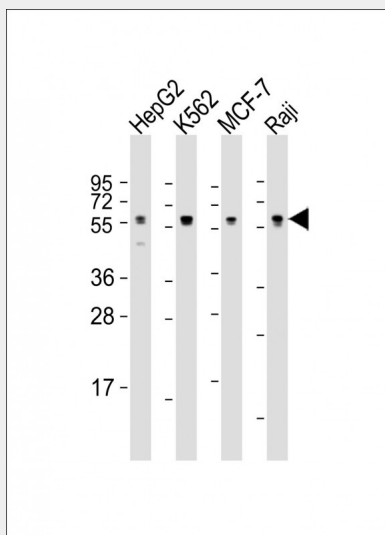
MPIP3 Antibody is for research use only and not for use in diagnostic or therapeutic procedures.

**MPIP3 Antibody - Protein Information****Name** CDC25C**Function** Functions as a dosage-dependent inducer in mitotic control. Tyrosine protein phosphatase required for progression of the cell cycle (PubMed:[8119945](#)). When phosphorylated, highly effective in activating G2 cells into prophase (PubMed:[8119945](#)). Directly dephosphorylates CDK1 and activates its kinase activity (PubMed:[8119945](#)).

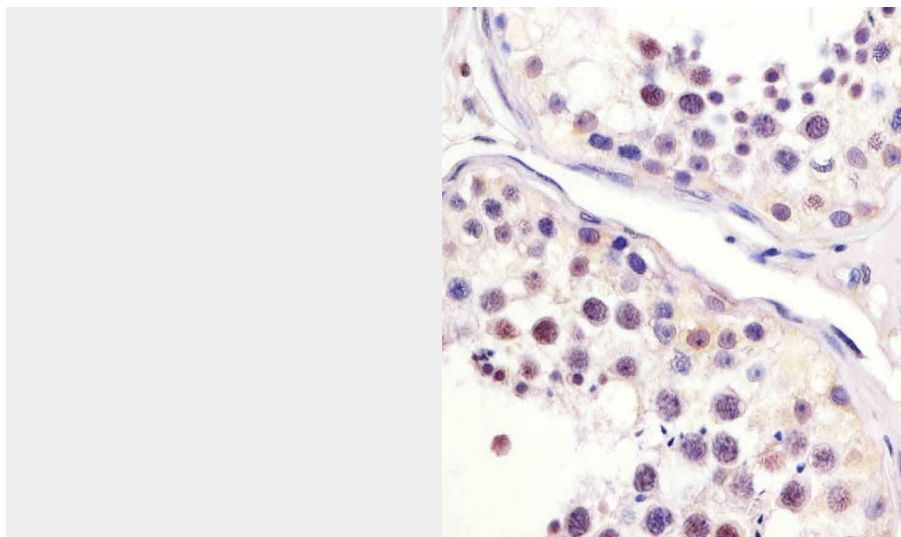
**Cellular Location**  
Nucleus**MPIP3 Antibody - Protocols**

Provided below are standard protocols that you may find useful for product applications.

- [Western Blot](#)
- [Blocking Peptides](#)
- [Dot Blot](#)
- [Immunohistochemistry](#)
- [Immunofluorescence](#)
- [Immunoprecipitation](#)
- [Flow Cytometry](#)
- [Cell Culture](#)

**MPIP3 Antibody - Images**

All lanes : Anti-MPIP3 Antibody at 1:1000-1:2000 dilution Lane 1: HepG2 whole cell lysate Lane 2: K562 whole cell lysate Lane 3: MCF-7 whole cell lysate Lane 4: Raji whole cell lysate Lysates/proteins at 20 µg per lane. Secondary Goat Anti-mouse IgG, (H+L), Peroxidase conjugated at 1/10000 dilution. Predicted band size : 53 kDa Blocking/Dilution buffer: 5% NFDM/TBST.



AM8486b staining MIP3 in human testis sections by Immunohistochemistry (IHC-P - paraformaldehyde-fixed, paraffin-embedded sections). Tissue was fixed with formaldehyde and blocked with 3% BSA for 0.5 hour at room temperature; antigen retrieval was by heat mediation with a citrate buffer (pH6). Samples were incubated with primary antibody (1/25) for 1 hour at 37°C. A undiluted biotinylated goat polyvalent antibody was used as the secondary antibody.

#### **MIP3 Antibody - Background**

Functions as a dosage-dependent inducer in mitotic control. Tyrosine protein phosphatase required for progression of the cell cycle. When phosphorylated, highly effective in activating G2 cells into prophase. Directly dephosphorylates CDK1 and activates its kinase activity.

#### **MIP3 Antibody - References**

Sadhu K., et al. Proc. Natl. Acad. Sci. U.S.A. 87:5139-5143(1990).  
Bureik M., et al. Int. J. Oncol. 17:1251-1258(2000).  
Mural R.J., et al. Submitted (SEP-2005) to the EMBL/GenBank/DDBJ databases.  
Wegener S., et al. Eur. J. Cell Biol. 79:810-815(2000).  
Hernandez S., et al. Lab. Invest. 81:465-473(2001).