

TUSC2 Antibody
Purified Mouse Monoclonal Antibody (Mab)
Catalog # AM8488b**Specification**

TUSC2 Antibody - Product Information

Application	WB,E
Primary Accession	O75896
Reactivity	Human
Host	Mouse
Clonality	monoclonal
Isotype	IgG1,k
Calculated MW	12074

TUSC2 Antibody - Additional Information**Gene ID** 11334**Other Names**

Tumor suppressor candidate 2, Fusion 1 protein, Fus-1 protein, PDGFA-associated protein 2, TUSC2, C3orf11, FUS1, LGCC, PDAP2

Target/Specificity

This TUSC2 antibody is generated from a mouse immunized with a recombinant protein of human TUSC2.

Dilution

WB~~1:2000

Format

Purified monoclonal antibody supplied in PBS with 0.09% (W/V) sodium azide. This antibody is purified through a protein G column, followed by dialysis against PBS.

Storage

Maintain refrigerated at 2-8°C for up to 2 weeks. For long term storage store at -20°C in small aliquots to prevent freeze-thaw cycles.

Precautions

TUSC2 Antibody is for research use only and not for use in diagnostic or therapeutic procedures.

TUSC2 Antibody - Protein Information**Name** TUSC2**Synonyms** C3orf11, FUS1, LGCC, PDAP2

Function May function as a tumor suppressor, inhibiting colony formation, causing G1 arrest and ultimately inducing apoptosis in homozygous 3p21.3 120-kb region-deficient cells.

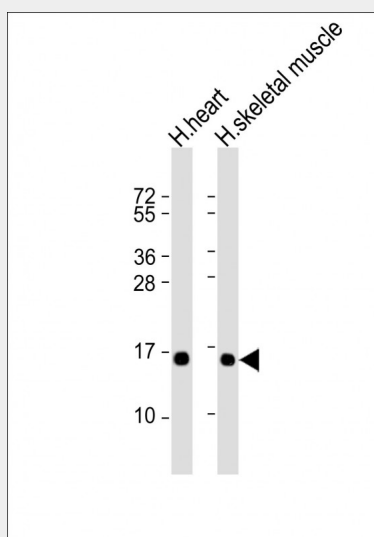
Tissue Location

Strong expression in heart, lung, skeletal muscle, kidney, and pancreas, followed by brain and liver, lowest levels in placenta

TUSC2 Antibody - Protocols

Provided below are standard protocols that you may find useful for product applications.

- [Western Blot](#)
- [Blocking Peptides](#)
- [Dot Blot](#)
- [Immunohistochemistry](#)
- [Immunofluorescence](#)
- [Immunoprecipitation](#)
- [Flow Cytometry](#)
- [Cell Culture](#)

TUSC2 Antibody - Images

All lanes : Anti-TUSC2 Antibody at 1:2000 dilution Lane 1: human heart lysate Lane 2: human skeletal muscle lysate Lysates/proteins at 20 µg per lane. Secondary Goat Anti-mouse IgG, (H+L), Peroxidase conjugated at 1/10000 dilution. Predicted band size : 12 kDa Blocking/Dilution buffer: 5% NFDM/TBST.

TUSC2 Antibody - Background

May function as a tumor suppressor, inhibiting colony formation, causing G1 arrest and ultimately inducing apoptosis in homozygous 3p21.3 120-kb region-deficient cells.

TUSC2 Antibody - References

Kondo M., et al. *Oncogene* 20:6258-6262(2001).
Ota T., et al. *Nat. Genet.* 36:40-45(2004).
Mural R.J., et al. Submitted (JUL-2005) to the EMBL/GenBank/DDBJ databases.
Uno F., et al. *Cancer Res.* 64:2969-2976(2004).
Mayya V., et al. *Sci. Signal.* 2:RA46-RA46(2009).