

FAT1 Antibody
Purified Mouse Monoclonal Antibody (Mab)
Catalog # AM8531b**Specification**

FAT1 Antibody - Product Information

Application	WB,E
Primary Accession	Q14517
Reactivity	Human
Host	Mouse
Clonality	monoclonal
Isotype	IgG1,k
Calculated MW	506273

FAT1 Antibody - Additional Information**Gene ID** 2195**Other Names**

Protocadherin Fat 1, Cadherin family member 7, Cadherin-related tumor suppressor homolog, Protein fat homolog, Protocadherin Fat 1, nuclear form, FAT1, CDHF7, FAT

Target/Specificity

This FAT1 antibody is generated from a mouse immunized with a recombinant protein between 4203-4539 amino acids from human FAT1.

Dilution

WB~~1:2000

Format

Purified monoclonal antibody supplied in PBS with 0.09% (W/V) sodium azide. This antibody is purified through a protein G column, followed by dialysis against PBS.

Storage

Maintain refrigerated at 2-8°C for up to 2 weeks. For long term storage store at -20°C in small aliquots to prevent freeze-thaw cycles.

Precautions

FAT1 Antibody is for research use only and not for use in diagnostic or therapeutic procedures.

FAT1 Antibody - Protein Information**Name** FAT1**Synonyms** CDHF7, FAT**Function** [Protocadherin Fat 1]: Plays an essential role for cellular polarization, directed cell migration and modulating cell-cell contact.

Cellular Location

[Protocadherin Fat 1]: Cell membrane; Single-pass type I membrane protein

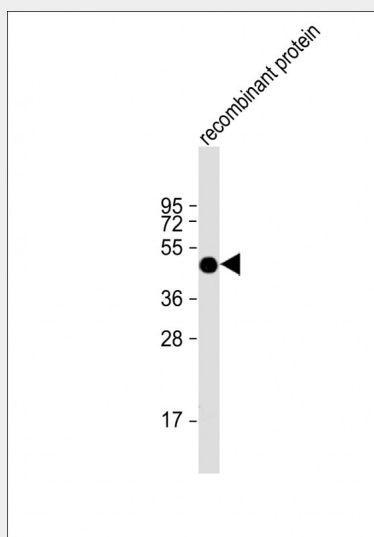
Tissue Location

Expressed in many epithelial and some endothelial and smooth muscle cells

FAT1 Antibody - Protocols

Provided below are standard protocols that you may find useful for product applications.

- [Western Blot](#)
- [Blocking Peptides](#)
- [Dot Blot](#)
- [Immunohistochemistry](#)
- [Immunofluorescence](#)
- [Immunoprecipitation](#)
- [Flow Cytometry](#)
- [Cell Culture](#)

FAT1 Antibody - Images

Anti-FAT1 Antibody at 1:2000 dilution + recombinant protein Lysates/proteins at 20 µg per lane. Secondary Goat Anti-mouse IgG, (H+L), Peroxidase conjugated at 1/10000 dilution. Predicted band size : 506 kDa Blocking/Dilution buffer: 5% NFDM/TBST.

FAT1 Antibody - Background

Plays an essential role for cellular polarization, directed cell migration and modulating cell-cell contact.

FAT1 Antibody - References

- Dunne J., et al. Genomics 30:207-223(1995).
Hillier L.W., et al. Nature 434:724-731(2005).
Magg T., et al. Exp. Cell Res. 307:100-108(2005).
Cantin G.T., et al. J. Proteome Res. 7:1346-1351(2008).
Hou R., et al. J. Biol. Chem. 284:6955-6965(2009).

