

RAB20 Antibody
Purified Mouse Monoclonal Antibody (Mab)
Catalog # AM8559b**Specification**

RAB20 Antibody - Product Information

Application	WB,E
Primary Accession	Q9NX57
Reactivity	Human
Host	Mouse
Clonality	monoclonal
Isotype	IgG2a
Calculated MW	26277

RAB20 Antibody - Additional Information**Gene ID** 55647**Other Names**

Ras-related protein Rab-20, RAB20

Target/Specificity

This RAB20 antibody is generated from a mouse immunized with recombinant protein from human RAB20.

Dilution

WB~~1:2000-1:4000

Format

Purified monoclonal antibody supplied in PBS with 0.09% (W/V) sodium azide. This antibody is purified through a protein G column, followed by dialysis against PBS.

Storage

Maintain refrigerated at 2-8°C for up to 2 weeks. For long term storage store at -20°C in small aliquots to prevent freeze-thaw cycles.

Precautions

RAB20 Antibody is for research use only and not for use in diagnostic or therapeutic procedures.

RAB20 Antibody - Protein Information**Name** RAB20

Function Plays a role in apical endocytosis/recycling. Plays a role in the maturation and acidification of phagosomes that engulf pathogens, such as S.aureus and M.tuberculosis. Plays a role in the fusion of phagosomes with lysosomes.

Cellular Location

Golgi apparatus. Cytoplasmic vesicle, phagosome Cytoplasmic vesicle, phagosome membrane; Lipid-anchor; Cytoplasmic side. Note=Highly enriched on apical endocytic structures in polarized epithelial cells of kidney proximal tubules (By similarity). Recruited to phagosomes containing S.aureus or M.tuberculosis (PubMed:21255211) {ECO:0000250|UniProtKB:P35295, ECO:0000269|PubMed:21255211}

Tissue Location

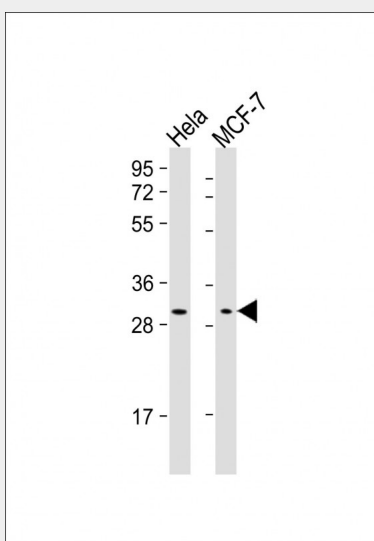
Low or absent expression in normal pancreas and stronger expression in 15 of 18 exocrine pancreatic adenocarcinomas (at protein level).

RAB20 Antibody - Protocols

Provided below are standard protocols that you may find useful for product applications.

- [Western Blot](#)
- [Blocking Peptides](#)
- [Dot Blot](#)
- [Immunohistochemistry](#)
- [Immunofluorescence](#)
- [Immunoprecipitation](#)
- [Flow Cytometry](#)
- [Cell Culture](#)

RAB20 Antibody - Images



All lanes : Anti-RAB20 Antibody at 1:2000-1:4000 dilution Lane 1: HeLa whole cell lysate Lane 2: MCF-7 whole cell lysate Lysates/proteins at 20 µg per lane. Secondary Goat Anti-Mouse IgG, (H+L), Peroxidase conjugated at 1/10000 dilution. Predicted band size : 26 kDa Blocking/Dilution buffer: 5% NFDm/TBST.

RAB20 Antibody - Background

Plays a role in apical endocytosis/recycling. Plays a role in the maturation and acidification of phagosomes that engulf pathogens, such as S.aureus and M.tuberculosis. Plays a role in the fusion of phagosomes with lysosomes.

RAB20 Antibody - References

Amillet J.-M.,et al.Hum. Pathol. 37:256-263(2006).
Ota T.,et al.Nat. Genet. 36:40-45(2004).
Dunham A.,et al.Nature 428:522-528(2004).
Mural R.J.,et al.Submitted (JUL-2005) to the EMBL/GenBank/DDBJ databases.
Seto S.,et al.Traffic 12:407-420(2011).