

**RAB21 Antibody**  
**Purified Mouse Monoclonal Antibody (Mab)**  
**Catalog # AM8573b****Specification**

---

**RAB21 Antibody - Product Information**

Application	WB,E
Primary Accession	<a href="#">O9UL25</a>
Reactivity	Human, African Green Monkey
Host	Mouse
Clonality	monoclonal
Isotype	IgG2b, $\kappa$
Calculated MW	24348

**RAB21 Antibody - Additional Information****Gene ID** 23011**Other Names**

Ras-related protein Rab-21, RAB21, KIAA0118

**Target/Specificity**

This RAB21 antibody is generated from a mouse immunized with a recombinant protein between 1-225 amino acids from the human RAB21.

**Dilution**

WB~~1:2000

**Format**

Purified monoclonal antibody supplied in PBS with 0.09% (W/V) sodium azide. This antibody is purified through a protein G column, followed by dialysis against PBS.

**Storage**

Maintain refrigerated at 2-8°C for up to 2 weeks. For long term storage store at -20°C in small aliquots to prevent freeze-thaw cycles.

**Precautions**

RAB21 Antibody is for research use only and not for use in diagnostic or therapeutic procedures.

**RAB21 Antibody - Protein Information****Name** RAB21 ([HGNC:18263](#))**Synonyms** KIAA0118

**Function** Small GTPase involved in membrane trafficking control (PubMed:[18804435](#), PubMed:[25648148](#)). During the mitosis of adherent cells, controls the endosomal trafficking of integrins which is required for the successful completion of cytokinesis (PubMed:[18804435](#)).

Regulates integrin internalization and recycling, but does not influence the traffic of endosomally translocated receptors in general (By similarity). As a result, may regulate cell adhesion and migration (By similarity). Involved in neurite growth (By similarity). Following SBF2/MTMT13-mediated activation in response to starvation-induced autophagy, binds to and regulates SNARE protein VAMP8 endolysosomal transport required for SNARE-mediated autophagosome-lysosome fusion (PubMed:[25648148](#)). Modulates protein levels of the cargo receptors TMED2 and TMED10, and required for appropriate Golgi localization of TMED10 (PubMed:[31455601](#)).

#### **Cellular Location**

Endoplasmic reticulum membrane; Lipid-anchor. Golgi apparatus, trans-Golgi network. Golgi apparatus membrane. Early endosome membrane. Cytoplasmic vesicle membrane. Cleavage furrow. Cell projection, neuron projection {ECO:0000250|UniProtKB:P35282}. Note=Colocalizes with ANKRD27 and VAMP7 in neurites (By similarity). In nonpolarized epithelial Caco-2 cells, found in the endoplasmic reticulum; in polarized cells, observed in vesicles in the apical cytoplasm (PubMed:10887961). During mitosis, in mid-telophase, localized in the ingressing cleavage furrow (PubMed:18804435). In late telophase, detected at the opposite poles of the daughter cells, in vesicles at the base of lamellipodia formed by the separating daughter cells (PubMed:18804435) {ECO:0000250|UniProtKB:P35282, ECO:0000269|PubMed:10887961, ECO:0000269|PubMed:18804435}

#### **Tissue Location**

Widely expressed. In jejunal tissue, predominantly expressed in the apical region of the epithelial cell layer of the villi, weak expression, if any, in the crypt epithelium. Capillary endothelium and some cell types in the lamina propria also show expression.

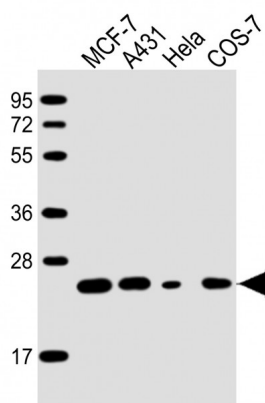
### **RAB21 Antibody - Protocols**

Provided below are standard protocols that you may find useful for product applications.

- [Western Blot](#)
- [Blocking Peptides](#)
- [Dot Blot](#)
- [Immunohistochemistry](#)
- [Immunofluorescence](#)
- [Immunoprecipitation](#)
- [Flow Cytometry](#)
- [Cell Culture](#)

### **RAB21 Antibody - Images**





All lanes : Anti-RAB21 Antibody at 1:2000 dilution Lane 1: MCF-7 whole cell lysate Lane 2: A431 whole cell lysate Lane 3: HeLa whole cell lysate Lane 4: COS-7 whole cell lysate Lysates/proteins at 20 µg per lane. Secondary Goat Anti-mouse IgG, (H+L), Peroxidase conjugated at 1/10000 dilution. Predicted band size : 24 kDa Blocking/Dilution buffer: 5% NFDM/TBST.

#### **RAB21 Antibody - Background**

Regulates integrin internalization and recycling, but does not influence the traffic of endosomally translocated receptors in general. As a result, may regulate cell adhesion and migration (By similarity). During the mitosis of adherent cells, controls the endosomal trafficking of integrins which is required for the successful completion of cytokinesis. Involved in neurite growth (By similarity).

#### **RAB21 Antibody - References**

Opdam F.J.M.,et al.Eur. J. Cell Biol. 79:308-316(2000).  
Bienvenut W.V.,et al.Submitted (JUN-2005) to UniProtKB.  
Nagase T.,et al.DNA Res. 2:37-43(1995).  
Simpson J.C.,et al.J. Cell Sci. 117:6297-6311(2004).  
Zhang X.,et al.J. Cell Sci. 119:1053-1062(2006).