

**WBP2 Antibody (C-term)**  
**Purified Mouse Monoclonal Antibody (Mab)**  
**Catalog # AM8599b****Specification**

---

**WBP2 Antibody (C-term) - Product Information**

Application	WB,E
Primary Accession	<a href="#">Q969T9</a>
Reactivity	Human, Mouse
Host	Mouse
Clonality	monoclonal
Isotype	IgG1
Calculated MW	28087

**WBP2 Antibody (C-term) - Additional Information****Gene ID** 23558**Other Names**

WW domain-binding protein 2, WBP-2, WBP2

**Target/Specificity**

This WBP2 antibody is generated from a mouse immunized with a recombinant protein between 1-261 amino acids from the C-terminal region of human WBP2.

**Dilution**

WB~~1:2000

**Format**

Purified monoclonal antibody supplied in PBS with 0.09% (W/V) sodium azide. This antibody is purified through a protein G column, followed by dialysis against PBS.

**Storage**

Maintain refrigerated at 2-8°C for up to 2 weeks. For long term storage store at -20°C in small aliquots to prevent freeze-thaw cycles.

**Precautions**

WBP2 Antibody (C-term) is for research use only and not for use in diagnostic or therapeutic procedures.

**WBP2 Antibody (C-term) - Protein Information****Name** WBP2

**Function** Acts as a transcriptional coactivator of estrogen and progesterone receptors (ESR1 and PGR) upon hormone activation (PubMed:[16772533](#)). In presence of estrogen, binds to ESR1-responsive promoters (PubMed:[16772533](#)). Required for YAP1 coactivation function on PGR activity (PubMed:[16772533](#)). Synergizes with WBP2 in enhancing PGR activity

(PubMed:[16772533](#)). Modulates expression of post-synaptic scaffolding proteins via regulation of ESR1, ESR2 and PGR (By similarity).

#### Cellular Location

Cytoplasm. Nucleus. Note=Translocates from cytoplasm to nucleus when phosphorylated.

#### Tissue Location

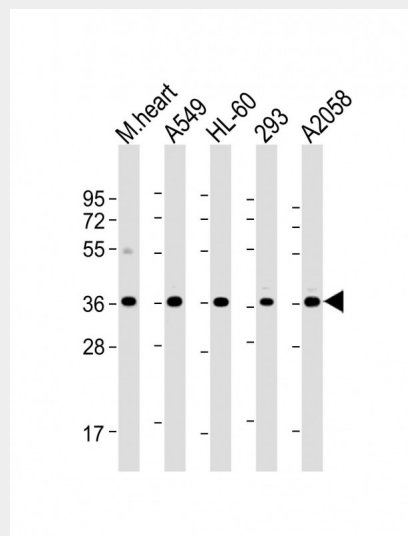
Ubiquitous.

### WBP2 Antibody (C-term) - Protocols

Provided below are standard protocols that you may find useful for product applications.

- [Western Blot](#)
- [Blocking Peptides](#)
- [Dot Blot](#)
- [Immunohistochemistry](#)
- [Immunofluorescence](#)
- [Immunoprecipitation](#)
- [Flow Cytometry](#)
- [Cell Culture](#)

### WBP2 Antibody (C-term) - Images



All lanes : Anti-WBP2 Antibody (C-term) at 1:2000 dilution Lane 1: mouse heart lysate Lane 2: A549 whole cell lysate Lane 3: HL-60 whole cell lysate Lane 4: 293 whole cell lysate Lane 5: A2058 whole cell lysate Lysates/proteins at 20 µg per lane. Secondary Goat Anti-mouse IgG, (H+L), Peroxidase conjugated at 1/10000 dilution. Predicted band size : 28/32 kDa Blocking/Dilution buffer: 5% NFDm/TBST.

### WBP2 Antibody (C-term) - References

Chen H.I.,et al.J. Biol. Chem. 272:17070-17077(1997).  
Pirozzi G.,et al.J. Biol. Chem. 272:14611-14616(1997).  
Burkard T.R.,et al.BMC Syst. Biol. 5:17-17(2011).