

RAB14 Antibody
Purified Mouse Monoclonal Antibody (Mab)
Catalog # AM8601b**Specification**

RAB14 Antibody - Product Information

| | |
|-------------------|--|
| Application | WB,E |
| Primary Accession | P61106 |
| Other Accession | Q5ZKU5 , Q91V41 , Q5R8Z8 |
| Reactivity | Human |
| Predicted | Chicken, Mouse |
| Host | Mouse |
| Clonality | monoclonal |
| Isotype | IgG1,k |
| Calculated MW | 23897 |

RAB14 Antibody - Additional Information**Gene ID** 51552**Other Names**

Ras-related protein Rab-14, RAB14

Target/Specificity

This RAB14 antibody is generated from a mouse immunized with a recombinant protein of human RAB14.

Dilution

WB~~1:2000

Format

Purified monoclonal antibody supplied in PBS with 0.09% (W/V) sodium azide. This antibody is purified through a protein G column, followed by dialysis against PBS.

Storage

Maintain refrigerated at 2-8°C for up to 2 weeks. For long term storage store at -20°C in small aliquots to prevent freeze-thaw cycles.

Precautions

RAB14 Antibody is for research use only and not for use in diagnostic or therapeutic procedures.

RAB14 Antibody - Protein Information**Name** RAB14

Function Involved in membrane trafficking between the Golgi complex and endosomes during early embryonic development. Regulates the Golgi to endosome transport of FGFR-containing vesicles during early development, a key process for developing basement membrane and

epiblast and primitive endoderm lineages during early postimplantation development. May act by modulating the kinesin KIF16B-cargo association to endosomes (By similarity). Regulates, together with its guanine nucleotide exchange factor DENND6A, the specific endocytic transport of ADAM10, N-cadherin/CDH2 shedding and cell-cell adhesion.

Cellular Location

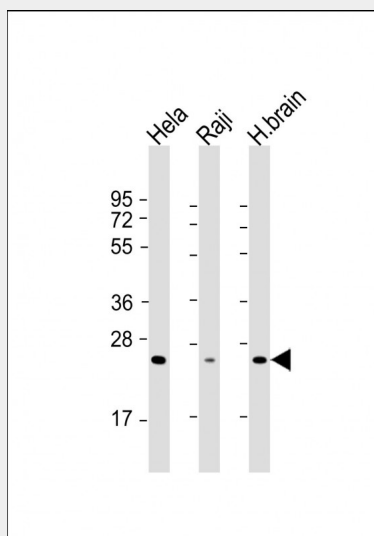
Recycling endosome. Early endosome membrane; Lipid-anchor; Cytoplasmic side. Golgi apparatus membrane; Lipid-anchor; Cytoplasmic side. Golgi apparatus, trans-Golgi network membrane; Lipid-anchor; Cytoplasmic side. Cytoplasmic vesicle, phagosome. Note=Recruited to recycling endosomes by DENND6A (PubMed:22595670). Recruited to phagosomes containing S.aureus or M.tuberculosis (PubMed:21255211).

RAB14 Antibody - Protocols

Provided below are standard protocols that you may find useful for product applications.

- [Western Blot](#)
- [Blocking Peptides](#)
- [Dot Blot](#)
- [Immunohistochemistry](#)
- [Immunofluorescence](#)
- [Immunoprecipitation](#)
- [Flow Cytometry](#)
- [Cell Culture](#)

RAB14 Antibody - Images



All lanes : Anti-RAB14 Antibody at 1:2000 dilution Lane 1: HeLa whole cell lysate Lane 2: Raji whole cell lysate Lane 3: human brain lysate Lysates/proteins at 20 µg per lane. Secondary Goat Anti-mouse IgG, (H+L), Peroxidase conjugated at 1/10000 dilution. Predicted band size : 24 kDa Blocking/Dilution buffer: 5% NFDM/TBST.

RAB14 Antibody - Background

Involved in membrane trafficking between the Golgi complex and endosomes during early embryonic development. Regulates the Golgi to endosome transport of FGFR-containing vesicles during early development, a key process for developing basement membrane and epiblast and

primitive endoderm lineages during early postimplantation development. May act by modulating the kinesin KIF16B-cargo association to endosomes (By similarity). Regulates, together with its guanine nucleotide exchange factor DENND6A, the specific endocytic transport of ADAM10, N-cadherin/CDH2 shedding and cell-cell adhesion.

RAB14 Antibody - References

Proikas-Cezanne T.,et al.Submitted (MAY-1999) to the EMBL/GenBank/DDBJ databases.
Ren Y.,et al.Submitted (NOV-1999) to the EMBL/GenBank/DDBJ databases.
Huang Y.-P.,et al.Submitted (FEB-2004) to the EMBL/GenBank/DDBJ databases.
Hu R.-M.,et al.Proc. Natl. Acad. Sci. U.S.A. 97:9543-9548(2000).
Bechtel S.,et al.BMC Genomics 8:399-399(2007).