

**SYP Antibody (C-term)**  
**Purified Mouse Monoclonal Antibody (Mab)**  
**Catalog # AM8625b**

**Specification**

---

**SYP Antibody (C-term) - Product Information**

Application	WB,E
Primary Accession	<a href="#">P08247</a>
Other Accession	<a href="#">Q62277</a> , <a href="#">P07825</a> , <a href="#">Q5YJC1</a>
Reactivity	Human, Mouse
Predicted	Rat
Host	Mouse
Clonality	monoclonal
Isotype	IgG1,k
Calculated MW	33845

**SYP Antibody (C-term) - Additional Information**

**Gene ID** 6855

**Other Names**

Synaptophysin, Major synaptic vesicle protein p38, SYP

**Target/Specificity**

This SYP antibody is generated from a mouse immunized with a KLH conjugated synthetic peptide between 220-253 amino acids from the C-terminal region of human SYP.

**Dilution**

WB~~1:4000

**Format**

Purified monoclonal antibody supplied in PBS with 0.09% (W/V) sodium azide. This antibody is purified through a protein G column, followed by dialysis against PBS.

**Storage**

Maintain refrigerated at 2-8°C for up to 2 weeks. For long term storage store at -20°C in small aliquots to prevent freeze-thaw cycles.

**Precautions**

SYP Antibody (C-term) is for research use only and not for use in diagnostic or therapeutic procedures.

**SYP Antibody (C-term) - Protein Information**

**Name** SYP

**Function** Possibly involved in structural functions as organizing other membrane components or in targeting the vesicles to the plasma membrane. Involved in the regulation of short-term and

long-term synaptic plasticity (By similarity).

#### Cellular Location

Cytoplasmic vesicle, secretory vesicle, synaptic vesicle membrane; Multi-pass membrane protein. Synapse, synaptosome

#### Tissue Location

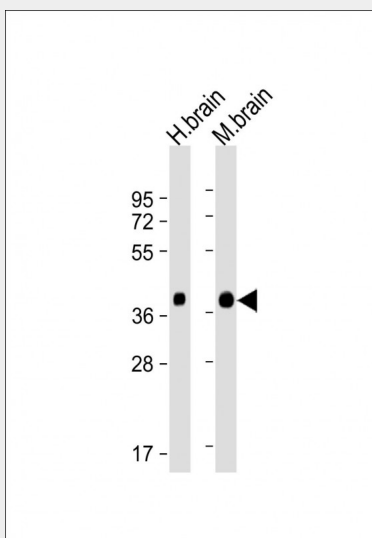
Expressed in the brain, with expression in the hippocampus, the neuropil in the dentate gyrus, where expression is higher in the outer half of the molecular layer than in the inner half, and in the neuropil of CA4 and CA3 (PubMed:8838578). Expressed in the putamen (at protein level) (PubMed:17296554)

### SYP Antibody (C-term) - Protocols

Provided below are standard protocols that you may find useful for product applications.

- [Western Blot](#)
- [Blocking Peptides](#)
- [Dot Blot](#)
- [Immunohistochemistry](#)
- [Immunofluorescence](#)
- [Immunoprecipitation](#)
- [Flow Cytometry](#)
- [Cell Culture](#)

### SYP Antibody (C-term) - Images



All lanes : Anti-SYP Antibody (C-term) at 1:4000 dilution Lane 1: Human brain lysate Lane 2: Mouse brain lysate Lysates/proteins at 20 µg per lane. Secondary Goat Anti-mouse IgG, (H+L), Peroxidase conjugated at 1/10000 dilution. Predicted band size : 38 kDa Blocking/Dilution buffer: 5% NFD/MTBST.

### SYP Antibody (C-term) - Background

Possibly involved in structural functions as organizing other membrane components or in targeting the vesicles to the plasma membrane. Involved in the regulation of short-term and long-term synaptic plasticity (By similarity).

**SYP Antibody (C-term) - References**

Suedhof T.C.,et al.Nucleic Acids Res. 15:9607-9607(1987).  
Oezcelik T.,et al.Am. J. Hum. Genet. 47:551-561(1990).  
Fisher S.E.,et al.Genomics 45:340-347(1997).  
Ota T.,et al.Nat. Genet. 36:40-45(2004).  
Ross M.T.,et al.Nature 434:325-337(2005).