

LMNA Antibody
Purified Mouse Monoclonal Antibody (Mab)
Catalog # AM8634b**Specification**

LMNA Antibody - Product Information

Application	WB,E
Primary Accession	P02545
Reactivity	Human, Mouse, Rat
Host	Mouse
Clonality	monoclonal
Isotype	IgG1,k
Calculated MW	74139

LMNA Antibody - Additional Information**Gene ID** 4000**Other Names**

Prelamin-A/C, Lamin-A/C, 70 kDa lamin, Renal carcinoma antigen NY-REN-32, LMNA, LMN1

Target/Specificity

This antibody is generated from a mouse immunized with a recombinant protein.

Dilution

WB~~1:4000

Format

Purified monoclonal antibody supplied in PBS with 0.09% (W/V) sodium azide. This antibody is purified through a protein G column, followed by dialysis against PBS.

Storage

Maintain refrigerated at 2-8°C for up to 2 weeks. For long term storage store at -20°C in small aliquots to prevent freeze-thaw cycles.

Precautions

LMNA Antibody is for research use only and not for use in diagnostic or therapeutic procedures.

LMNA Antibody - Protein Information**Name** LMNA**Synonyms** LMN1**Function** [Lamin-A/C]: Lamins are intermediate filament proteins that assemble into a filamentous meshwork, and which constitute the major components of the nuclear lamina, a fibrous layer on the nucleoplasmic side of the inner nuclear membrane (PubMed:[2344612](#), PubMed:[2188730](#), PubMed:[24741066](#), PubMed:[10080180](#), PubMed:[10580070](#), PubMed:[10587585](#),

PubMed:[10814726](#), PubMed:[11799477](#), PubMed:[12075506](#), PubMed:[12927431](#), PubMed:[15317753](#), PubMed:[18551513](#), PubMed:[18611980](#), PubMed:[22431096](#), PubMed:[23666920](#), PubMed:[31434876](#), PubMed:[31548606](#), PubMed:[37788673](#), PubMed:[37832547](#)). Lamins provide a framework for the nuclear envelope, bridging the nuclear envelope and chromatin, thereby playing an important role in nuclear assembly, chromatin organization, nuclear membrane and telomere dynamics (PubMed:[24741066](#), PubMed:[10080180](#), PubMed:[10580070](#), PubMed:[10587585](#), PubMed:[10814726](#), PubMed:[11799477](#), PubMed:[12075506](#), PubMed:[12927431](#), PubMed:[15317753](#), PubMed:[18551513](#), PubMed:[18611980](#), PubMed:[22431096](#), PubMed:[23666920](#), PubMed:[31548606](#), PubMed:[37788673](#), PubMed:[37832547](#)). Lamin A and C also regulate matrix stiffness by conferring nuclear mechanical properties (PubMed:[25127216](#), PubMed:[23990565](#)). The structural integrity of the lamina is strictly controlled by the cell cycle, as seen by the disintegration and formation of the nuclear envelope in prophase and telophase, respectively (PubMed:[2344612](#), PubMed:[2188730](#)). Lamin A and C are present in equal amounts in the lamina of mammals (PubMed:[10080180](#), PubMed:[10580070](#), PubMed:[10587585](#), PubMed:[10814726](#), PubMed:[11799477](#), PubMed:[12075506](#), PubMed:[12927431](#), PubMed:[15317753](#), PubMed:[18551513](#), PubMed:[18611980](#), PubMed:[22431096](#), PubMed:[23666920](#), PubMed:[31548606](#)). Also involved in DNA repair: recruited by DNA repair proteins XRCC4 and IFFO1 to the DNA double-strand breaks (DSBs) to prevent chromosome translocation by immobilizing broken DNA ends (PubMed:[31548606](#)). Required for normal development of peripheral nervous system and skeletal muscle and for muscle satellite cell proliferation (PubMed:[10080180](#), PubMed:[10814726](#), PubMed:[11799477](#), PubMed:[18551513](#), PubMed:[22431096](#)). Required for osteoblastogenesis and bone formation (PubMed:[12075506](#), PubMed:[15317753](#), PubMed:[18611980](#)). Also prevents fat infiltration of muscle and bone marrow, helping to maintain the volume and strength of skeletal muscle and bone (PubMed:[10587585](#)). Required for cardiac homeostasis (PubMed:[10580070](#), PubMed:[12927431](#), PubMed:[23666920](#), PubMed:[18611980](#)).

Cellular Location

Nucleus lamina. Nucleus envelope. Nucleus, nucleoplasm. Nucleus matrix. Note=Farnesylation of prelamin-A/C facilitates nuclear envelope targeting and subsequent cleavage by ZMPSTE24/FACE1 to remove the farnesyl group produces mature lamin-A/C, which can then be inserted into the nuclear lamina (PubMed:[15317753](#)) EMD is required for proper localization of non-farnesylated prelamin-A/C (PubMed:[19323649](#)). Also localizes to the micronuclear envelope in response to response to genome instability (PubMed:[37788673](#))

Tissue Location

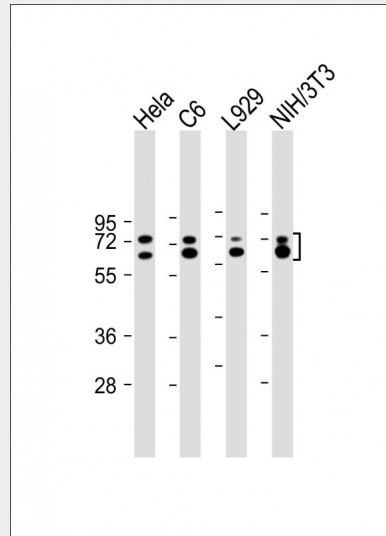
In the arteries, prelamin-A/C accumulation is not observed in young healthy vessels but is prevalent in medial vascular smooth muscle cells (VSMCs) from aged individuals and in atherosclerotic lesions, where it often colocalizes with senescent and degenerate VSMCs. Prelamin-A/C expression increases with age and disease. In normal aging, the accumulation of prelamin-A/C is caused in part by the down-regulation of ZMPSTE24/FACE1 in response to oxidative stress.

LMNA Antibody - Protocols

Provided below are standard protocols that you may find useful for product applications.

- [Western Blot](#)
- [Blocking Peptides](#)
- [Dot Blot](#)
- [Immunohistochemistry](#)
- [Immunofluorescence](#)
- [Immunoprecipitation](#)
- [Flow Cytometry](#)
- [Cell Culture](#)

LMNA Antibody - Images



All lanes : Anti-LMNA antibody at 1:4000 dilution Lane 1: HeLa whole cell lysate Lane 2: C6 whole cell lysate Lane 3: L929 whole cell lysate Lane 4: NIH/3T3 whole cell lysate Lysates/proteins at 20 µg per lane. Secondary Goat Anti-mouse IgG, (H+L), Peroxidase conjugated at 1/10000 dilution. Predicted band size : 74, 65 kDa Blocking/Dilution buffer: 5% NFDM/TBST.

LMNA Antibody - Background

Lamins are components of the nuclear lamina, a fibrous layer on the nucleoplasmic side of the inner nuclear membrane, which is thought to provide a framework for the nuclear envelope and may also interact with chromatin. Lamin A and C are present in equal amounts in the lamina of mammals. Plays an important role in nuclear assembly, chromatin organization, nuclear membrane and telomere dynamics. Required for normal development of peripheral nervous system and skeletal muscle and for muscle satellite cell proliferation. Required for osteoblastogenesis and bone formation. Also prevents fat infiltration of muscle and bone marrow, helping to maintain the volume and strength of skeletal muscle and bone.

LMNA Antibody - References

- McKeon F.D.,et al.Nature 319:463-468(1986).
- Fisher D.Z.,et al.Proc. Natl. Acad. Sci. U.S.A. 83:6450-6454(1986).
- Sylvius N.,et al.J. Med. Genet. 42:639-647(2005).
- Csoka A.B.,et al.Submitted (JUL-2003) to the EMBL/GenBank/DDBJ databases.
- Ota T.,et al.Nat. Genet. 36:40-45(2004).