

SNAP25 Antibody
Affinity purified rabbit polyclonal antibody
Catalog # AN1105**Specification**

SNAP25 Antibody - Product Information

Application	WB
Primary Accession	P60881
Reactivity	Rat
Predicted	Bovine, Chicken, Human, Mouse, Pig, Monkey, Zebrafish
Host	Rabbit
Clonality	polyclonal
Calculated MW	25 KDa

SNAP25 Antibody - Additional Information

Gene ID	25012
Gene Name	SNAP25
Other Names	
Synaptosomal-associated protein 25, SNAP-25, Super protein, SUP, Synaptosomal-associated 25 kDa protein, Snap25, Snap	

Target/Specificity

Synthetic peptide corresponding to amino acid residues from the C-terminal region conjugated to KLH.

Dilution

WB~~ 1:1000

Format

Prepared from rabbit serum by affinity purification via chromatography on an affinity column made with the C-terminal peptide used as antigen.

Antibody Specificity

Specific for the ~25k SNAP25 protein.

Storage

Maintain refrigerated at 2-8°C for up to 6 months. For long term storage store at -20°C in small aliquots to prevent freeze-thaw cycles.

Precautions

SNAP25 Antibody is for research use only and not for use in diagnostic or therapeutic procedures.

Shipping

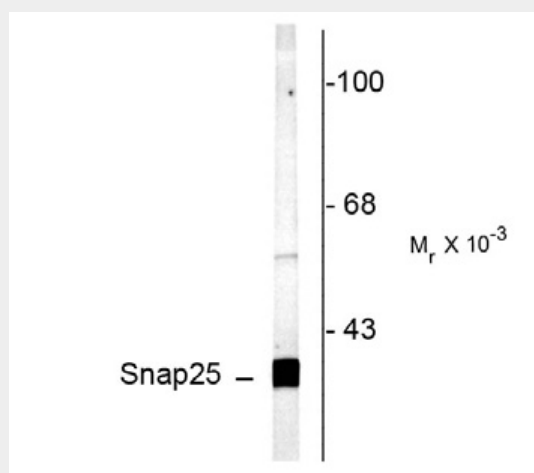
Blue Ice

SNAP25 Antibody - Protocols

Provided below are standard protocols that you may find useful for product applications.

- [Western Blot](#)
- [Blocking Peptides](#)
- [Dot Blot](#)
- [Immunohistochemistry](#)
- [Immunofluorescence](#)
- [Immunoprecipitation](#)
- [Flow Cytometry](#)
- [Cell Culture](#)

SNAP25 Antibody - Images



Western blot of rat cortex lysate showing specific labeling of the ~25k SNAP25 protein.

SNAP25 Antibody - Background

SNAP25 (Synaptosomal associated protein of 25 kDa) is a presynaptic plasma membrane protein that is widely distributed throughout the brain and involved in the regulation of neurotransmitter release. Decreased levels of SNAP25 have been found in the brains of patients with Down Syndrome and Alzheimer's Disease (Greber et al., 1999). In addition, a significant reduction in the hippocampal expression of SNAP25 has also been found in patients with Schizophrenia (Fatemi et al., 2001).

SNAP25 Antibody - References

Fatemi SH, Sidwell R, Kist D, Akhter P, Meltzer HY, Bailey K, Thuras P, Sedgwick J (1998) Differential expression of synaptosome-associated protein 25 kDa (Snap25) in hippocampi of neonatal mice following exposure to human influenza virus in utero. *Brain Res* 800(1):1-9.

Greber S, Cairns N, Lubec G, Fountoulakis M (1999) Decreased levels of the synaptosomal associated protein 25 in the brains of patients with Down Syndrome and Alzheimer's Disease. *Electrophoresis* 20 (4-5):928-34.

Ando K, Kudo Y, Takahashi M (2005) Negative regulation of neurotransmitter release by calpain: a possible specific involvement of Snap25 cleavage. *J Neurochem* 94(3):651-8.

Fatemi SH, Earle JA, Strydom JM, Lee S, Sedgwick J (2001) Altered levels of the synaptosomal associated protein Snap25 in hippocampus of patients with mood disorders and Schizophrenia. *Neuroreport*. 12(15): 3257-62.