

**CNP (2,3-cyclic nucleotide-3-phosphodiesterase) Antibody**  
**Rabbit polyclonal antibody**  
**Catalog # AN1140****Specification**

---

**CNP (2,3-cyclic nucleotide-3-phosphodiesterase) Antibody - Product Information**

Application	WB
Primary Accession	<a href="#">P13233</a>
Reactivity	Human, Mouse, Rabbit
Host	rabbit
Clonality	polyclonal
Calculated MW	46 KDa

**CNP (2,3-cyclic nucleotide-3-phosphodiesterase) Antibody - Additional Information**

Gene ID	25275
Gene Name	CNP
<b>Other Names</b>	
2', 3'-cyclic-nucleotide 3'-phosphodiesterase, CNP, CNPase, Cnp, Cnp1	

**Target/Specificity**

Endogenous rabbit 2,3 cyclic nucleotide-3-phospho-diesterase.

**Dilution**

WB~~ 1:1000

**Format**

Neat serum

**Antibody Specificity**

Specific for the ~ 46k CNP protein in Western blots

**Storage**

Maintain refrigerated at 2-8°C for up to 6 months. For long term storage store at -20°C in small aliquots to prevent freeze-thaw cycles.

**Precautions**

CNP (2,3-cyclic nucleotide-3-phosphodiesterase) Antibody is for research use only and not for use in diagnostic or therapeutic procedures.

**Shipping**

Blue Ice

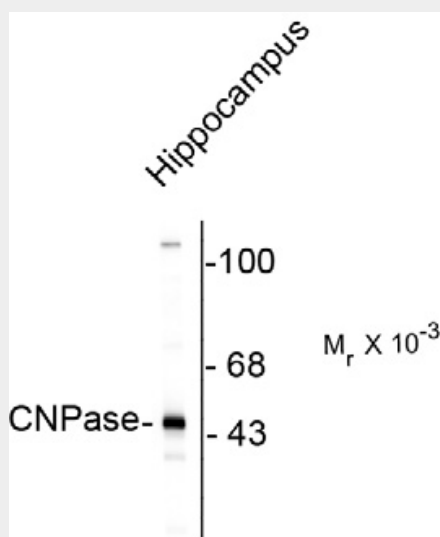
**CNP (2,3-cyclic nucleotide-3-phosphodiesterase) Antibody - Protocols**

Provided below are standard protocols that you may find useful for product applications.

- [Western Blot](#)

- [Blocking Peptides](#)
- [Dot Blot](#)
- [Immunohistochemistry](#)
- [Immunofluorescence](#)
- [Immunoprecipitation](#)
- [Flow Cytometry](#)
- [Cell Culture](#)

### **CNP (2,3-cyclic nucleotide-3-phosphodiesterase) Antibody - Images**



Western blot of rat brain lysate showing the specific immunolabeling of the ~ 46k CNP protein.

### **CNP (2,3-cyclic nucleotide-3-phosphodiesterase) Antibody - Background**

2,3-cyclic nucleotide-3-phosphodiesterase (CNP) is a membrane bound, microtubule associated protein that is among the most abundant myelin proteins of the CNS. It is thought that CNP may serve as a regulator of tubulin polymerization and of microtubule distribution (Bifulco et al., 2002). It was recently found that CNP may also function as a possible linker protein anchoring microtubules to the plasma membrane via a 13 residue C-terminal CNP fragment (Bifulco et al., 2002, Esposito et al., 2008).

### **CNP (2,3-cyclic nucleotide-3-phosphodiesterase) Antibody - References**

Bifulco et al. 2,3-Cyclic nucleotide 3-phosphodiesterase: a membrane bound, microtubule-associated protein and membrane anchor tubulin. PNAS 99:1807-12, 2002  
Esposito C, Scrima M, Carotenuto A, Tedeschi A, Rovero P, D'Ebifulco M, D'Errico G, Malfitano AM, D'Ursi AM (2008) Structures and micelle locations of the nonlipidated and lipidated C-terminal anchor of 2,3-Cyclic nucleotide 3-phosphodiesterase. Biochemistry 47(1): 308-319.