

**COBRA 1 Antibody**  
**Purified mouse monoclonal antibody**  
**Catalog # AN1191****Specification**

---

**COBRA 1 Antibody - Product Information**

Application	WB
Primary Accession	<a href="#">Q8WX92</a>
Reactivity	Human, Mouse, Rat
Host	Mouse
Clonality	monoclonal
Isotype	IgG1
Calculated MW	62 KDa

**COBRA 1 Antibody - Additional Information**

Gene ID	25920
Gene Name	COBRA1
<b>Other Names</b>	
Negative elongation factor B, NELF-B, Cofactor of BRCA1, NELFB, COBRA1, KIAA1182	

**Target/Specificity**

Recombinant full length human COBRA1 purified from E. coli .

**Dilution**

WB~~ 1:1000

**Format**

Protein G purified culture supernatant

**Antibody Specificity**

Specific for the ~62k COBRA1 protein in Western blots of neonatal rat brain lysate.

**Storage**

Maintain refrigerated at 2-8°C for up to 6 months. For long term storage store at -20°C in small aliquots to prevent freeze-thaw cycles.

**Precautions**

COBRA 1 Antibody is for research use only and not for use in diagnostic or therapeutic procedures.

**Shipping**

Blue Ice

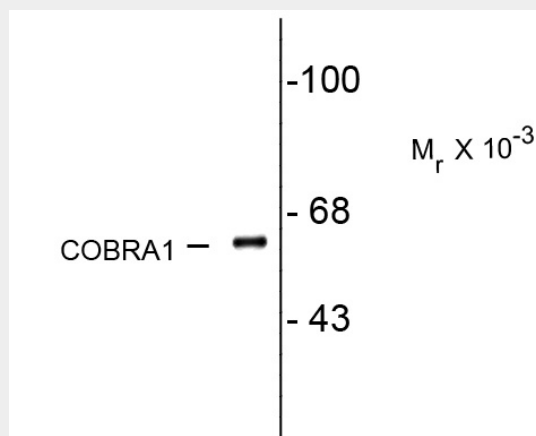
**COBRA 1 Antibody - Protocols**

Provided below are standard protocols that you may find useful for product applications.

- [Western Blot](#)

- [Blocking Peptides](#)
- [Dot Blot](#)
- [Immunohistochemistry](#)
- [Immunofluorescence](#)
- [Immunoprecipitation](#)
- [Flow Cytometry](#)
- [Cell Culture](#)

### COBRA 1 Antibody - Images



Western blot of neonatal rat brain lysate showing specific immunolabeling of the ~ 62K COBRA1 protein.

### COBRA 1 Antibody - Background

COBRA1 (cofactor of BRCA1) also known as NELF-B, is an essential component of the negative elongation factor (NELF) complex. COBRA1 has been shown to directly bind estrogen receptor alpha (ER $\alpha$ ) and repress ER $\alpha$ -mediated transcription (Aiyar SE et al., 2004). COBRA1 has also been demonstrated to interact with c-Jun and c-Fos suggesting a role in modulation of the AP-1 pathway and therefore may be important in cell proliferation, differentiation, apoptosis and oncogenesis (Zhong H et al., 2004)

### COBRA 1 Antibody - References

Aiyar, SE, Sun J, Blair AL, Moskaluk CA, Lu Y, Ye Q, Yamaguchi Y, Mukherjee A, Ren D, Handa H, Li R (2004). Attenuation of estrogen receptor alpha-mediated transcription through estrogen-stimulated recruitment of a negative elongation factor. *Genes Dev.* 18 (17): 2134-46.  
Zhong, H, Zhu J, Zhang H, Ding L, Sun Y, Huang C, Ye Qi (2004). COBRA1 inhibits AP-1 transcriptional activity in transfected cells. *Biochem. Biophys. Res. Commun.* 325 (2): 568-73.