

**MCP-1 Antibody**  
**Purified Mouse Monoclonal Antibody**  
**Catalog # AO1014a****Specification**

---

**MCP-1 Antibody - Product Information**

Application	<b>WB</b>
Primary Accession	<a href="#">P13500</a>
Reactivity	<b>Human</b>
Host	<b>Mouse</b>
Clonality	<b>Monoclonal</b>
Isotype	<b>IgG1.kappa</b>

**Description**

Monocyte chemoattractant protein-1 (MCP-1) is a member of the chemokine-beta family of cytokines. The protein is structurally related to the CXC subfamily of cytokines. Members of this subfamily are characterized by two cysteines separated by a single amino acid. This cytokine displays chemotactic activity for monocytes and basophils but not for neutrophils or eosinophils. It has been implicated in the pathogenesis of diseases characterized by monocytic infiltrates, like psoriasis, rheumatoid arthritis and atherosclerosis. It binds to chemokine receptors CCR2 and CCR4. It may play a inportant role in the initiation and/or progression of pulmonary hypertension (PH). Blockade of a systemic MCP-1 signal pathway in vivo may prevent PH.

**Immunogen**

Purified recombinant fragment of human MCP-1 expressed in E. Coli.

**Formulation**

Purified antibody in PBS containing 0.03% sodium azide.

**MCP-1 Antibody - Additional Information**

**Gene ID** 6347

**Other Names**

C-C motif chemokine 2, HC11, Monocyte chemoattractant protein 1, Monocyte chemotactic and activating factor, MCAF, Monocyte chemotactic protein 1, MCP-1, Monocyte secretory protein JE, Small-inducible cytokine A2, CCL2, MCP1, SCYA2

**Dilution**

WB~~1/500 - 1/2000

**Storage**

Maintain refrigerated at 2-8°C for up to 6 months. For long term storage store at -20°C in small aliquots to prevent freeze-thaw cycles.

**Precautions**

MCP-1 Antibody is for research use only and not for use in diagnostic or therapeutic procedures.

**MCP-1 Antibody - Protein Information**

**Name** CCL2

**Synonyms** MCP1, SCYA2

**Function**

Acts as a ligand for C-C chemokine receptor CCR2 (PubMed:<a href="http://www.uniprot.org/citations/9837883" target="\_blank">9837883</a>, PubMed:<a href="http://www.uniprot.org/citations/10587439" target="\_blank">10587439</a>, PubMed:<a href="http://www.uniprot.org/citations/10529171" target="\_blank">10529171</a>). Signals through binding and activation of CCR2 and induces a strong chemotactic response and mobilization of intracellular calcium ions (PubMed:<a href="http://www.uniprot.org/citations/9837883" target="\_blank">9837883</a>, PubMed:<a href="http://www.uniprot.org/citations/10587439" target="\_blank">10587439</a>). Exhibits a chemotactic activity for monocytes and basophils but not neutrophils or eosinophils (PubMed:<a href="http://www.uniprot.org/citations/8627182" target="\_blank">8627182</a>, PubMed:<a href="http://www.uniprot.org/citations/9792674" target="\_blank">9792674</a>, PubMed:<a href="http://www.uniprot.org/citations/8195247" target="\_blank">8195247</a>). May be involved in the recruitment of monocytes into the arterial wall during the disease process of atherosclerosis (PubMed:<a href="http://www.uniprot.org/citations/8107690" target="\_blank">8107690</a>).

**Cellular Location**

Secreted

**Tissue Location**

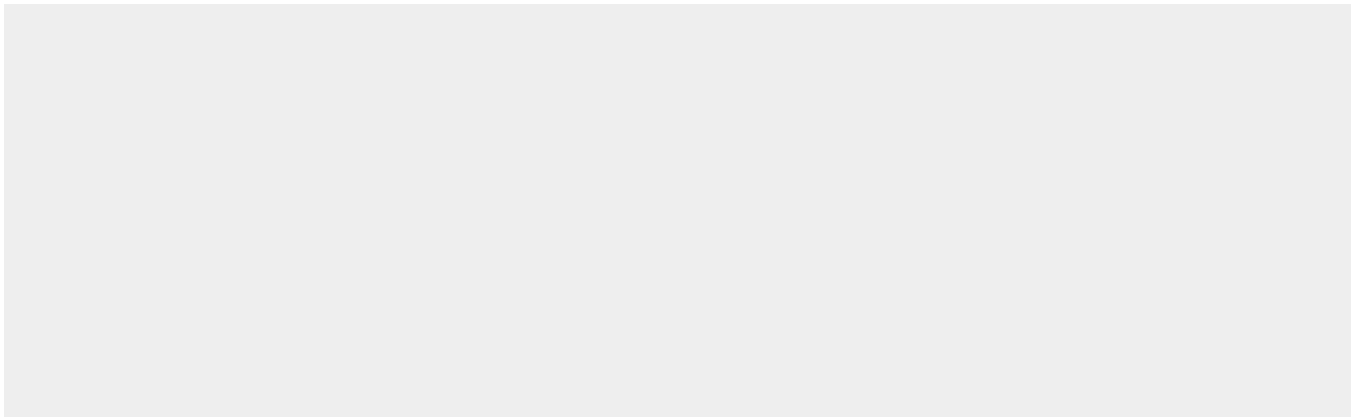
Expressed in the seminal plasma, endometrial fluid and follicular fluid (at protein level) (PubMed:23765988). Expressed in monocytes (PubMed:2513477).

**MCP-1 Antibody - Protocols**

Provided below are standard protocols that you may find useful for product applications.

- [Western Blot](#)
- [Blocking Peptides](#)
- [Dot Blot](#)
- [Immunohistochemistry](#)
- [Immunofluorescence](#)
- [Immunoprecipitation](#)
- [Flow Cytometry](#)
- [Cell Culture](#)

**MCP-1 Antibody - Images**



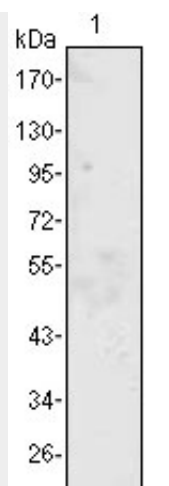


Figure 1: Western blot analysis using MCP1 mouse mAb against truncated MCP-1 recombinant protein.

#### **MCP-1 Antibody - References**

1. Yoshimura T. et al. 1989. FEBS Lett. 244:487-493. 2. Yoshimura T. et al. 1991. Adv. Exp. Med. Biol. 305:47-56. 3. Rollins B.J. et al. 1991. Genomics. 10:489-492.