

Calcyclin Antibody
Purified Mouse Monoclonal Antibody
Catalog # AO1044a**Specification**

Calcyclin Antibody - Product Information

Application	WB, IHC
Primary Accession	O9HB71
Reactivity	Human
Host	Mouse
Clonality	Monoclonal
Isotype	IgG1

Description

Calcyclin encoded by this gene is a member of the S100 family of proteins containing 2 EF-hand calcium-binding motifs. S100 proteins are localized in the cytoplasm and/or nucleus of a wide range of cells, and involved in the regulation of a number of cellular processes such as cell cycle progression and differentiation. S100 genes include at least 13 members which are located as a cluster on chromosome 1q21. This protein may function in stimulation of Ca²⁺-dependent insulin release, stimulation of prolactin secretion, and exocytosis. Chromosomal rearrangements and altered expression of this gene have been implicated in melanoma.

Immunogen

Purified recombinant fragment of calcyclin expressed in E. Coli.

Formulation

Purified antibody in PBS containing 0.03% sodium azide.

Calcyclin Antibody - Additional Information

Gene ID 27101

Other Names

Calcyclin-binding protein, CacyBP, hCacyBP, S100A6-binding protein, Siah-interacting protein, CACYBP, S100A6BP, SIP

Dilution

WB~~1/500 - 1/2000

IHC~~1/200 - 1/1000

Storage

Maintain refrigerated at 2-8°C for up to 6 months. For long term storage store at -20°C in small aliquots to prevent freeze-thaw cycles.

Precautions

Calcyclin Antibody is for research use only and not for use in diagnostic or therapeutic procedures.

Calcyclin Antibody - Protein Information

Name CACYBP

Synonyms S100A6BP, SIP

Function

May be involved in calcium-dependent ubiquitination and subsequent proteasomal degradation of target proteins. Probably serves as a molecular bridge in ubiquitin E3 complexes. Participates in the ubiquitin-mediated degradation of beta-catenin (CTNNB1).

Cellular Location

Nucleus. Cytoplasm. Note=Cytoplasmic at low calcium concentrations. In neuroblastoma cells, after a retinoic acid (RA) induction and calcium increase, it localizes in both the nucleus and cytoplasm. The nuclear fraction may be phosphorylated

Calcyclin Antibody - Protocols

Provided below are standard protocols that you may find useful for product applications.

- [Western Blot](#)
- [Blocking Peptides](#)
- [Dot Blot](#)
- [Immunohistochemistry](#)
- [Immunofluorescence](#)
- [Immunoprecipitation](#)
- [Flow Cytometry](#)
- [Cell Culture](#)

Calcyclin Antibody - Images

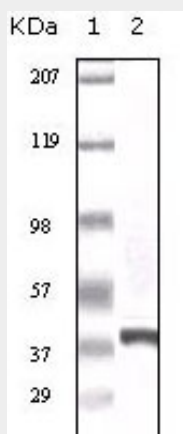


Figure 1: Western blot analysis using calyculin mouse mAb against truncated calyculin recombinate protein.

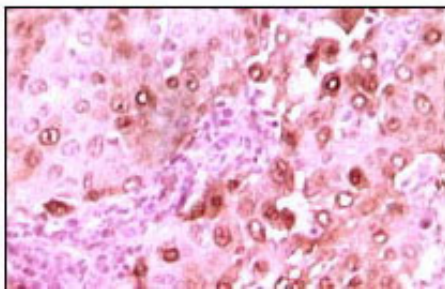


Figure 2: Immunohistochemical analysis of paraffin-embedded human brain glioma tissue showing nuclear localization using calcyclin mouse mAb with DAB staining.

Calcyclin Antibody - References

1. Bean C.et.al J Mol Biol. 2005 Jun 3;349(2):349-66.
2. HWang R.et.al J Biol Chem. 2004 May 14;279(20):21239-47.