

SNCG (breast cancer-specific protein 1) Antibody
Purified Mouse Monoclonal Antibody
Catalog # AO1065a**Specification**

SNCG (breast cancer-specific protein 1) Antibody - Product Information

Application	WB, IHC
Primary Accession	O76070
Reactivity	Human
Host	Mouse
Clonality	Monoclonal
Isotype	IgG1

Description

SNCG(also designated gamma-synuclein or breast cancer-specific protein 1),with 127-amino acid protein(about 14kDa), belongs to the synuclein family, which also includes alpha- and beta-synuclein.Three synucleins are located in the neuronal cytosol and enriched in presynaptic terminals,while SNCG is also expressed in many other non-neuronal tissues. SNCG is abnormally expressed in a high percentage of tumor tissues of diversified cancer types, including liver, esophagus, colon, gastric, lung, prostate, cervical, and breast cancer, but rarely expressed in tumor-matched nonneoplastic adjacent tissues. High levels of SNCG have been identified in advanced breast carcinomas suggesting a correlation between overexpression of SNCG and breast tumor development.

Immunogen

Purified recombinant fragment of SNCG expressed in E. Coli.

Formulation

Purified antibody in PBS containing 0.03% sodium azide.

SNCG (breast cancer-specific protein 1) Antibody - Additional Information

Gene ID 6623

Other Names

Gamma-synuclein, Breast cancer-specific gene 1 protein, Persyn, Synoretin, SR, SNCG, BCSG1, PERSYN, PRSN

Dilution

WB~~1/500 - 1/2000

IHC~~1/200 - 1/1000

Storage

Maintain refrigerated at 2-8°C for up to 6 months. For long term storage store at -20°C in small aliquots to prevent freeze-thaw cycles.

Precautions

SNCG (breast cancer-specific protein 1) Antibody is for research use only and not for use in diagnostic or therapeutic procedures.

SNCG (breast cancer-specific protein 1) Antibody - Protein Information

Name SNCG

Synonyms BCSG1, PERSYN, PRSN

Function

Plays a role in neurofilament network integrity. May be involved in modulating axonal architecture during development and in the adult. In vitro, increases the susceptibility of neurofilament-H to calcium-dependent proteases (By similarity). May also function in modulating the keratin network in skin. Activates the MAPK and Elk-1 signal transduction pathway (By similarity).

Cellular Location

Cytoplasm, perinuclear region. Cytoplasm, cytoskeleton, microtubule organizing center, centrosome. Cytoplasm, cytoskeleton, spindle. Note=Associated with centrosomes in several interphase cells. In mitotic cells, localized to the poles of the spindle

Tissue Location

Highly expressed in brain, particularly in the substantia nigra. Also expressed in the corpus callosum, heart, skeletal muscle, ovary, testis, colon and spleen. Weak expression in pancreas, kidney and lung

SNCG (breast cancer-specific protein 1) Antibody - Protocols

Provided below are standard protocols that you may find useful for product applications.

- [Western Blot](#)
- [Blocking Peptides](#)
- [Dot Blot](#)
- [Immunohistochemistry](#)
- [Immunofluorescence](#)
- [Immunoprecipitation](#)
- [Flow Cytometry](#)
- [Cell Culture](#)

SNCG (breast cancer-specific protein 1) Antibody - Images

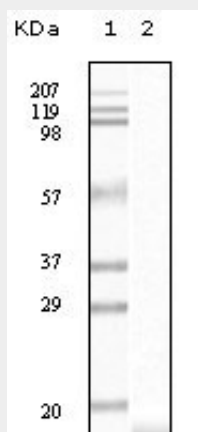


Figure 1: Western blot analysis using SNCG mouse mAb against truncated SNCG recombinant

protein.

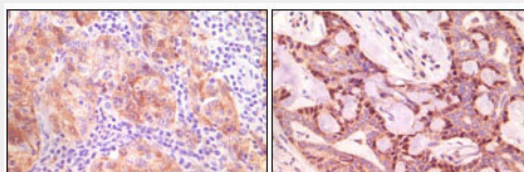


Figure 2: Immunohistochemical analysis of paraffin-embedded human ovary carcinoma (left) and breast carcinoma (right), showing cytoplasmic(ovary carcinoma) localization, cytoplasmic and nuclear (breast carcinoma) localization using SNCG mouse mAb with DAB staining.

SNCG (breast cancer-specific protein 1) Antibody - References

1. Haiyan Liu, Wei Liu, Yinwei Wu. Cancer Res. 2005 Sep 1;65(17):7635-43. 2. Irina Surgucheva , Belinda McMahon , Andrei Surguchov. Cell Motil Cytoskeleton. 2006 May 26.