

ApoM Antibody
Purified Mouse Monoclonal Antibody
Catalog # AO1091a**Specification**

ApoM Antibody - Product Information

Application	WB, IF
Primary Accession	O95445
Reactivity	Human
Host	Mouse
Clonality	Monoclonal
Isotype	IgG2a
Calculated MW	21kDa KDa

Description

ApoM (apolipoprotein M, also designated G3a or NG20), with 188-amino acid protein (about 21kDa), is an apolipoprotein and member of the lipocalin protein family. The Apo-proteins are involved in the specific binding of cellular receptors, the regulation of lipolytic enzymes, and the process of lipid exchange. The encoded protein is secreted through the plasma membrane but remains membrane-bound, where it is involved in lipid transport. The N-terminal region of Apo-M contains hydrophobic residues that may promote association with the phospholipid layer of lipoprotein particles. In vitro, Apo-M is glycosylated when translated in the presence of microsomes, and remains associated with the microsomes after carbonate treatment. Apo-M is expressed in liver and kidney, and is secreted into the bloodstream in HDLs, and also found in triglyceride-rich lipoproteins and LDLs.

Immunogen

Purified recombinant fragment of ApoM expressed in E. Coli.

Formulation

Purified antibody in PBS containing 0.03% sodium azide.

ApoM Antibody - Additional Information

Gene ID 55937

Other Names

Apolipoprotein M, Apo-M, ApoM, Protein G3a, APOM, G3A, NG20

Dilution

WB~~1/500 - 1/2000

IF~~1/200 - 1/1000

Storage

Maintain refrigerated at 2-8°C for up to 6 months. For long term storage store at -20°C in small aliquots to prevent freeze-thaw cycles.

Precautions

ApoM Antibody is for research use only and not for use in diagnostic or therapeutic procedures.

ApoM Antibody - Protein Information

Name APOM

Synonyms G3A, NG20

Function

Probably involved in lipid transport. Can bind sphingosine-1- phosphate, myristic acid, palmitic acid and stearic acid, retinol, all- trans-retinoic acid and 9-cis-retinoic acid.

Cellular Location

Secreted. Note=Present in high density lipoprotein (HDL) and to a lesser extent in triglyceride-rich lipoproteins (TGRLP) and low density lipoproteins (LDL)

Tissue Location

Plasma protein. Expressed in liver and kidney.

ApoM Antibody - Protocols

Provided below are standard protocols that you may find useful for product applications.

- [Western Blot](#)
- [Blocking Peptides](#)
- [Dot Blot](#)
- [Immunohistochemistry](#)
- [Immunofluorescence](#)
- [Immunoprecipitation](#)
- [Flow Cytometry](#)
- [Cell Culture](#)

ApoM Antibody - Images

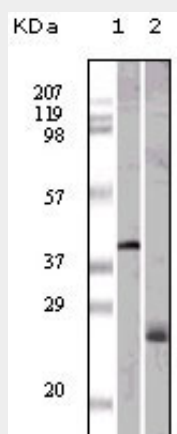


Figure 1: Western blot analysis using ApoM mouse mAb against GST-ApoM recombinant protein (1) and human serum (2).

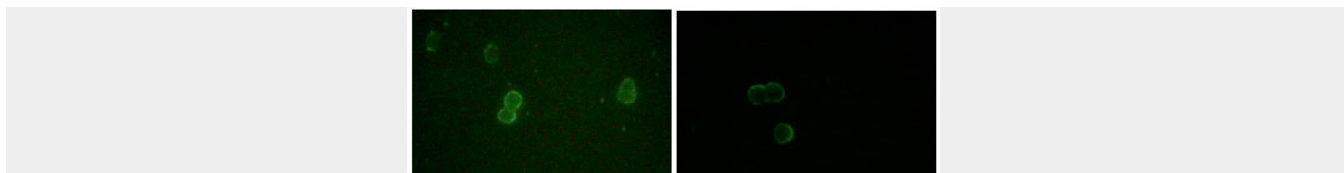


Figure 2: Immunofluorescence analysis of methanol-fixed L-02 (left) and Cos7 (right) cells using ApoM mouse mAb showing cytoplasmic and membrane localization.

ApoM Antibody - References

1. Xu,N. & Dahlback,B.1999. J. Biol. Chem. 274 (44):31286-31290.
2. Christian Wolfrum, Matthew N Poy & Markus Stoffel. 2005. Nat Med. 11(4):418-22.
3. Xu,N., Nilsson-Ehle,P. & Ahren,B. 2004. J. Nutr. Biochem. 15 (10):579-582.
4. Zhang,X.Y. ,et al.2004. Acta Histochem. 106 (2):123-128.