

**GFP Antibody**  
**Purified Mouse Monoclonal Antibody**  
**Catalog # AO1117a****Specification**

---

**GFP Antibody - Product Information**

Application	WB, IHC, FC
Host	Mouse
Clonality	Monoclonal
Isotype	IgG2a
Calculated MW	27kDa KDa

**Description**

GFP (Green fluorescence protein) is a 27 kDa protein derived from the jellyfish *Aequorea victoria*, which emits green light when excited by blue light. GFP cDNA produces a fluorescent product when expressed in prokaryotic cells, without the need for exogenous substrates or cofactors. GFP has become an invaluable tool in cell biology research, since its intrinsic fluorescence can be visualized in living cells. GFP fluorescence is stable under fixation conditions and suitable for a variety of applications. GFP has been widely used as a reporter for gene expression, enabling researchers to visualize and localize GFP-tagged proteins within living cells without the need for chemical staining. Other applications of GFP include assessment of protein protein interactions through the yeast two hybrid system and measurement of distance between proteins through fluorescence energy transfer (FRET) protocols. GFP technology has considerably contributed to a greater understanding of cellular physiology.

**Immunogen**

Purified recombinant fragment of GFP expressed in E. Coli.

**Formulation**

Purified antibody in PBS containing 0.03% sodium azide.

**GFP Antibody - Additional Information****Dilution**

WB~~1/500 - 1/2000

IHC~~1/500 - 1/2000

FC~~1/200 - 1/400

**Storage**

Maintain refrigerated at 2-8°C for up to 6 months. For long term storage store at -20°C in small aliquots to prevent freeze-thaw cycles.

**Precautions**

GFP Antibody is for research use only and not for use in diagnostic or therapeutic procedures.

**GFP Antibody - Protein Information**

## GFP Antibody - Protocols

Provided below are standard protocols that you may find useful for product applications.

- [Western Blot](#)
- [Blocking Peptides](#)
- [Dot Blot](#)
- [Immunohistochemistry](#)
- [Immunofluorescence](#)
- [Immunoprecipitation](#)
- [Flow Cytometry](#)
- [Cell Culture](#)

## GFP Antibody - Images

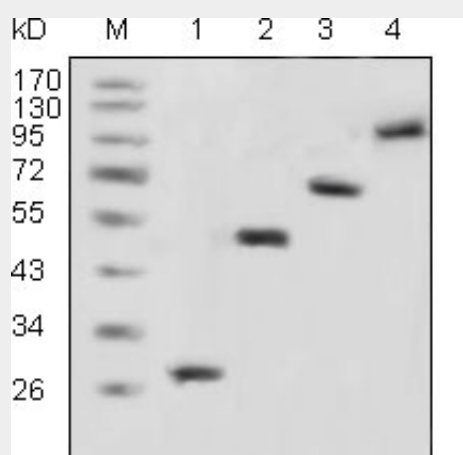


Figure 1: Western blot analysis using GFP mouse mAb against recombinant GFP fusion protein (1) and various recombinant fusion protein with GFP tag (2, 3, 4).

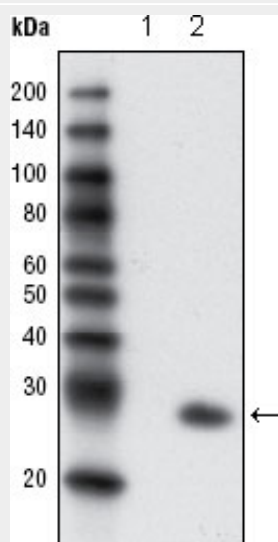


Figure 2: Western blot analysis using GFP mouse mAb against extracts from HCC827 cells, untransfected (1) and transfected with GFP(2).

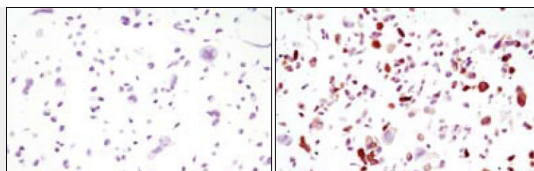


Figure 3: Immunocytochemistry analysis of HCC827 cells, untransfected (left) or transfected with GFP (right) using GFP mouse mAb .

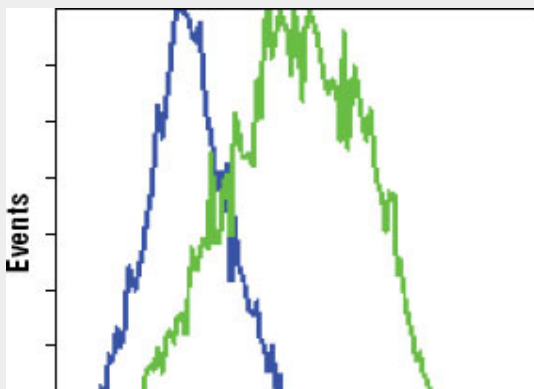


Figure 4: Flow cytometric analysis of HCC827 cells, untransfected (blue) or transfected with GFP (green), using GFP mouse mAb .

#### **GFP Antibody - References**

1. Proc Natl Acad Sci U S A. 2006, Jul 25,103(30):11399-404. 2. Gene Expr Patterns. 2007, Jan,7(1-2):124-30. 3. Eur J Cell Biol. 2006, Sep,85(9-10):1059-68.