

**IGFBP2 Antibody**  
**Purified Mouse Monoclonal Antibody**  
**Catalog # AO1169a****Specification**

---

**IGFBP2 Antibody - Product Information**

Application	WB, IHC, ICC, IF
Primary Accession	<a href="#">P18065</a>
Reactivity	Human
Host	Mouse
Clonality	Monoclonal
Isotype	IgG1

**Description**

IGFBP2: insulin-like growth factor binding protein 2. IGFBP2 is a member of the ISGBP family which bind various IGFs. IGFBP2 is overexpressed in a wide spectrum of other cancers, including glioma, prostate cancer, synovial sarcoma, neuroblastoma, colon cancer, adrenocortical cancer, lung cancer, Wilms' tumor, and hepatoblastoma. The overexpression of IGFBP2 also correlates with the aggressiveness of some tumors. IGFBP2 activates the expression of matrix metalloprotease 2, which contributes to cell invasiveness.

**Immunogen**

Purified recombinant fragment of protein IGFBP2 (aa180-328) expressed in E. Coli. <br />

**Formulation**

Ascitic fluid containing 0.03% sodium azide.

**IGFBP2 Antibody - Additional Information**

**Gene ID** 3485

**Other Names**

Insulin-like growth factor-binding protein 2, IBP-2, IGF-binding protein 2, IGFBP-2, IGFBP2, BP2, IBP2

**Dilution**

WB~~1/500 - 1/2000  
IHC~~1/200 - 1/1000  
ICC~~1:200~~1000  
IF~~1:200~1000.

**Storage**

Maintain refrigerated at 2-8°C for up to 6 months. For long term storage store at -20°C in small aliquots to prevent freeze-thaw cycles.

**Precautions**

IGFBP2 Antibody is for research use only and not for use in diagnostic or therapeutic procedures.

**IGFBP2 Antibody - Protein Information**

**Name** IGFBP2

**Synonyms** BP2, IBP2

**Function**

Inhibits IGF-mediated growth and developmental rates. IGF- binding proteins prolong the half-life of the IGFs and have been shown to either inhibit or stimulate the growth promoting effects of the IGFs on cell culture. They alter the interaction of IGFs with their cell surface receptors.

**Cellular Location**

Secreted.

**IGFBP2 Antibody - Protocols**

Provided below are standard protocols that you may find useful for product applications.

- [Western Blot](#)
- [Blocking Peptides](#)
- [Dot Blot](#)
- [Immunohistochemistry](#)
- [Immunofluorescence](#)
- [Immunoprecipitation](#)

- [Flow Cytometry](#)

- [Cell Culture](#)

**IGFBP2 Antibody - Images**

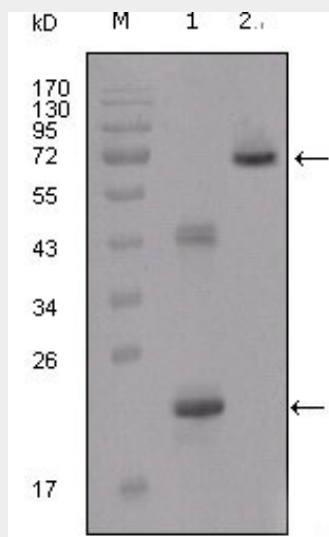


Figure 1: Western blot analysis using IGFBP2 mouse mAb against truncated IGFBP2-His recombinant protein (1) and truncated IGFBP2 (aa40-328)-hlgGfc transfected CHO-K1 cell lysate (2).

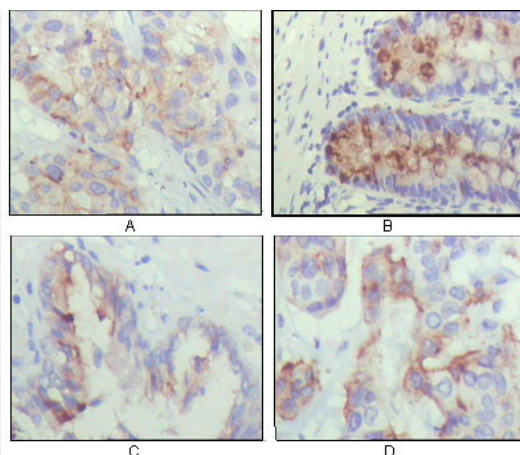


Figure 2: Immunohistochemical analysis of paraffin-embedded human lung cancer (A), rectum(B), prostate (C), colon cancer (D) showing cytoplasmic localization using IGFBP2 mouse mAb with DAB staining.

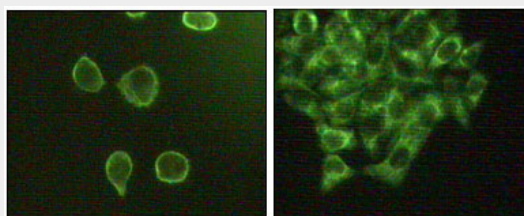


Figure 2: Immunofluorescence staining of methanol-fixed A431 (left) and Hela (right) cells showing cytoplasmic and membrane localization.

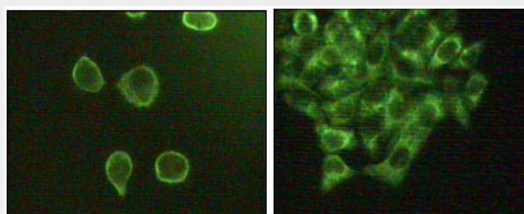


Figure 2: Immunofluorescence staining of methanol-fixed A431(left) and Hela(right) cells showing cytoplasmic and membrane localization.

#### IGFBP2 Antibody - References

1. Oncol Rep. 2005 Feb;13(2):341-5. 2. Prostate. 2005 Jun 15;64(1):9-19. 3. Bone. 2005 Dec;37(6):741-50.