

Cytokeratin 19 Antibody
Purified Mouse Monoclonal Antibody
Catalog # AO1246a**Specification**

Cytokeratin 19 Antibody - Product Information

Application	WB
Primary Accession	P08727
Reactivity	Human
Host	Mouse
Clonality	Monoclonal
Isotype	IgG1
Calculated MW	44kDa KDa

Description

Cytokeratin 19, also known as KRT19, CK19, CK19, K1CS, MGC15366. Entrez Protein NP_002267. It is a member of the keratin family. The keratins are intermediate filament proteins responsible for the structural integrity of epithelial cells and are subdivided into cytokeratins and hair keratins. The type I cytokeratins consist of acidic proteins which are arranged in pairs of heterotypic keratin chains. Unlike its related family members, this smallest known acidic cytokeratin is not paired with a basic cytokeratin in epithelial cells. It is specifically expressed in the periderm, the transiently superficial layer that envelopes the developing epidermis.

Immunogen

Purified recombinant fragment of Cytokeratin 19 (aa80-400) expressed in E. Coli strain.

Formulation

Ascitic fluid containing 0.03% sodium azide.

Cytokeratin 19 Antibody - Additional Information

Gene ID 3880

Other Names

Keratin, type I cytoskeletal 19, Cytokeratin-19, CK-19, Keratin-19, K19, KRT19

Dilution

WB~~1/500 - 1/2000

Storage

Maintain refrigerated at 2-8°C for up to 6 months. For long term storage store at -20°C in small aliquots to prevent freeze-thaw cycles.

Precautions

Cytokeratin 19 Antibody is for research use only and not for use in diagnostic or therapeutic procedures.

Cytokeratin 19 Antibody - Protein Information

Name KRT19

Function

Involved in the organization of myofibers. Together with KRT8, helps to link the contractile apparatus to dystrophin at the costameres of striated muscle.

Tissue Location

Expressed in a defined zone of basal keratinocytes in the deep outer root sheath of hair follicles. Also observed in sweat gland and mammary gland ductal and secretory cells, bile ducts, gastrointestinal tract, bladder urothelium, oral epithelia, esophagus, ectocervical epithelium (at protein level). Expressed in epidermal basal cells, in nipple epidermis and a defined region of the hair follicle. Also seen in a subset of vascular wall cells in both the veins and artery of human umbilical cord, and in umbilical cord vascular smooth muscle. Observed in muscle fibers accumulating in the costameres of myoplasm at the sarcolemma in structures that contain dystrophin and spectrin.

Cytokeratin 19 Antibody - Protocols

Provided below are standard protocols that you may find useful for product applications.

- [Western Blot](#)
- [Blocking Peptides](#)
- [Dot Blot](#)
- [Immunohistochemistry](#)
- [Immunofluorescence](#)
- [Immunoprecipitation](#)
- [Flow Cytometry](#)
- [Cell Culture](#)

Cytokeratin 19 Antibody - Images

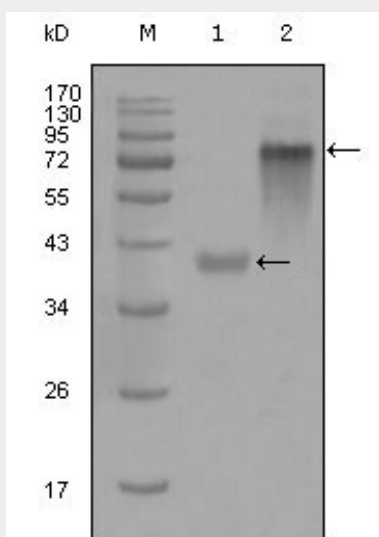


Figure 1: Western blot analysis using KRT19 mouse mAb against truncated KRT19-His recombinant protein (1) and full-length KRT19(aa1-400)-hlgGFc transfected CHO-K1 cell lysate(2).

Cytokeratin 19 Antibody - References

1. Lung Cancer. 2007 Dec;58(3):369-75.
2. Endocr Pract. 2008 Mar;14(2):168-74.