

CHIT1 Antibody
Purified Mouse Monoclonal Antibody
Catalog # AO1251a**Specification**

CHIT1 Antibody - Product Information

Application	WB
Primary Accession	O13231
Reactivity	Human
Host	Mouse
Clonality	Monoclonal
Isotype	IgG1

Description

CHIT1:chitinase 1 (chitotriosidase). Chitotriosidase is a 50 kDa secreted glycoprotein that belongs to glycohydrolase family # 18. It is secreted by activated human macrophages and is markedly elevated in plasma of Gaucher disease patients. The expression of chitotriosidase occurs only at a late stage of differentiation of monocytes to activated macrophages in culture. Human macrophages can synthesize a functional chitotriosidase, a highly conserved enzyme with a strongly regulated expression. This enzyme may play a role in the degradation of chitin-containing pathogens.

Immunogen

Purified recombinant fragment of CHIT1 (aa22-137) expressed in E. Coli.

Formulation

Ascitic fluid containing 0.03% sodium azide.

CHIT1 Antibody - Additional Information

Gene ID 1118

Other Names

Chitotriosidase-1, 3.2.1.14, Chitinase-1, CHIT1

Dilution

WB~~1/500 - 1/2000

Storage

Maintain refrigerated at 2-8°C for up to 6 months. For long term storage store at -20°C in small aliquots to prevent freeze-thaw cycles.

Precautions

CHIT1 Antibody is for research use only and not for use in diagnostic or therapeutic procedures.

CHIT1 Antibody - Protein Information

Name CHIT1

Function

Degrades chitin, chitotriose and chitobiose. May participate in the defense against nematodes and other pathogens. Isoform 3 has no enzymatic activity.

Cellular Location

Secreted. Lysosome. Note=A small proportion is lysosomal

Tissue Location

Detected in spleen. Secreted by cultured macrophages.

CHIT1 Antibody - Protocols

Provided below are standard protocols that you may find useful for product applications.

- [Western Blot](#)
- [Blocking Peptides](#)
- [Dot Blot](#)
- [Immunohistochemistry](#)
- [Immunofluorescence](#)
- [Immunoprecipitation](#)
- [Flow Cytometry](#)
- [Cell Culture](#)

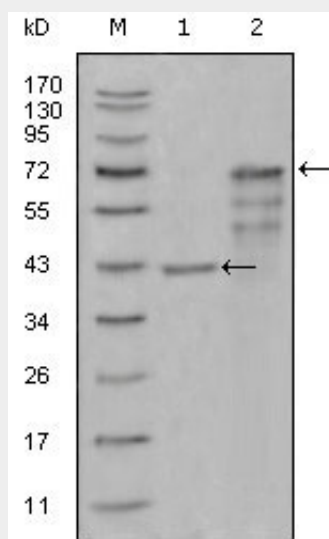
CHIT1 Antibody - Images

Figure 1: Western blot analysis using CHIT1 mouse mAb against truncated Trx-CHIT1 recombinant protein (1) and truncated CHIT1 (aa22-466)-hlgGfC transfected CHO-K1 cell lysate (2).

CHIT1 Antibody - References

1. Sarcoidosis Vasc Diffuse Lung Dis. 2007 Mar;24(1):59-64.
2. Clin Biochem. 2007 Mar;40(5-6):365-9.