

**KLF15 Antibody**  
**Purified Mouse Monoclonal Antibody**  
**Catalog # AO1260a****Specification**

---

**KLF15 Antibody - Product Information**

Application	WB, ICC, IF
Reactivity	Human
Host	Mouse
Clonality	Monoclonal
Isotype	IgG1
Calculated MW	44kDa KDa

**Description**

KLF15 (Kruppel-like factor 15), also known as KKLf, DKFZp779M1320. Entrez Protein NP\_054798. Sequence analysis predicted that the 416 amino acid KLF15 protein, which is 84% identical to the rat Klf15 protein, contains 3 zinc finger motifs at its C terminus, N-terminal serine-rich stretches, and a central proline-rich segment. KLF15, a kidney-enriched Krueppel-like factor, is a transcriptional activator that binds the CLCNKA promoter. KLF15, which is a nuclear protein, is expressed primarily in liver, heart, skeletal muscle and kidney tissues but is not detected in lymphoid tissues or bone marrow. KLF15 is an important regulator of GLUT4 in both adipose and muscle tissues.

**Immunogen**

Purified recombinant fragment of human KLF15 expressed in E. Coli.

**Formulation**

Ascitic fluid containing 0.03% sodium azide. <br />

**KLF15 Antibody - Additional Information****Dilution**

WB~~1/500 - 1/2000

ICC~~1:200~~1000

IF~~1:200~1000.

**Storage**

Maintain refrigerated at 2-8°C for up to 6 months. For long term storage store at -20°C in small aliquots to prevent freeze-thaw cycles.

**Precautions**

KLF15 Antibody is for research use only and not for use in diagnostic or therapeutic procedures.

**KLF15 Antibody - Protein Information****KLF15 Antibody - Protocols**

Provided below are standard protocols that you may find useful for product applications.

- [Western Blot](#)
- [Blocking Peptides](#)
- [Dot Blot](#)
- [Immunohistochemistry](#)
- [Immunofluorescence](#)
- [Immunoprecipitation](#)
- [Flow Cytometry](#)
- [Cell Culture](#)

#### KLF15 Antibody - Images

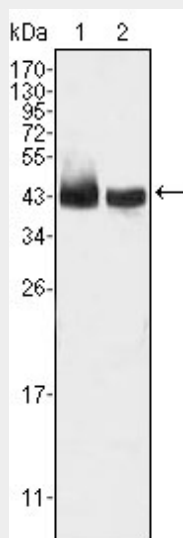


Figure 1: Western blot analysis using KLF15 mouse mAb against HepG2 (1) and SMMC-7721 (2) cell lysate.

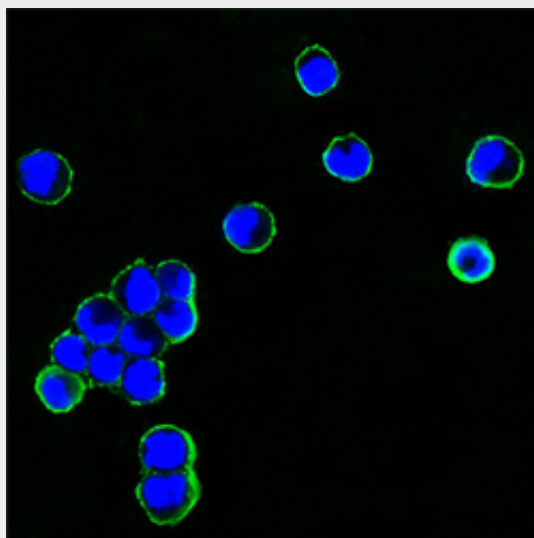


Figure 2: Confocal immunofluorescence analysis of HEK293 cells transfected with recombinant plasmid with human IgG Fc tag using human IgG Fc mouse mAb (green). Blue: DRAQ5 fluorescent DNA dye.

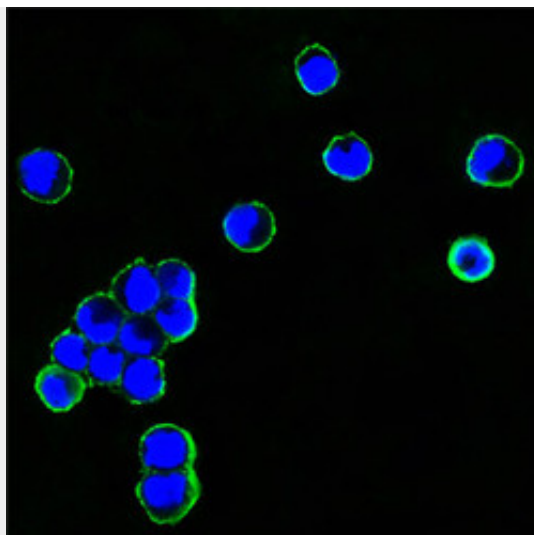


Figure 2: Confocal immunofluorescence analysis of HEK293 cells transfected with recombinant plasmid with human IgG Fc tag using mouse anti-human IgG Fc antibody (green). Blue: DRAQ5 fluorescent DNA dye.

#### **KLF15 Antibody - References**

1. Mol Cell Biol. 2000 Oct;20(19):7319-31.
2. Diabetologia. 2005 Jul;48(7):1315-22.