

CD37 Antibody
Purified Mouse Monoclonal Antibody
Catalog # AO1261a**Specification**

CD37 Antibody - Product Information

Application	IF, WB, IHC
Primary Accession	P11049
Reactivity	Human, Mouse
Host	Mouse
Clonality	Monoclonal
Isotype	IgG1
Calculated MW	31.7kDa KDa

Description

CD37, also known as GP52-40, TSPAN26, MGC120234. Enterz Protein NP_001035120. It is a member of the transmembrane 4 superfamily, also known as the tetraspanin family. Most of these members are cell-surface proteins that are characterized by the presence of four hydrophobic domains. The proteins mediate signal transduction events that play a role in the regulation of cell development, activation, growth and motility. This encoded protein is a cell surface glycoprotein that is known to complex with integrins and other transmembrane 4 superfamily proteins. It may play a role in T-cell-B-cell interactions. Alternate splicing results in multiple transcript variants encoding different isoforms.

Immunogen

Purified recombinant fragment of CD37 expressed in E. Coli.

Formulation

Ascitic fluid containing 0.03% sodium azide.

CD37 Antibody - Additional Information

Gene ID 951

Other Names

Leukocyte antigen CD37, Tetraspanin-26, Tspan-26, CD37, CD37, TSPAN26

Dilution

IF~~1/200 - 1/1000
WB~~1:500~~2000
IHC~~1:200~~1000

Storage

Maintain refrigerated at 2-8°C for up to 6 months. For long term storage store at -20°C in small aliquots to prevent freeze-thaw cycles.

Precautions

CD37 Antibody is for research use only and not for use in diagnostic or therapeutic procedures.

CD37 Antibody - Protein Information

Name CD37

Synonyms TSPAN26

Cellular Location

Membrane; Multi-pass membrane protein.

Tissue Location

B-lymphocytes.

CD37 Antibody - Protocols

Provided below are standard protocols that you may find useful for product applications.

- [Western Blot](#)
- [Blocking Peptides](#)
- [Dot Blot](#)
- [Immunohistochemistry](#)
- [Immunofluorescence](#)
- [Immunoprecipitation](#)
- [Flow Cytometry](#)
- [Cell Culture](#)

CD37 Antibody - Images

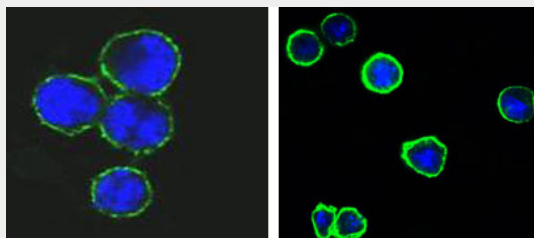


Figure 1: Confocal immunofluorescence analysis of methanol-fixed BCBL-1 (left) and L1210 (right) cells using CD37 mouse mAb(green), showing membrane localization. Blue: DRAQ5 fluorescent DNA dye.

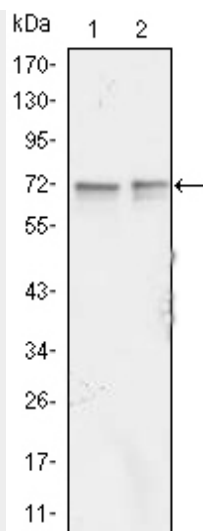


Figure 1: Western blot analysis using FMR1 mouse mAb against Jurkat (1) and K562 (2) cell lysate.

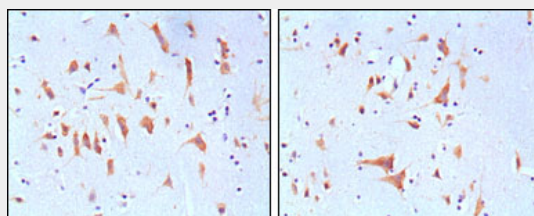


Figure 2: Immunohistochemical analysis of paraffin-embedded human brain tissues, showing cytoplasmic localization with DAB staining using FMR1 mouse mAb.

CD37 Antibody - References

1. J Immunol. 2004 Mar 1;172(5):2953-61.
2. J Immunol. 2007 Jan 1;178(1):154-62.