

**REG1A Antibody**  
**Purified Mouse Monoclonal Antibody**  
**Catalog # AO1293a****Specification**

---

**REG1A Antibody - Product Information**

Application	IHC, IF, WB
Primary Accession	<a href="#">P05451</a>
Reactivity	Human
Host	Mouse
Clonality	Monoclonal
Isotype	IgG1
Calculated MW	19kDa KDa

**Description**

REG1A (regenerating islet-derived 1 alpha), also known as PTP, PSP, is a member of the Reg family of secreted proteins with a C-type lectin domain. REG1A is associated with islet cell regeneration and diabetogenesis and may be involved in pancreatic lithogenesis. Due to variable glycosylation, pancreatic REG1A exists as multiple species of 16 - 18 kDa. REG1A promotes the maintenance and growth of pancreatic islet  $\beta$ -cells and intestinal villi. It is upregulated in pancreatitis and some carcinomas. REG1A is an antigenic target in autoimmune diabetes.

**Immunogen**

Purified recombinant fragment of human REG1A fused with hIgGfc tag expressed in HEK293 cell line.

**Formulation**

Ascitic fluid containing 0.03% sodium azide.

**REG1A Antibody - Additional Information**

**Gene ID** 5967

**Other Names**

Lithostathine-1-alpha, Islet cells regeneration factor, ICRF, Islet of Langerhans regenerating protein, REG, Pancreatic stone protein, PSP, Pancreatic thread protein, PTP, Regenerating islet-derived protein 1-alpha, REG-1-alpha, Regenerating protein I alpha, REG1A, PSPS, PSPS1, REG

**Dilution**

IHC~~1/200 - 1/1000

IF~~1/200 - 1/1000

WB~~1:500~~2000

**Storage**

Maintain refrigerated at 2-8°C for up to 6 months. For long term storage store at -20°C in small aliquots to prevent freeze-thaw cycles.

**Precautions**

REG1A Antibody is for research use only and not for use in diagnostic or therapeutic procedures.

## REG1A Antibody - Protein Information

**Name** REG1A

**Synonyms** PSPS, PSPS1, REG

### Function

Might act as an inhibitor of spontaneous calcium carbonate precipitation. May be associated with neuronal sprouting in brain, and with brain and pancreas regeneration.

### Cellular Location

Secreted.

### Tissue Location

In pancreatic acinar cells and, in lower levels, in brain. Enhanced expression of PSP-related transcripts and intraneuronal accumulation of PSP-like proteins is found in brain from Alzheimer disease and Down syndrome patients.

## REG1A Antibody - Protocols

Provided below are standard protocols that you may find useful for product applications.

- [Western Blot](#)
- [Blocking Peptides](#)
- [Dot Blot](#)
- [Immunohistochemistry](#)
- [Immunofluorescence](#)
- [Immunoprecipitation](#)
- [Flow Cytometry](#)
- [Cell Culture](#)

## REG1A Antibody - Images

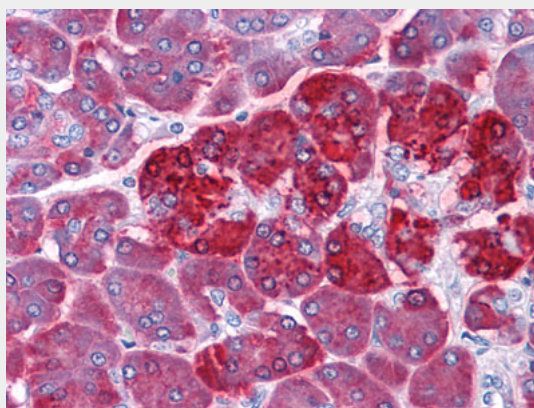


Figure 1: Immunohistochemical analysis of paraffin-embedded human Pancreas tissues using REG1A mouse mAb

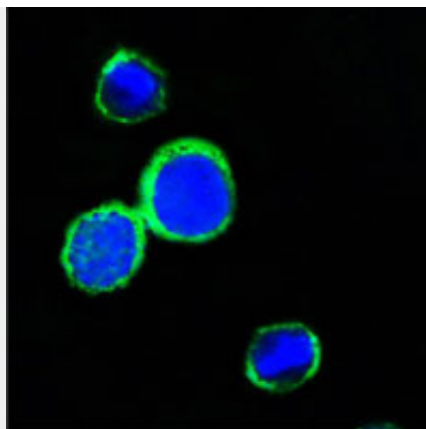


Figure 2: Confocal immunofluorescence analysis of PC12 cells using REG1A mouse mAb (green). Blue: DRAQ5 fluorescent DNA dye.

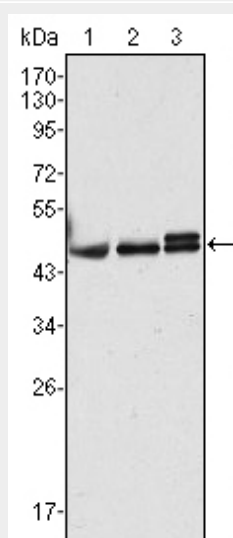


Figure 1: Western blot analysis using CK17 mouse mAb against Hela (1), MCF-7 (2) and A431 (3) cell lysate.

### REG1A Antibody - References

1. Pancreas. 2004 Jul;29(1):14-21.
2. Int J Cancer. 2008 Jul 15;123(2):409-13.