

**AGT Antibody**  
**Purified Mouse Monoclonal Antibody**  
**Catalog # AO1300a****Specification**

---

**AGT Antibody - Product Information**

Application	WB, FC, ICC, IF
Primary Accession	<a href="#">P01019</a>
Reactivity	Human
Host	Mouse
Clonality	Monoclonal
Isotype	IgG2b
Calculated MW	53kDa KDa

**Description**

AGT, pre-angiotensinogen or angiotensinogen precursor, is expressed in the liver and is cleaved by the enzyme renin in response to lowered blood pressure. The resulting product, angiotensin I, is then cleaved by angiotensin converting enzyme (ACE) to generate the physiologically active enzyme angiotensin II. The protein is involved in maintaining blood pressure and in the pathogenesis of essential hypertension and preeclampsia. Mutations in this gene are associated with susceptibility to essential hypertension, and can cause renal tubular dysgenesis, a severe disorder of renal tubular development. Defects in this gene have also been associated with non-familial structural atrial fibrillation, and inflammatory bowel disease.

**Immunogen**

Purified recombinant fragment of human AGT expressed in E. Coli.

**Formulation**

Ascitic fluid containing 0.03% sodium azide.

**AGT Antibody - Additional Information**

**Gene ID** 183

**Other Names**

Angiotensinogen, Serpin A8, Angiotensin-1, Angiotensin 1-10, Angiotensin I, Ang I, Angiotensin-2, Angiotensin 1-8, Angiotensin II, Ang II, Angiotensin-3, Angiotensin 2-8, Angiotensin III, Ang III, Des-Asp[1]-angiotensin II, Angiotensin-4, Angiotensin 3-8, Angiotensin IV, Ang IV, Angiotensin 1-9, Angiotensin 1-7, Angiotensin 1-5, Angiotensin 1-4, AGT, SERPINA8

**Dilution**

WB~~1/500 - 1/2000  
FC~~1:200~~400  
ICC~~1:200~~1000  
IF~~1:200~1000.

**Storage**

Maintain refrigerated at 2-8°C for up to 6 months. For long term storage store at -20°C in small aliquots to prevent freeze-thaw cycles.

**Precautions**

AGT Antibody is for research use only and not for use in diagnostic or therapeutic procedures.

**AGT Antibody - Protein Information**

**Name** AGT ([HGNC:333](#))

**Synonyms** SERPINA8

**Function**

Essential component of the renin-angiotensin system (RAS), a potent regulator of blood pressure, body fluid and electrolyte homeostasis.

**Cellular Location**

Secreted

**Tissue Location**

Expressed by the liver and secreted in plasma.

**AGT Antibody - Protocols**

Provided below are standard protocols that you may find useful for product applications.

- [Western Blot](#)
- [Blocking Peptides](#)
- [Dot Blot](#)
- [Immunohistochemistry](#)
- [Immunofluorescence](#)
- [Immunoprecipitation](#)
- [Flow Cytometry](#)
- [Cell Culture](#)

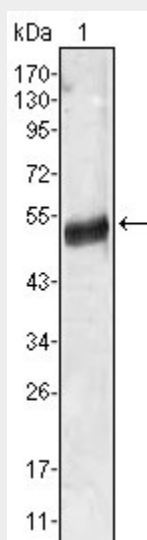
**AGT Antibody - Images**

Figure 1: Western blot analysis using AGT mouse mAb against human plasma (1).

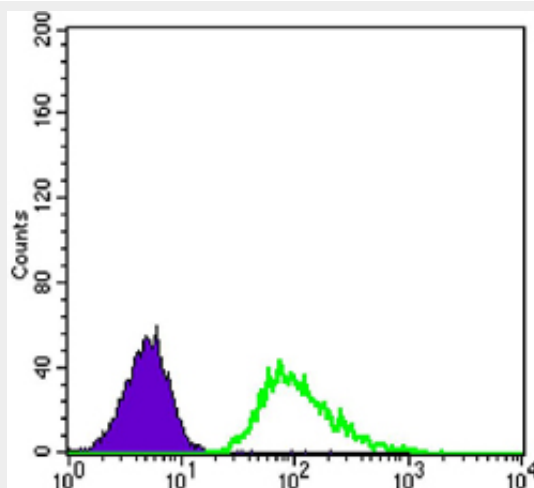


Figure 3: Flow cytometric analysis of A549 cells using TUBB3 mouse mAb (green) and negative control (purple).

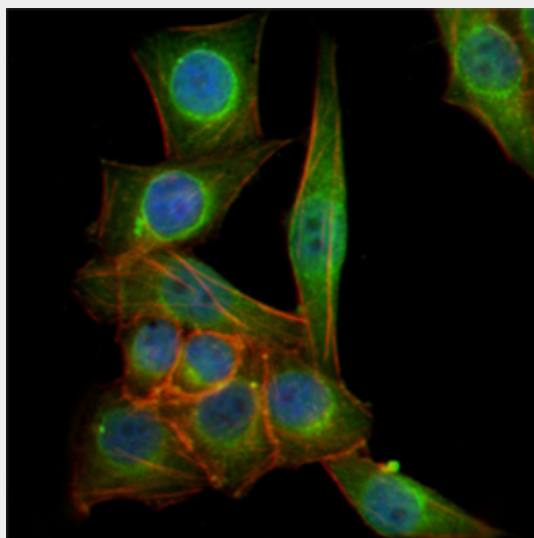


Figure 2: Immunofluorescence analysis of PANC-1 cells using TUBB3 mouse mAb (green). Blue: DRAQ5 fluorescent DNA dye. Red: Actin filaments have been labeled with Alexa Fluor-555 phalloidin.

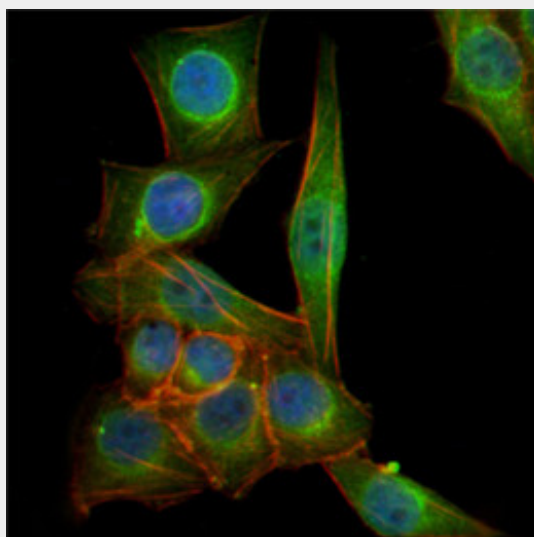


Figure 2: Immunofluorescence analysis of PANC-1 cells using TUBB3 mouse mAb (green). Blue: DRAQ5 fluorescent DNA dye. Red: Actin filaments have been labeled with Alexa Fluor-555 phalloidin.

**AGT Antibody - References**

1. Am J Physiol Heart Circ Physiol. 2007 Sep;293(3):H1900-7.
2. Regul Pept. 2006 Jan 15;133(1-3):155-9.