

**WNT10B Antibody**  
**Purified Mouse Monoclonal Antibody**  
**Catalog # AO1325a****Specification**

---

**WNT10B Antibody - Product Information**

Application	WB, IHC, IF, FC
Primary Accession	<a href="#">O00744</a>
Reactivity	Human
Host	Mouse
Clonality	Monoclonal
Isotype	IgG1
Calculated MW	43kDa KDa

**Description**

WNT10B: wingless-type MMTV integration site family, member 10B. The WNT family consists of structurally related secreted signaling proteins. These proteins have been implicated in oncogenesis and in several developmental processes, including regulation of cell fate and patterning during embryogenesis. WNT10B is a member of the WNT gene family. It may be involved in breast cancer, and its protein signaling is likely a molecular switch that governs adipogenesis. This protein is 96% identical to the mouse Wnt10B protein at the amino acid level. The WNT10B gene is clustered with another family member, WNT1, in the chromosome 12q13 region.

**Immunogen**

Purified recombinant fragment of human WNT10B expressed in E. Coli.

**Formulation**

Ascitic fluid containing 0.03% sodium azide.

**WNT10B Antibody - Additional Information**

**Gene ID** 7480

**Other Names**

Protein Wnt-10b, Protein Wnt-12, WNT10B, WNT12

**Dilution**

WB~~1/500 - 1/2000  
IHC~~1/200 - 1/1000  
IF~~1/200 - 1/1000  
FC~~1:200~~400

**Storage**

Maintain refrigerated at 2-8°C for up to 6 months. For long term storage store at -20°C in small aliquots to prevent freeze-thaw cycles.

**Precautions**

WNT10B Antibody is for research use only and not for use in diagnostic or therapeutic procedures.

## WNT10B Antibody - Protein Information

**Name** WNT10B

**Synonyms** WNT12

### Function

Member of the Wnt ligand gene family that encodes for secreted proteins, which activate the Wnt signaling cascade. Specifically activates canonical Wnt/beta-catenin signaling and thus triggers beta-catenin/LEF/TCF-mediated transcriptional programs. Involved in signaling networks controlling stemness, pluripotency and cell fate decisions. Acts in the immune system, mammary gland, adipose tissue, bone and skin.

### Cellular Location

Secreted, extracellular space, extracellular matrix. Secreted

### Tissue Location

Detected in most adult tissues. Highest levels were found in heart and skeletal muscle. Low levels are found in brain

## WNT10B Antibody - Protocols

Provided below are standard protocols that you may find useful for product applications.

- [Western Blot](#)
- [Blocking Peptides](#)
- [Dot Blot](#)
- [Immunohistochemistry](#)
- [Immunofluorescence](#)
- [Immunoprecipitation](#)
- [Flow Cytometry](#)
- [Cell Culture](#)

## WNT10B Antibody - Images

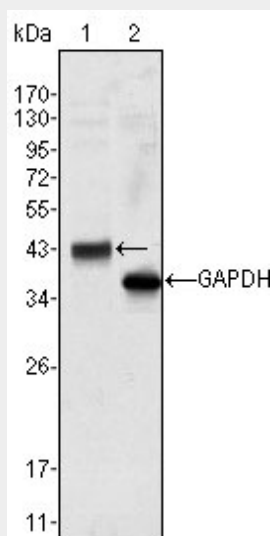


Figure 1: Western blot analysis using WNT10B mouse mAb against Hela cell lysate (1).

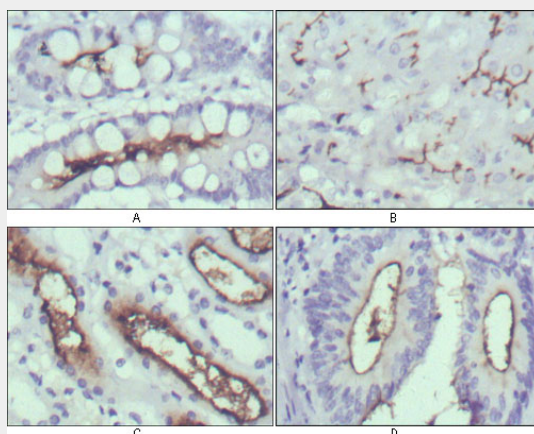


Figure 2: Immunohistochemical analysis of paraffin-embedded human normal stomach (A), normal liver (B), normal kidney (C) and rectum cancer tissues (D) using WNT10B mouse mAb with DAB staining.

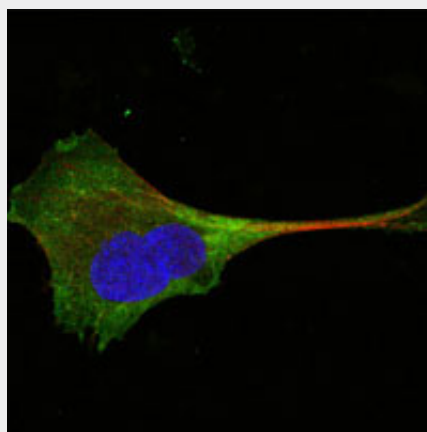


Figure 3: Confocal immunofluorescence analysis of PANC-1 cells using WNT10B mouse mAb (green). Red: Actin filaments have been labeled with Alexa Fluor-555 phalloidin. Blue: DRAQ5 fluorescent DNA dye.

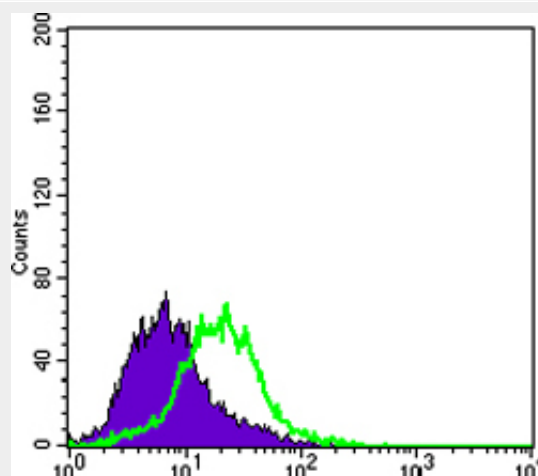


Figure 4: Flow cytometric analysis of PACN-1 cells using KRT15 mouse mAb (green) and negative control (purple).

#### WNT10B Antibody - References

1. Oncogene. 1997 Mar 13;14(10):1249-53. 2. Int J Oncol. 2001 Dec;19(6):1187-92