

**PGA5 Antibody**  
**Purified Mouse Monoclonal Antibody**  
**Catalog # AO1326a****Specification**

---

**PGA5 Antibody - Product Information**

Application	WB, IHC, FC
Primary Accession	<a href="#">P0DJ09</a>
Reactivity	Human
Host	Mouse
Clonality	Monoclonal
Isotype	IgG1
Calculated MW	42kDa KDa

**Description**

PGA5: Pepsinogen 5, group I (pepsinogen A). Pepsinogens are the inactive precursors of pepsin, the major acid protease found in the stomach. Pepsin is one of the main proteolytic enzymes secreted by the gastric mucosa. Pepsin consists of a single polypeptide chain and arises from its precursor, pepsinogen, by removal of a 41 amino acid segment from the N-terminus. Pepsinogen is synthesized in the stomach lining, and hydrochloric acid, also produced by the gastric mucosa, is necessary to convert the inactive enzyme and to maintain the optimum acidity (pH 1-3) for pepsin function. Pepsin is particularly effective in cleaving peptide bonds involving aromatic amino acids. Pepsin shows extremely broad specificity; although bonds involving phenylalanine and leucine are preferred, many others are also cleaved to some extent. PGA5 is a member of the subfamily A1 within the pepsin family and is the predominant endopeptidase in the gastric juice of vertebrates. PGA5 is inhibited by ovUS-1, a uterine serpin.

**Immunogen**

Purified recombinant fragment of human PGA5 expressed in E. Coli.

**Formulation**

Ascitic fluid containing 0.03% sodium azide.

**PGA5 Antibody - Additional Information**

**Gene ID** 5222

**Other Names**

Pepsin A-5, 3.4.23.1, Pepsinogen-5, PGA5

**Dilution**

WB~~1/500 - 1/2000

IHC~~1/200 - 1/1000

FC~~1:200~~400

**Storage**

Maintain refrigerated at 2-8°C for up to 6 months. For long term storage store at -20°C in small aliquots to prevent freeze-thaw cycles.

**Precautions**

PGA5 Antibody is for research use only and not for use in diagnostic or therapeutic procedures.

## PGA5 Antibody - Protein Information

**Name** PGA5

### Function

Shows particularly broad specificity; although bonds involving phenylalanine and leucine are preferred, many others are also cleaved to some extent.

### Cellular Location

Secreted.

## PGA5 Antibody - Protocols

Provided below are standard protocols that you may find useful for product applications.

- [Western Blot](#)
- [Blocking Peptides](#)
- [Dot Blot](#)
- [Immunohistochemistry](#)
- [Immunofluorescence](#)
- [Immunoprecipitation](#)
- [Flow Cytometry](#)
- [Cell Culture](#)

## PGA5 Antibody - Images

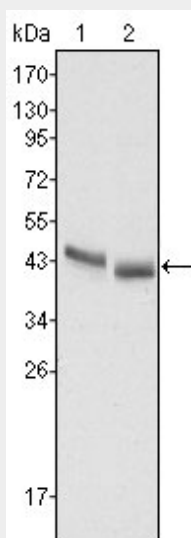


Figure 1: Western blot analysis using PGA5 mouse mAb against HepG2 (1) and SMMC-7721 (2) cell lysate.

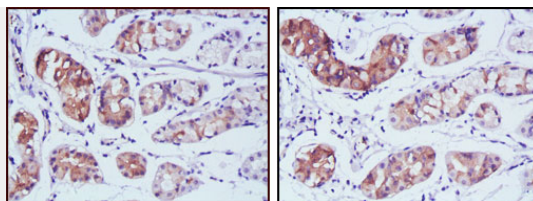


Figure 2: Immunohistochemical analysis of paraffin-embedded human stomach cancer tissues using PGA5 mouse mAb with DAB staining.

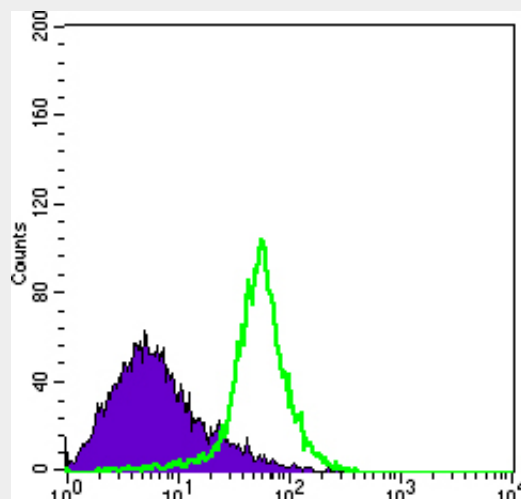


Figure 3: Flow cytometric analysis of Hela cells using ITGA5 mouse mAb (green) and negative control (purple).

#### **PGA5 Antibody - References**

1. Proc Natl Acad Sci U S A. 2002 Dec 24;99(26):16899-903.
2. Nat Genet. 2004 Jan;36(1):40-5.