

SMC1 Antibody
Purified Mouse Monoclonal Antibody
Catalog # AO1346a**Specification**

SMC1 Antibody - Product Information

Application	WB, IHC, FC, IF
Primary Accession	Q14683
Reactivity	Human
Host	Mouse
Clonality	Monoclonal
Isotype	IgG1
Calculated MW	143kDa KDa

Description

Proper cohesion of sister chromatids is a prerequisite for the correct segregation of chromosomes during cell division. The cohesin multiprotein complex is required for sister chromatid cohesion. This complex is composed partly of two structural maintenance of chromosomes (SMC) proteins, SMC3 and either SMC1L2 or the protein encoded by this gene. Most of the cohesin complexes dissociate from the chromosomes before mitosis, although those complexes at the kinetochore remain. Therefore, the encoded protein is thought to be an important part of functional kinetochores. In addition, this protein interacts with BRCA1 and is phosphorylated by ATM, indicating a potential role for this protein in DNA repair. This gene, which belongs to the SMC gene family, is located in an area of the X-chromosome that escapes X inactivation.

Immunogen

Purified recombinant fragment of human SMC1 expressed in E. Coli.

Formulation

Purified antibody in PBS with 0.05% sodium azide

SMC1 Antibody - Additional Information

Gene ID 8243

Other Names

Structural maintenance of chromosomes protein 1A, SMC protein 1A, SMC-1-alpha, SMC-1A, Sb1.8, SMC1A, DXS423E, KIAA0178, SB1.8, SMC1, SMC1L1

Dilution

WB~~1/500 - 1/2000
IHC~~1/200 - 1/1000
FC~~1/200 - 1/400
IF~~1/200 - 1/1000

Storage

Maintain refrigerated at 2-8°C for up to 6 months. For long term storage store at -20°C in small aliquots to prevent freeze-thaw cycles.

Precautions

SMC1 Antibody is for research use only and not for use in diagnostic or therapeutic procedures.

SMC1 Antibody - Protein Information

Name SMC1A

Synonyms DXS423E, KIAA0178, SB1.8, SMC1, SMC1L1

Function

Involved in chromosome cohesion during cell cycle and in DNA repair. Central component of cohesin complex. The cohesin complex is required for the cohesion of sister chromatids after DNA replication. The cohesin complex apparently forms a large proteinaceous ring within which sister chromatids can be trapped. At anaphase, the complex is cleaved and dissociates from chromatin, allowing sister chromatids to segregate. The cohesin complex may also play a role in spindle pole assembly during mitosis. Involved in DNA repair via its interaction with BRCA1 and its related phosphorylation by ATM, or via its phosphorylation by ATR. Works as a downstream effector both in the ATM/NBS1 branch and in the ATR/MSH2 branch of S-phase checkpoint.

Cellular Location

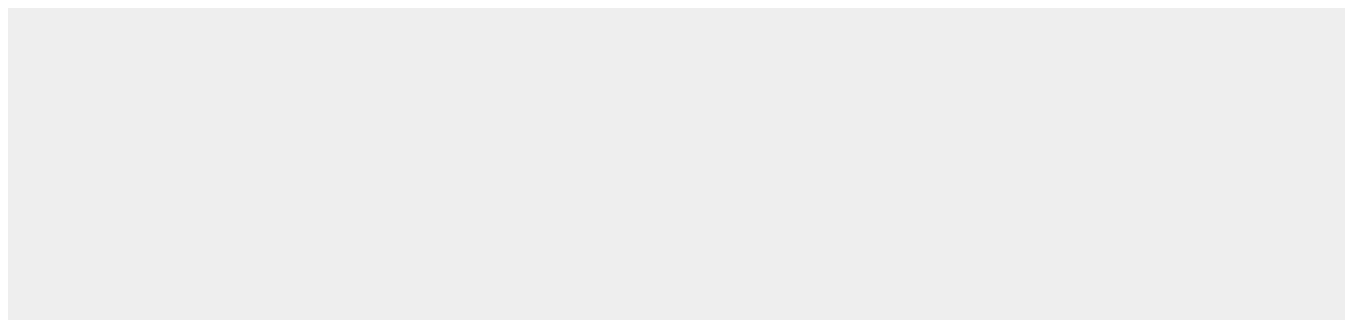
Nucleus. Chromosome. Chromosome, centromere, kinetochore. Note=Associates with chromatin. Before prophase it is scattered along chromosome arms. During prophase, most of cohesin complexes dissociate from chromatin probably because of phosphorylation by PLK, except at centromeres, where cohesin complexes remain. At anaphase, the RAD21 subunit of the cohesin complex is cleaved, leading to the dissociation of the complex from chromosomes, allowing chromosome separation. In germ cells, cohesin complex dissociates from chromatin at prophase I, and may be replaced by a meiosis-specific cohesin complex. The phosphorylated form on Ser-957 and Ser-966 associates with chromatin during G1/S/G2 phases but not during M phase, suggesting that phosphorylation does not regulate cohesin function. Integral component of the functional centromere- kinetochore complex at the kinetochore region during mitosis

SMC1 Antibody - Protocols

Provided below are standard protocols that you may find useful for product applications.

- [Western Blot](#)
- [Blocking Peptides](#)
- [Dot Blot](#)
- [Immunohistochemistry](#)
- [Immunofluorescence](#)
- [Immunoprecipitation](#)
- [Flow Cytometry](#)
- [Cell Culture](#)

SMC1 Antibody - Images



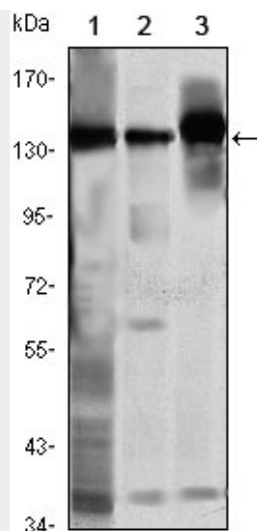


Figure 1: Western blot analysis using SMC1 mouse mAb against K562 (1), Jurkat (2) and A549 (3) cell lysate.

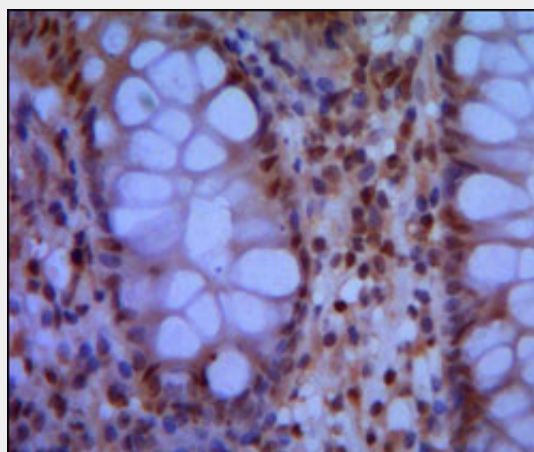


Figure 2: Immunohistochemical analysis of paraffin-embedded human colon using SMC1 mouse mAb with DAB staining.

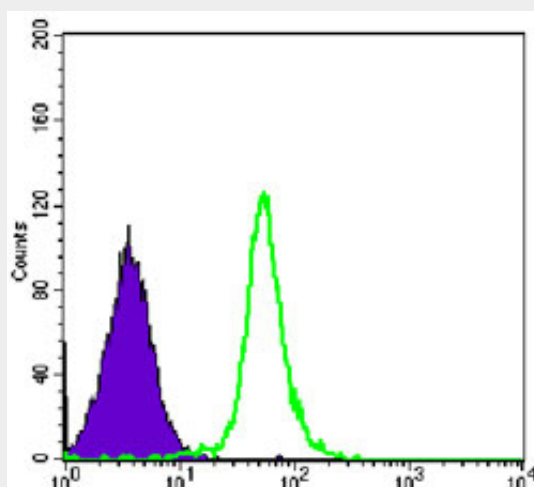


Figure 3: Flow cytometric analysis of HeLa cells using SMC1 mouse mAb (green) and negative control (purple).

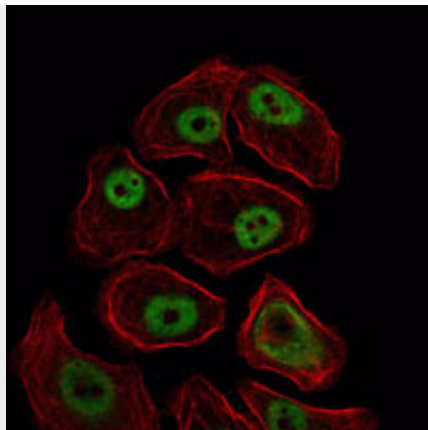


Figure 4: Immunofluorescence analysis of NIH/3T3 cells using SMC1 mouse mAb (green). Red: Actin filaments have been labeled with Alexa Fluor-555 phalloidin.

SMC1 Antibody - References

1. Cell Cycle. 2006 Nov 1;5(21):2537-42.
2. FEBS Lett. 2007 Jun 26;581(16):3005-12.