

**BDH1 Antibody**  
**Purified Mouse Monoclonal Antibody**  
**Catalog # AO1356a****Specification**

---

**BDH1 Antibody - Product Information**

Application	WB, IHC, FC
Primary Accession	<a href="#">Q02338</a>
Reactivity	Human, Mouse
Host	Mouse
Clonality	Monoclonal
Isotype	IgG1
Calculated MW	38kDa KDa

**Description**

BDH1 (3-hydroxybutyrate dehydrogenase, type 1), it is a member of the short-chain dehydrogenase/reductase gene family. This protein forms a homotetrameric lipid-requiring enzyme of the mitochondrial membrane and has a specific requirement for phosphatidylcholine for optimal enzymatic activity. It catalyzes the interconversion of acetoacetate and (R)-3-hydroxybutyrate, the two major ketone bodies produced during fatty acid catabolism.

**Immunogen**

Purified recombinant fragment of human BDH1 expressed in E. Coli.

**Formulation**

Ascitic fluid containing 0.03% sodium azide.

**BDH1 Antibody - Additional Information**

**Gene ID** 622

**Other Names**

D-beta-hydroxybutyrate dehydrogenase, mitochondrial, BDH, 1.1.1.30, 3-hydroxybutyrate dehydrogenase, Short chain dehydrogenase/reductase family 9C member 1, BDH1, BDH, SDR9C1

**Dilution**

WB~~1/500 - 1/2000  
IHC~~1/500 - 1/2000  
FC~~1:200~~400

**Storage**

Maintain refrigerated at 2-8°C for up to 6 months. For long term storage store at -20°C in small aliquots to prevent freeze-thaw cycles.

**Precautions**

BDH1 Antibody is for research use only and not for use in diagnostic or therapeutic procedures.

**BDH1 Antibody - Protein Information**

**Name** BDH1 ([HGNC:1027](#))

**Cellular Location**

Mitochondrion inner membrane {ECO:0000250|UniProtKB:Q02337}. Mitochondrion matrix {ECO:0000250|UniProtKB:Q02337}

**BDH1 Antibody - Protocols**

Provided below are standard protocols that you may find useful for product applications.

- [Western Blot](#)
- [Blocking Peptides](#)
- [Dot Blot](#)
- [Immunohistochemistry](#)
- [Immunofluorescence](#)
- [Immunoprecipitation](#)
- [Flow Cytometry](#)
- [Cell Culture](#)

**BDH1 Antibody - Images**

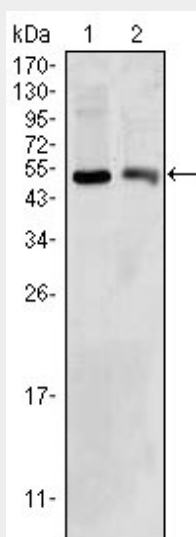


Figure 1: Western blot analysis using BDH1 mouse mAb against HepG2 (1) and NIH/3T3 (2) cell lysate.

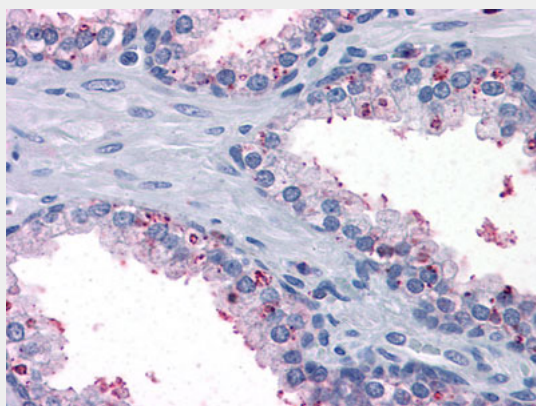


Figure 2: Immunohistochemical analysis of paraffin-embedded human Prostate tissues using anti-BDH1 mouse mAb

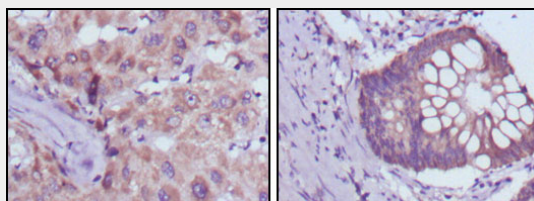


Figure 3: Immunohistochemical analysis of paraffin-embedded human liver cancer (left) and colorectal cancer tissues (right) using BDH1 mouse mAb with DAB staining.

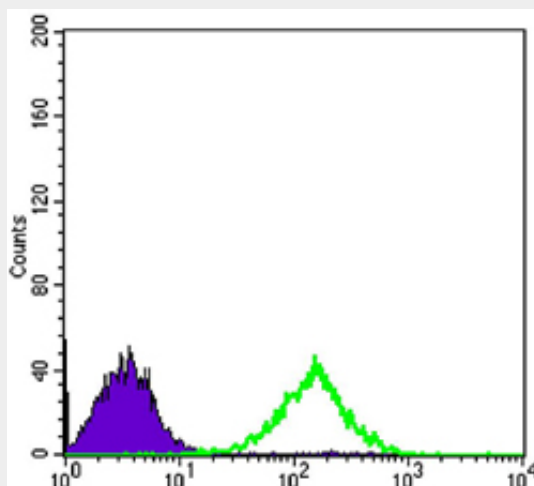


Figure 3: Flow cytometric analysis of Jurkat cells using CD69 mouse mAb (green) and negative control (purple).

#### BDH1 Antibody - References

1. Biochemistry. 1996 Jun 25;35(25):8158-65.
2. Biochemistry. 2000 Oct 3;39(39):11928-38.
3. Proc Natl Acad Sci U S A. 2001 Dec 18;98(26):15089-94.