

CDC25C Antibody
Purified Mouse Monoclonal Antibody
Catalog # AO1375a**Specification**

CDC25C Antibody - Product Information

Application	WB, IHC, FC, ICC, IF
Primary Accession	P30307
Reactivity	Human
Host	Mouse
Clonality	Monoclonal
Isotype	IgG1
Calculated MW	58kDa KDa

Description

Cdc25C is a tyrosine phosphatase and belongs to the Cdc25 phosphatase family. It has been highly conserved during evolution and it plays a key role in the regulation of cell division. It directs dephosphorylation of cyclin B-bound CDC2 and triggers entry into mitosis. It is also thought to suppress p53-induced growth arrest. Cdc25C is mainly expressed in G2 phase. Multiple alternatively spliced transcript variants of this gene have been described, however, the full-length nature of many of them is not known.

Immunogen

Purified recombinant fragment of human CDC25C expressed in E. Coli.

Formulation

Ascitic fluid containing 0.03% sodium azide.

CDC25C Antibody - Additional Information

Gene ID 995

Other Names

M-phase inducer phosphatase 3, 3.1.3.48, Dual specificity phosphatase Cdc25C, CDC25C

Dilution

WB~~1/500 - 1/2000
IHC~~1/200 - 1/1000
FC~~1:200~~400
ICC~~1:200~~1000

Storage

Maintain refrigerated at 2-8°C for up to 6 months. For long term storage store at -20°C in small aliquots to prevent freeze-thaw cycles.

Precautions

CDC25C Antibody is for research use only and not for use in diagnostic or therapeutic procedures.

CDC25C Antibody - Protein Information

Name CDC25C**Function**

Functions as a dosage-dependent inducer in mitotic control. Tyrosine protein phosphatase required for progression of the cell cycle (PubMed:8119945). When phosphorylated, highly effective in activating G2 cells into prophase (PubMed:8119945). Directly dephosphorylates CDK1 and activates its kinase activity (PubMed:8119945).

Cellular Location

Nucleus

CDC25C Antibody - Protocols

Provided below are standard protocols that you may find useful for product applications.

- [Western Blot](#)
- [Blocking Peptides](#)
- [Dot Blot](#)
- [Immunohistochemistry](#)
- [Immunofluorescence](#)
- [Immunoprecipitation](#)
- [Flow Cytometry](#)
- [Cell Culture](#)

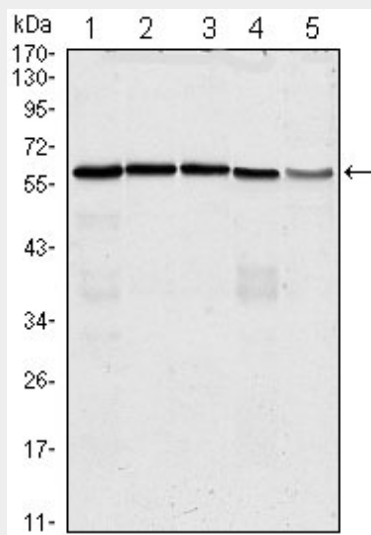
CDC25C Antibody - Images

Figure 1: Western blot analysis using anti-CDC25C mAb against Hela (1), K562 (2), PC-3 (3), HEK293 (4) and Raw264.7 (5) cell lysate.

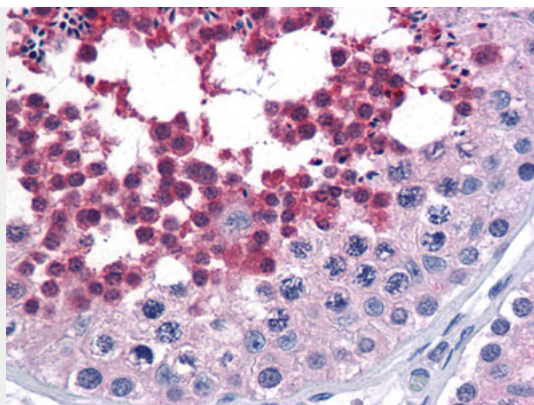


Figure 2: Immunohistochemical analysis of paraffin-embedded human Testis tissues using anti-CDC25C mouse mAb

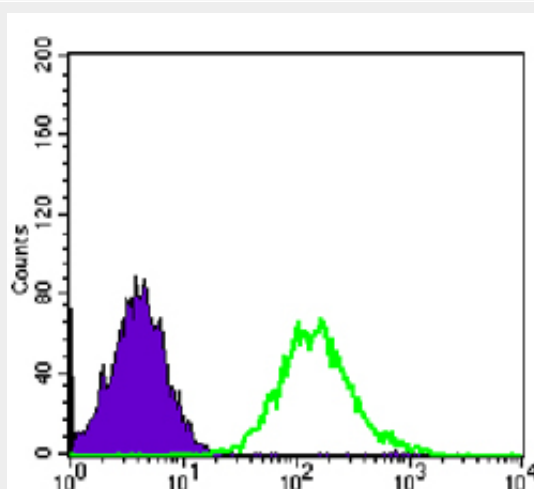


Figure 3: Flow cytometric analysis of PC-2 cells using CDC2 mouse mAb (green) and negative control (purple).

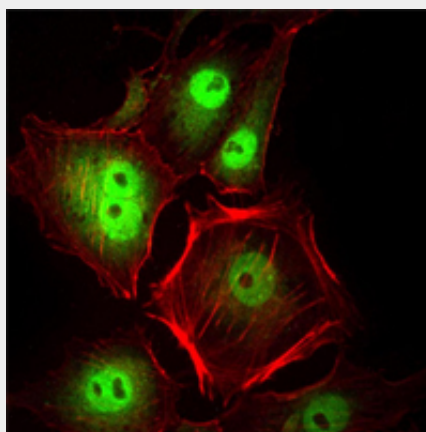


Figure 2: Immunofluorescence analysis of Hela cells using CDC2 mouse mAb (green). Red: Actin filaments have been labeled with Alexa Fluor-555 phalloidin.

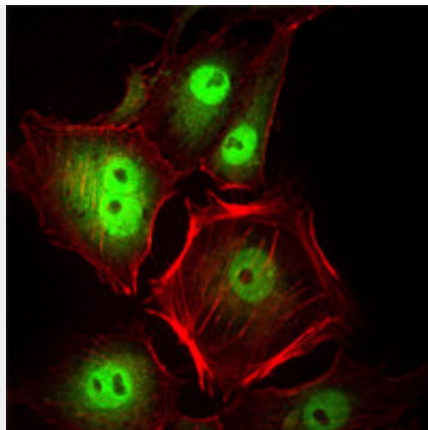


Figure 2: Immunofluorescence analysis of HeLa cells using CDC2 mouse mAb (green). Red: Actin filaments have been labeled with Alexa Fluor-555 phalloidin.

CDC25C Antibody - References

1. Cancer Cell. 2007 Mar;11(3):275-89. 2. Int J Biochem Cell Biol. 2007;39(9):1707-13. 3. Int J Cancer. 2010 May 1;126(9):2199-210.