

**CSF2 Antibody**  
**Purified Mouse Monoclonal Antibody**  
**Catalog # AO1376a****Specification**

---

**CSF2 Antibody - Product Information**

Application	<b>WB</b>
Primary Accession	<a href="#">P04141</a>
Reactivity	<b>Human</b>
Host	<b>Mouse</b>
Clonality	<b>Monoclonal</b>
Isotype	<b>IgG1</b>
Calculated MW	<b>16kDa KDa</b>

**Description**

The protein encoded by this gene is a cytokine that controls the production, differentiation, and function of granulocytes and macrophages. The active form of the protein is found extracellularly as a homodimer. This gene has been localized to a cluster of related genes at chromosome region 5q31, which is known to be associated with interstitial deletions in the 5q- syndrome and acute myelogenous leukemia. Other genes in the cluster include those encoding interleukins 4, 5, and 13.

**Immunogen**

Purified recombinant fragment of human CSF2 (aa18-144) expressed in E. Coli. <br />

**Formulation**

Ascitic fluid containing 0.03% sodium azide. <br />

**CSF2 Antibody - Additional Information**

**Gene ID** 1437

**Other Names**

Granulocyte-macrophage colony-stimulating factor, GM-CSF, Colony-stimulating factor, CSF, Molgramostin, Sargramostim, CSF2, GMCSF

**Dilution**

WB~~1/500 - 1/2000

**Storage**

Maintain refrigerated at 2-8°C for up to 6 months. For long term storage store at -20°C in small aliquots to prevent freeze-thaw cycles.

**Precautions**

CSF2 Antibody is for research use only and not for use in diagnostic or therapeutic procedures.

**CSF2 Antibody - Protein Information**

**Name** CSF2

**Synonyms** GMCSF

**Function**

Cytokine that stimulates the growth and differentiation of hematopoietic precursor cells from various lineages, including granulocytes, macrophages, eosinophils and erythrocytes.

**Cellular Location**

Secreted

**CSF2 Antibody - Protocols**

Provided below are standard protocols that you may find useful for product applications.

- [Western Blot](#)
- [Blocking Peptides](#)
- [Dot Blot](#)
- [Immunohistochemistry](#)
- [Immunofluorescence](#)
- [Immunoprecipitation](#)
- [Flow Cytometry](#)
- [Cell Culture](#)

**CSF2 Antibody - Images**

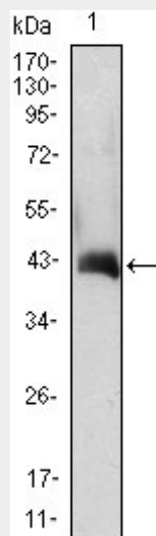


Figure 1: Western blot analysis using CSF2 mAb against CSF2(AA: 18-144)-hIgGFc transfected HEK293 cell lysate.

**CSF2 Antibody - References**

1. Eur Respir J. 2008 Jul;32(1):25-34. 2. Cell. 2008 Aug 8;134(3):496-507. 3. Mol Immunol. 2008 Nov;46(1):37-44.