

**PTH Antibody**  
**Purified Mouse Monoclonal Antibody**  
**Catalog # AO1377a****Specification**

---

**PTH Antibody - Product Information**

Application	WB, FC, IHC, IF
Primary Accession	<a href="#">P01270</a>
Reactivity	Human
Host	Mouse
Clonality	Monoclonal
Isotype	IgG2b
Calculated MW	12.9kDa KDa

**Description**

The protein encoded by this gene is a hormone secreted by parathyroid cells. This hormone elevates blood Ca<sup>2+</sup> level by dissolving the salts in bone and preventing their renal excretion. Defects in this gene are a cause of familial isolated hypoparathyroidism (FIH).

**Immunogen**

Purified recombinant fragment of human PTH(aa1-115) expressed in E. Coli.

**Formulation**

Ascitic fluid containing 0.03% sodium azide. <br />

**PTH Antibody - Additional Information**

**Gene ID** 5741

**Other Names**

Parathyroid hormone, PTH, Parathormone, Parathyrin, PTH

**Dilution**

WB~~1/500 - 1/2000

FC~~1:200~~400

IHC~~1:200~~1000

IF~~1:200~1000.

**Storage**

Maintain refrigerated at 2-8°C for up to 6 months. For long term storage store at -20°C in small aliquots to prevent freeze-thaw cycles.

**Precautions**

PTH Antibody is for research use only and not for use in diagnostic or therapeutic procedures.

**PTH Antibody - Protein Information**

**Name** PTH

**Function**

PTH elevates calcium level by dissolving the salts in bone and preventing their renal excretion. Stimulates [1-<sup>14</sup>C]-2-deoxy-D- glucose (2DG) transport and glycogen synthesis in osteoblastic cells.

**Cellular Location**

Secreted.

**PTH Antibody - Protocols**

Provided below are standard protocols that you may find useful for product applications.

- [Western Blot](#)
- [Blocking Peptides](#)
- [Dot Blot](#)
- [Immunohistochemistry](#)
- [Immunofluorescence](#)
- [Immunoprecipitation](#)
- [Flow Cytometry](#)
- [Cell Culture](#)

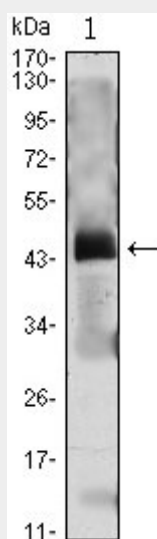
**PTH Antibody - Images**

Figure 1: Western blot analysis using PTH mAb against PTH(AA: 1-115)-hlgGfc transfected HEK293 cell lysate.

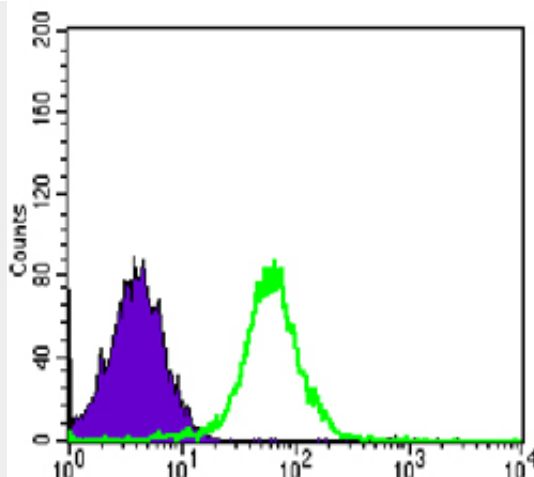


Figure 4: Flow cytometric analysis of PC-2 cells using CDH2 mouse mAb (green) and negative control (purple).

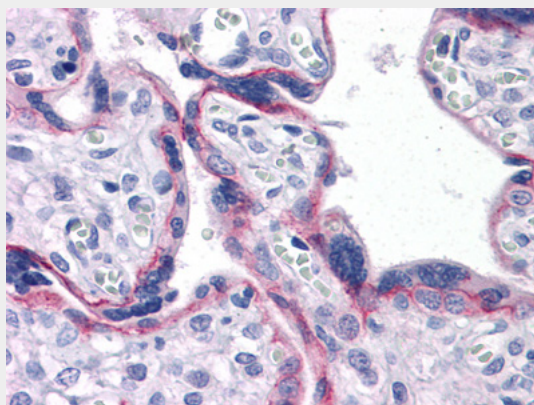


Figure 3: Immunohistochemical analysis of paraffin-embedded human Placenta tissues using CDH2 mouse mAb

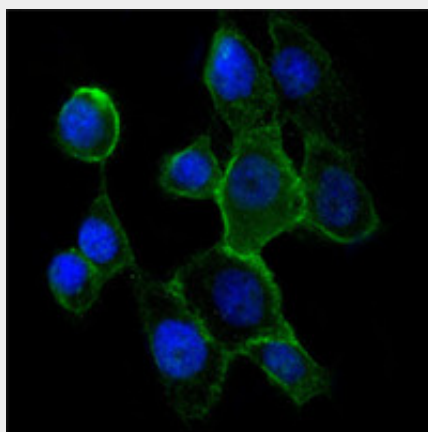


Figure 3: Immunofluorescence analysis of A431 cells using CDH2 mouse mAb (green). Blue: DRAQ5 fluorescent DNA dye.

#### PTH Antibody - References

1. Eur Spine J. 2006 Oct;15(10):1521-8. 2. Blood. 2008 May 1;111(9):4496-9. 3. Clin J Am Soc Nephrol. 2009 Sep;4(9):1465-76.