

GATA1 Antibody
Mouse Monoclonal Antibody to GATA1
Catalog # AO1381b**Specification**

GATA1 Antibody - Product Information

Application	WB, IHC, IF
Primary Accession	P15976
Reactivity	Human
Host	Mouse
Clonality	Monoclonal
Isotype	Mouse IgG2b
Calculated MW	42751

Description

erythroid specific transcription factor,GATA sequence binding protein (same as EryF1,NF-E1,EF-1,EF gamma-a,GF1),expressed in RBC,mast cell,megakaryocyte,hematopoietic progenitor cell,testis,associated with a special class of nuclear bodies,activated by erythropoietin,inactivated by coactivation of DEATH receptors (TNFRSF6) mediated caspase cleavage Tissue specificity: Erythrocytes

Immunogen

Purified recombinant fragment of human GATA1 expressed in E. Coli.

GATA1 Antibody - Additional Information

Gene ID 2623

Other Names

Erythroid transcription factor, Eryf1, GATA-binding factor 1, GATA-1, GF-1, NF-E1 DNA-binding protein, GATA1, ERYF1, GF1

Target/Specificity

Purified recombinant fragment of human GATA1 expressed in E. Coli.

Dilution

WB~~1:500~~2000
IHC~~1:200~~1000
IF~~1:200~1000.

Format

Ascitic fluid containing 0.03% sodium azide.

Storage

Maintain refrigerated at 2-8°C for up to 6 months. For long term storage store at -20°C in small aliquots to prevent freeze-thaw cycles.

Precautions

GATA1 Antibody is for research use only and not for use in diagnostic or therapeutic procedures.

GATA1 Antibody - Protein Information

Name GATA1

Synonyms ERYF1, GF1

Function

Transcriptional activator or repressor which serves as a general switch factor for erythroid development (PubMed: [35030251](http://www.uniprot.org/citations/35030251)). It binds to DNA sites with the consensus sequence 5'-[AT]GATA[AG]-3' within regulatory regions of globin genes and of other genes expressed in erythroid cells. Activates the transcription of genes involved in erythroid differentiation of K562 erythroleukemia cells, including HBB, HBG1/2, ALAS2 and HMBS (PubMed: [24245781](http://www.uniprot.org/citations/24245781)).

Cellular Location

Nucleus.

Tissue Location

Erythrocytes..

GATA1 Antibody - Protocols

Provided below are standard protocols that you may find useful for product applications.

- [Western Blot](#)
- [Blocking Peptides](#)
- [Dot Blot](#)
- [Immunohistochemistry](#)
- [Immunofluorescence](#)
- [Immunoprecipitation](#)
- [Flow Cytometry](#)
- [Cell Culture](#)

GATA1 Antibody - Images

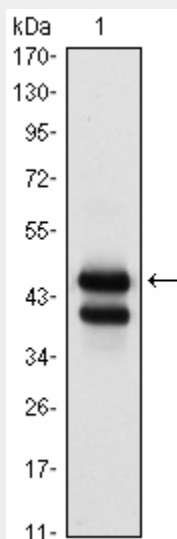


Figure 1: Western blot analysis using GATA1 mouse mAb against K562 (1) cell lysate.

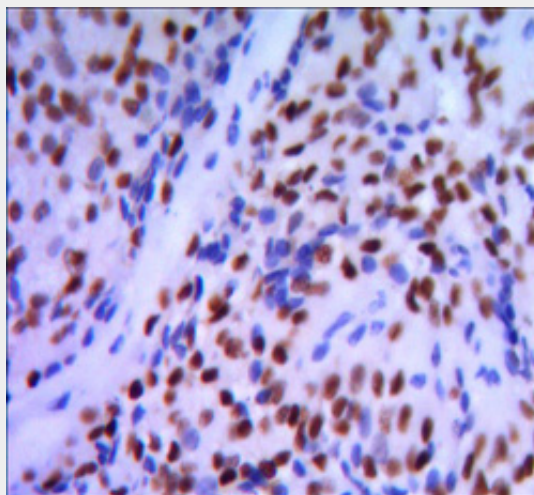


Figure 3: Immunohistochemical analysis of paraffin-embedded pancreatic cancer, using GATA1 mouse mAb with DAB staining.

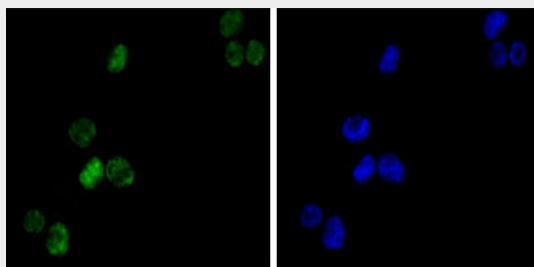


Figure 2: Immunofluorescence analysis of K562(left) cells using GATA1 mouse mAb (green). Blue: DRAQ5 fluorescent DNA dye.

GATA1 Antibody - References

1. Cancer Res. 2009 Apr 15;69(8):3681-8.
2. J Bone Miner Res. 2009 Dec;24(12):2039-49.
3. Blood. 2010 Jun 3;115(22):4367-76.