

MUM1 Antibody
Purified Mouse Monoclonal Antibody
Catalog # AO1401a**Specification**

MUM1 Antibody - Product Information

Application	WB, IHC
Primary Accession	Q2TAK8
Reactivity	Human
Host	Mouse
Clonality	Monoclonal
Isotype	IgG1
Calculated MW	78.6kDa KDa

Description

Mutated melanoma-associated antigen 1 (MUM1) is a 78 kDa protein encoded by the MUM1 gene. MUM1 is expressed in a subset of B cells in the light zone of the germinal center, plasma cells, activated T cells and a wide spectrum of related hematolymphoid neoplasms. Antibodies to MUM1 are useful in the sub classification of lymphoid malignancies.

Immunogen

Purified recombinant fragment of human MUM1 expressed in E. Coli.

Formulation

Ascitic fluid containing 0.03% sodium azide.

MUM1 Antibody - Additional Information

Gene ID 84939

Other Names

PWWP domain-containing protein MUM1, Mutated melanoma-associated antigen 1, MUM-1, Protein expandere, MUM1, EXPAND1

Dilution

WB~~1/500 - 1/2000

IHC~~1/500 - 1/2000

Storage

Maintain refrigerated at 2-8°C for up to 6 months. For long term storage store at -20°C in small aliquots to prevent freeze-thaw cycles.

Precautions

MUM1 Antibody is for research use only and not for use in diagnostic or therapeutic procedures.

MUM1 Antibody - Protein Information

Name PWWP3A ([HGNC:29641](#))

Function

Involved in the DNA damage response pathway by contributing to the maintenance of chromatin architecture. Recruited to the vicinity of DNA breaks by TP53BP1 and plays an accessory role to facilitate damage-induced chromatin changes and promoting chromatin relaxation. Required for efficient DNA repair and cell survival following DNA damage.

Cellular Location

Nucleus. Note=Recruited to DNA damage sites via its interaction with the BRCT domain of TP53BP1

MUM1 Antibody - Protocols

Provided below are standard protocols that you may find useful for product applications.

- [Western Blot](#)
- [Blocking Peptides](#)
- [Dot Blot](#)
- [Immunohistochemistry](#)
- [Immunofluorescence](#)
- [Immunoprecipitation](#)
- [Flow Cytometry](#)
- [Cell Culture](#)

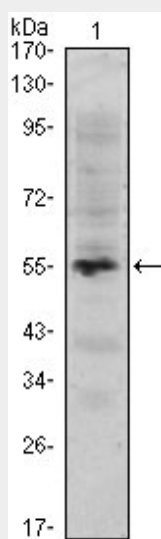
MUM1 Antibody - Images

Figure 1: Western blot analysis using MUM1 mAb against human MUM1 (AA: 590-711) recombinant protein. (Expected MW is 39.8 kDa)

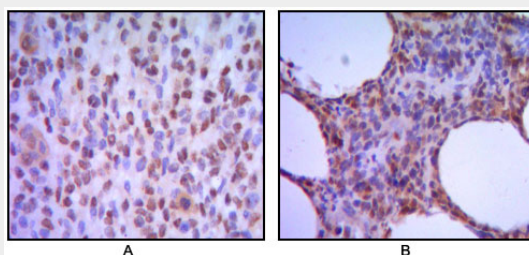


Figure 2: Immunohistochemical analysis of paraffin-embedded human melanoma (A), non-Hodgkin's lymphoma (B), using MUM1 mouse mAb with DAB staining.

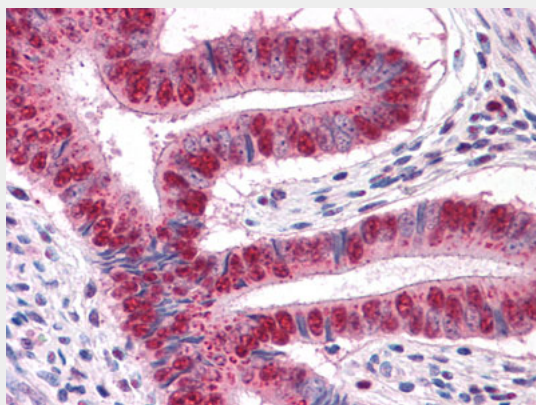


Figure 3: Immunohistochemical analysis of paraffin-embedded human Uterus tissues using MUM1 mouse mAb

MUM1 Antibody - References

1. Genome Res. 1996 Sep;6(9):791-806.
2. Proc Natl Acad Sci U S A. 2002 Dec 24;99(26):16899-903.