

**THAP11 Antibody**  
**Purified Mouse Monoclonal Antibody**  
**Catalog # AO1436a****Specification**

---

**THAP11 Antibody - Product Information**

Application	WB, IHC, IF, FC
Primary Accession	<a href="#">Q96EK4</a>
Reactivity	Human
Host	Mouse
Clonality	Monoclonal
Isotype	IgG1
Calculated MW	44kDa KDa

**Description**

The protein encoded by this gene contains a THAP domain, which is a conserved DNA-binding domain that has striking similarity to the site-specific DNA-binding domain (DBD) of Drosophila P element transposases.

**Immunogen**

Purified recombinant fragment of human THAP11 expressed in E. Coli.

**Formulation**

Ascitic fluid containing 0.03% sodium azide. <br /> <br />

**THAP11 Antibody - Additional Information**

**Gene ID** 57215

**Other Names**

THAP domain-containing protein 11, THAP11

**Dilution**

WB~~1/500 - 1/2000

IHC~~1/200 - 1/1000

IF~~1/200 - 1/1000

FC~~1/200 - 1/400

**Storage**

Maintain refrigerated at 2-8°C for up to 6 months. For long term storage store at -20°C in small aliquots to prevent freeze-thaw cycles.

**Precautions**

THAP11 Antibody is for research use only and not for use in diagnostic or therapeutic procedures.

**THAP11 Antibody - Protein Information**

**Name** THAP11

**Function**

Transcriptional repressor that plays a central role for embryogenesis and the pluripotency of embryonic stem (ES) cells. Sequence-specific DNA-binding factor that represses gene expression in pluripotent ES cells by directly binding to key genetic loci and recruiting epigenetic modifiers (By similarity).

**Cellular Location**

Nucleus. Cytoplasm. Note=May be regulated by shuttling of the protein between the cytoplasm and nucleus.

**THAP11 Antibody - Protocols**

Provided below are standard protocols that you may find useful for product applications.

- [Western Blot](#)
- [Blocking Peptides](#)
- [Dot Blot](#)
- [Immunohistochemistry](#)
- [Immunofluorescence](#)
- [Immunoprecipitation](#)
- [Flow Cytometry](#)
- [Cell Culture](#)

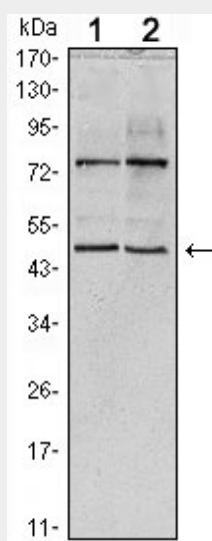
**THAP11 Antibody - Images**

Figure 1: Western blot analysis using THAP11 mouse mAb against HeLa (1) and NTERA-2 (2) cell lysate.

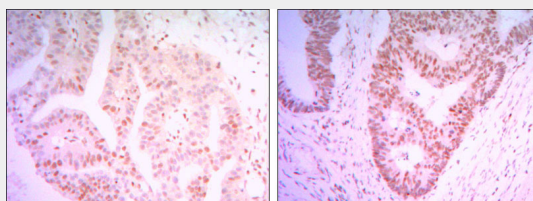


Figure 2: Immunohistochemical analysis of paraffin-embedded colon cancer tissues (left) and ovary cancer tissues (right) using THAP11 mouse mAb with DAB staining.

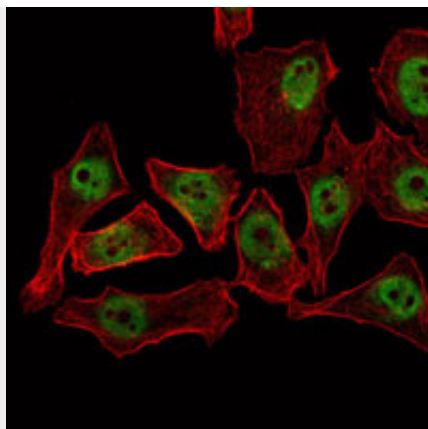


Figure 3: Immunofluorescence analysis of NTERA-2 cells using THAP11 mouse mAb (green). Red: Actin filaments have been labeled with Alexa Fluor-555 phalloidin.

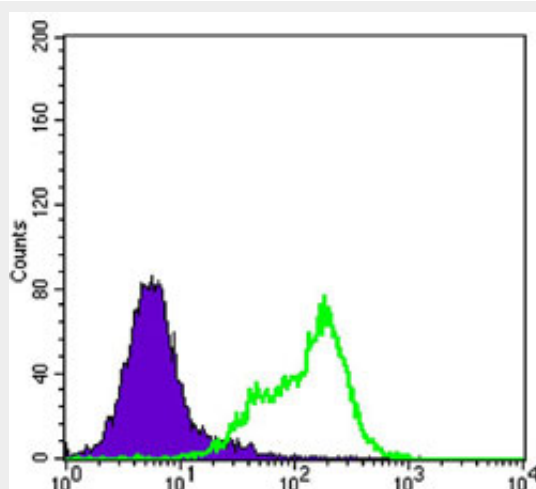


Figure 4: Flow cytometric analysis of Hela cells using THAP11 mouse mAb (green) and negative control (purple).

#### **THAP11 Antibody - References**

1. Genomics. 1993 Jun;16(3):572-9. 2. Cell. 2008 Jun 27;133(7):1162-74. 3. Cell Death Differ. 2009 Mar;16(3):395-405.