

**PTH1R Antibody**  
**Purified Mouse Monoclonal Antibody**  
**Catalog # AO1438a****Specification**

---

**PTH1R Antibody - Product Information**

Application	WB, IHC, IF
Primary Accession	<a href="#">Q03431</a>
Reactivity	Human
Host	Mouse
Clonality	Monoclonal
Isotype	IgG1
Calculated MW	66kDa KDa

**Description**

The protein encoded by this gene is a member of the G-protein coupled receptor family 2. This protein is a receptor for parathyroid hormone (PTH) and for parathyroid hormone-like hormone (PTHrP). The activity of this receptor is mediated by G proteins which activate adenylyl cyclase and also a phosphatidylinositol-calcium second messenger system. Defects in this receptor are known to be the cause of Jansen's metaphyseal chondrodysplasia (JMC), chondrodysplasia Blomstrand type (BOCD), as well as enchondromatosis. Two transcript variants encoding the same protein have been found for this gene.

**Immunogen**

Purified recombinant fragment of human PTH1R expressed in E. Coli.

**Formulation**

Ascitic fluid containing 0.03% sodium azide.

**PTH1R Antibody - Additional Information**

**Gene ID** 5745

**Other Names**

Parathyroid hormone/parathyroid hormone-related peptide receptor, PTH/PTHrP type I receptor, PTH/PTHr receptor, Parathyroid hormone 1 receptor, PTH1 receptor, PTH1R, PTHR, PTHR1

**Dilution**

WB~~1/500 - 1/2000  
IHC~~1/200 - 1/1000  
IF~~1/200 - 1/1000

**Storage**

Maintain refrigerated at 2-8°C for up to 6 months. For long term storage store at -20°C in small aliquots to prevent freeze-thaw cycles.

**Precautions**

PTH1R Antibody is for research use only and not for use in diagnostic or therapeutic procedures.

## PTH1R Antibody - Protein Information

**Name** PTH1R

**Synonyms** PTHR, PTHR1

### Function

Receptor for parathyroid hormone and for parathyroid hormone- related peptide. The activity of this receptor is mediated by G proteins which activate adenylyl cyclase and also a phosphatidylinositol-calcium second messenger system.

### Cellular Location

Cell membrane; Multi-pass membrane protein

### Tissue Location

Expressed in most tissues. Most abundant in kidney, bone and liver.

## PTH1R Antibody - Protocols

Provided below are standard protocols that you may find useful for product applications.

- [Western Blot](#)
- [Blocking Peptides](#)
- [Dot Blot](#)
- [Immunohistochemistry](#)
- [Immunofluorescence](#)
- [Immunoprecipitation](#)
- [Flow Cytometry](#)
- [Cell Culture](#)

## PTH1R Antibody - Images

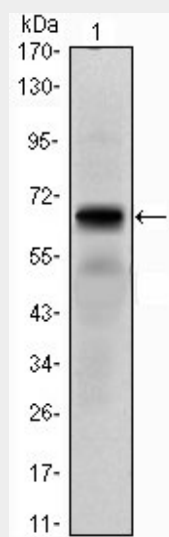


Figure 1: Western blot analysis using PTH1R mAb against PTH1R (AA: 27-188)-hIgGFc transfected HEK293 cell lysate.

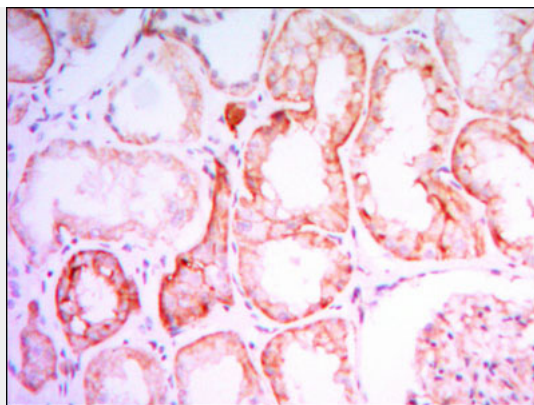


Figure 2: Immunohistochemical analysis of paraffin-embedded human kidney tissues using PTH1R mouse mAb with DAB staining.

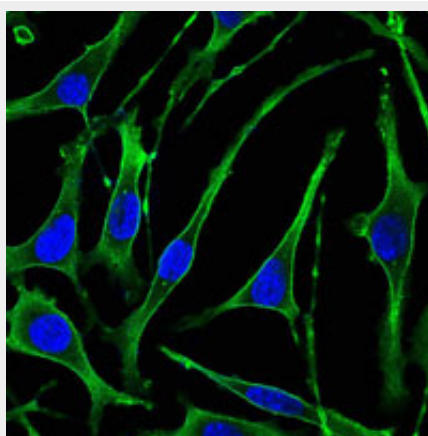


Figure 3: Immunofluorescence analysis of SK-BR-3 cells using PTH1R mouse mAb (green). Blue: DRAQ5 fluorescent DNA dye.

#### **PTH1R Antibody - References**

1. Int J Cancer. 2007 Sep 1;121(5):943-54.
2. Mol Endocrinol. 2008 Jan;22(1):156-66.