

MATN1 Antibody
Purified Mouse Monoclonal Antibody
Catalog # AO1466a**Specification**

MATN1 Antibody - Product Information

Application	WB, IF
Primary Accession	Q00266
Reactivity	Human
Host	Mouse
Clonality	Monoclonal
Isotype	IgG1
Calculated MW	54kDa KDa

Description

This gene catalyzes a two-step reaction that involves the transfer of the adenosyl moiety of ATP to methionine to form S-adenosylmethionine and triphosphosphate, which is subsequently cleaved to PPi and Pi. S-adenosylmethionine is the source of methyl groups for most biological methylations. The encoded protein is found as a homotetramer (MAT I) or a homodimer (MAT III) whereas a third form, MAT II (gamma), is encoded by the MAT2A gene. Mutations in this gene are associated with methionine adenosyltransferase deficiency.

Immunogen

Purified recombinant fragment of human MATN1 expressed in E. Coli.

Formulation

Ascitic fluid containing 0.03% sodium azide.

MATN1 Antibody - Additional Information

Gene ID 4143

Other Names

S-adenosylmethionine synthase isoform type-1, AdoMet synthase 1, 2.5.1.6, Methionine adenosyltransferase 1, MAT 1, Methionine adenosyltransferase I/III, MAT-I/III, MAT1A, AMS1, MATA1

Dilution

WB~~1/500 - 1/2000

IF~~1/200 - 1/1000

Storage

Maintain refrigerated at 2-8°C for up to 6 months. For long term storage store at -20°C in small aliquots to prevent freeze-thaw cycles.

Precautions

MATN1 Antibody is for research use only and not for use in diagnostic or therapeutic procedures.

MATN1 Antibody - Protein Information

Name MAT1A

Synonyms AMS1, MATA1

Function

Catalyzes the formation of S-adenosylmethionine from methionine and ATP. The reaction comprises two steps that are both catalyzed by the same enzyme: formation of S-adenosylmethionine (AdoMet) and triphosphate, and subsequent hydrolysis of the triphosphate.

Tissue Location

Expressed in liver..

MATN1 Antibody - Protocols

Provided below are standard protocols that you may find useful for product applications.

- [Western Blot](#)
- [Blocking Peptides](#)
- [Dot Blot](#)
- [Immunohistochemistry](#)
- [Immunofluorescence](#)
- [Immunoprecipitation](#)
- [Flow Cytometry](#)
- [Cell Culture](#)

MATN1 Antibody - Images

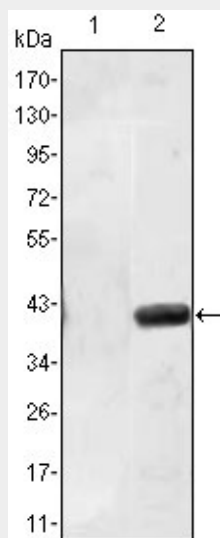


Figure 1: Western blot analysis using MATN1 mAb against HEK293 (1) and MATN1(AA:427-496)-hlgGfC transfected HEK293 (2) cell lysate.

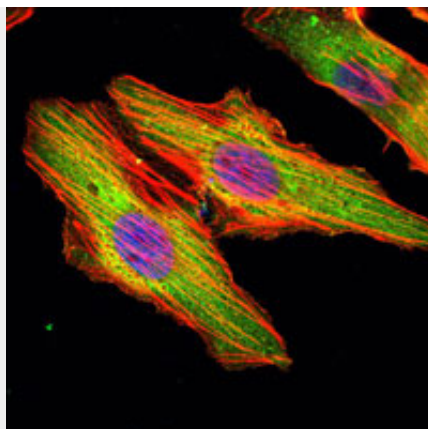


Figure 2: Immunofluorescence analysis of HeLa cells using MATN1 mouse mAb (green). Blue: DRAQ5 fluorescent DNA dye. Red: Actin filaments have been labeled with Alexa Fluor-555 phalloidin.

MATN1 Antibody - References

1. Biochem J. 1993 Jul 15;293 (Pt 2):481-6.
2. Am J Hum Genet. 1997 Mar;60(3):540-6.
3. Am J Hum Genet. 2000 Feb;66(2):347-55.