

**CEA Antibody**  
**Purified Mouse Monoclonal Antibody**  
**Catalog # AO1509a****Specification****CEA Antibody - Product Information**

Application	E, WB, IHC
Primary Accession	<a href="#">P06731</a>
Reactivity	Human
Host	Mouse
Clonality	Monoclonal
Isotype	IgG1
Calculated MW	77kDa KDa

**Description**

Carcino Embryonic Antigen (CEA) is synthesised during development in the fetal gut, and is re-expressed in increased amounts in intestinal carcinomas and several other tumors. Antibodies to CEA are useful in identifying the origin of various metastatic adenocarcinomas and in distinguishing pulmonary adenocarcinomas (60 to 70% are CEA+) from pleural mesotheliomas (rarely or weakly CEA+). The carcinoembryonic antigen (CEA) is a member of a large family of glycoproteins and a useful tumor marker for adenocarcinoma. Tissue specificity: Found in adenocarcinomas of endodermally derived digestive system epithelium and fetal colon.

**Immunogen**

Purified recombinant fragment of human CEA expressed in E. Coli.

**Formulation**

Ascitic fluid containing 0.03% sodium azide.

**CEA Antibody - Additional Information**

**Gene ID** 1048

**Other Names**

Carcinoembryonic antigen-related cell adhesion molecule 5, Carcinoembryonic antigen, CEA, Meconium antigen 100, CD66e, CEACAM5, CEA

**Dilution**

E~~1/10000

WB~~1/500 - 1/2000

IHC~~1/500 - 1/2000

**Storage**

Maintain refrigerated at 2-8°C for up to 6 months. For long term storage store at -20°C in small aliquots to prevent freeze-thaw cycles.

**Precautions**

CEA Antibody is for research use only and not for use in diagnostic or therapeutic procedures.

## CEA Antibody - Protein Information

**Name** CEACAM5

**Synonyms** CEA

### Function

Cell surface glycoprotein that plays a role in cell adhesion, intracellular signaling and tumor progression (PubMed:<a href="http://www.uniprot.org/citations/2803308" target="\_blank">2803308</a>, PubMed:<a href="http://www.uniprot.org/citations/10910050" target="\_blank">10910050</a>, PubMed:<a href="http://www.uniprot.org/citations/10864933" target="\_blank">10864933</a>). Mediates homophilic and heterophilic cell adhesion with other carcinoembryonic antigen-related cell adhesion molecules, such as CEACAM6 (PubMed:<a href="http://www.uniprot.org/citations/2803308" target="\_blank">2803308</a>). Plays a role as an oncogene by promoting tumor progression; induces resistance to anoikis of colorectal carcinoma cells (PubMed:<a href="http://www.uniprot.org/citations/10910050" target="\_blank">10910050</a>).

### Cellular Location

Cell membrane; Lipid-anchor, GPI-anchor. Apical cell membrane. Cell surface Note=Localized to the apical glycocalyx surface

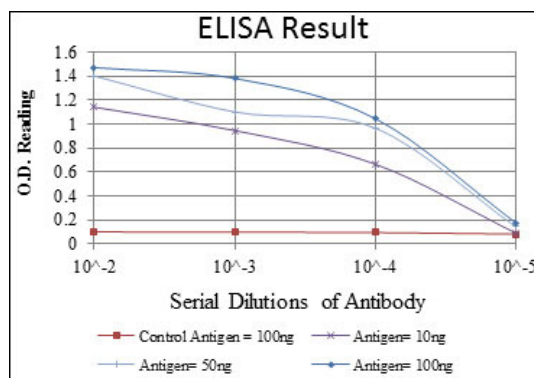
### Tissue Location

Expressed in columnar epithelial and goblet cells of the colon (at protein level) (PubMed:10436421). Found in adenocarcinomas of endodermally derived digestive system epithelium and fetal colon.

## CEA Antibody - Protocols

Provided below are standard protocols that you may find useful for product applications.

- [Western Blot](#)
- [Blocking Peptides](#)
- [Dot Blot](#)
- [Immunohistochemistry](#)
- [Immunofluorescence](#)
- [Immunoprecipitation](#)
- [Flow Cytometry](#)
- [Cell Culture](#)



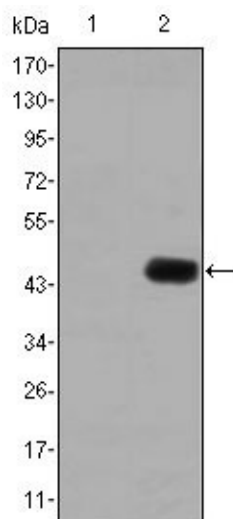


Figure 1: Western blot analysis using CEA mAb against HEK293 (1) and CEA(AA: 460-600)-hIgGFc transfected HEK293 (2) cell lysate.

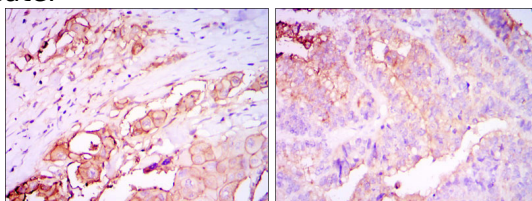


Figure 2: Immunohistochemical analysis of paraffin-embedded rectum cancer tissues (left) and stomach cancer tissues (right) using CEA mouse mAb with DAB staining.

#### CEA Antibody - References

1. Scand J Clin Lab Invest. 2008;68(8):703-13.
2. Xi Bao Yu Fen Zi Mian Yi Xue Za Zhi. 2008 Apr;24(4):370-2. Chinese.