

**MSI1 Antibody**  
**Purified Mouse Monoclonal Antibody**  
**Catalog # AO1529a****Specification****MSI1 Antibody - Product Information**

Application	E, WB, FC
Primary Accession	<a href="#">O43347</a>
Reactivity	Human
Host	Mouse
Clonality	Monoclonal
Isotype	IgG1
Calculated MW	39kDa KDa

**Description**

This gene encodes a protein containing two conserved tandem RNA recognition motifs. Similar proteins in other species function as RNA-binding proteins and play central roles in posttranscriptional gene regulation. Expression of this gene has been correlated with the grade of the malignancy and proliferative activity in gliomas and melanomas. Musashi-1 is frequently used as a marker for proliferating neural precursor cells, it is also expressed in epithelial stem cells including intestinal and mammary gland stem cells. Tissue specificity: Detected in fetal kidney, brain, liver and lung, and in adult brain and pancreas. Detected in hepatoma cell lines.

**Immunogen**

Purified recombinant fragment of human MSI1 expressed in E. Coli.

**Formulation**

Ascitic fluid containing 0.03% sodium azide.

**MSI1 Antibody - Additional Information**

**Gene ID** 4440

**Other Names**

RNA-binding protein Musashi homolog 1, Musashi-1, MSI1

**Dilution**

E~~1/10000

WB~~1/500 - 1/2000

FC~~1/200 - 1/400

**Storage**

Maintain refrigerated at 2-8°C for up to 6 months. For long term storage store at -20°C in small aliquots to prevent freeze-thaw cycles.

**Precautions**

MSI1 Antibody is for research use only and not for use in diagnostic or therapeutic procedures.

**MSI1 Antibody - Protein Information**

**Name** MSI1**Function**

RNA binding protein that regulates the expression of target mRNAs at the translation level. Regulates expression of the NOTCH1 antagonist NUMB. Binds RNA containing the sequence 5'-GUUAGUUAGUUAGUU- 3' and other sequences containing the pattern 5'-[GA]U(1-3)AGU-3'. May play a role in the proliferation and maintenance of stem cells in the central nervous system (By similarity).

**Cellular Location**

Cytoplasm {ECO:0000250|UniProtKB:Q61474}. Nucleus {ECO:0000250|UniProtKB:Q61474}

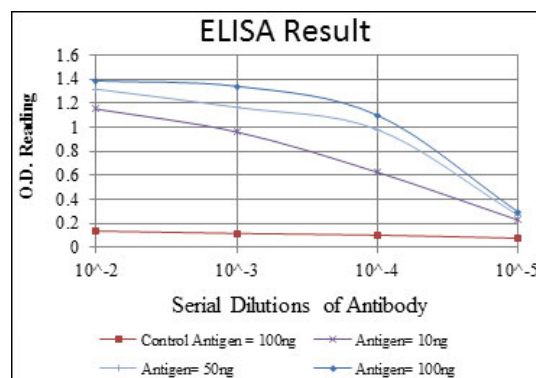
**Tissue Location**

Detected in fetal kidney, brain, liver and lung, and in adult brain and pancreas. Detected in hepatoma cell lines

**MSI1 Antibody - Protocols**

Provided below are standard protocols that you may find useful for product applications.

- [Western Blot](#)
- [Blocking Peptides](#)
- [Dot Blot](#)
- [Immunohistochemistry](#)
- [Immunofluorescence](#)
- [Immunoprecipitation](#)
- [Flow Cytometry](#)
- [Cell Culture](#)



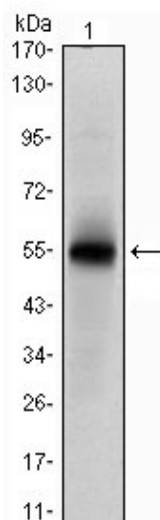


Figure 1: Western blot analysis using MSI1 mAb against human MSI1 (AA: 1-203) recombinant protein. (Expected MW is 48.5 kDa)

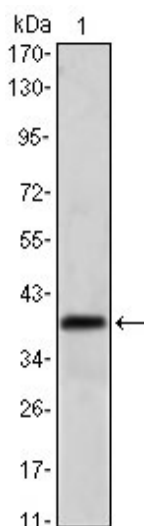


Figure 2: Western blot analysis using MSI1 mouse mAb against NTERA-2 cell lysate.

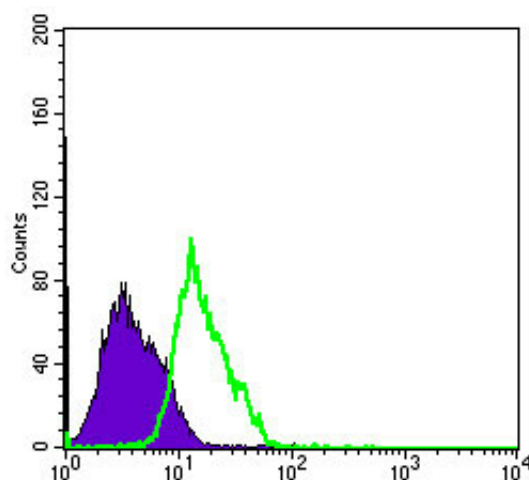


Figure 3: Flow cytometric analysis of PC-2 cells using MSI1 mouse mAb (green) and negative control (purple).

## **MSI1 Antibody - References**

1. BMC Cancer. 2008 Apr 18;8:108.
2. Gastroenterology. 2008 May;134(5):1448-58.