

LHX2 Antibody
Purified Mouse Monoclonal Antibody
Catalog # AO1542a**Specification****LHX2 Antibody - Product Information**

Application	E, WB, IF
Primary Accession	P50458
Reactivity	Human
Host	Mouse
Clonality	Monoclonal
Isotype	IgG1
Calculated MW	44kDa KDa

Description

This gene encodes a protein belonging to a large protein family, members of which carry the LIM domain, a unique cysteine-rich zinc-binding domain. The encoded protein may function as a transcriptional regulator. The protein can recapitulate or rescue phenotypes in Drosophila caused by a related protein, suggesting conservation of function during evolution.

Immunogen

Purified recombinant fragment of human LHX2 expressed in E. Coli.

Formulation

Ascitic fluid containing 0.03% sodium azide.

LHX2 Antibody - Additional Information

Gene ID 9355

Other Names

LIM/homeobox protein Lhx2, Homeobox protein LH-2, LIM homeobox protein 2, LHX2, LH2

Dilution

E~~1/10000

WB~~1/500 - 1/2000

IF~~1/200 - 1/1000

Storage

Maintain refrigerated at 2-8°C for up to 6 months. For long term storage store at -20°C in small aliquots to prevent freeze-thaw cycles.

Precautions

LHX2 Antibody is for research use only and not for use in diagnostic or therapeutic procedures.

LHX2 Antibody - Protein Information

Name LHX2

Synonyms LH2

Function

Acts as a transcriptional activator. Stimulates the promoter of the alpha-glycoprotein gene. Transcriptional regulatory protein involved in the control of cell differentiation in developing lymphoid and neural cell types (By similarity).

Cellular Location

Nucleus.

LHX2 Antibody - Protocols

Provided below are standard protocols that you may find useful for product applications.

- [Western Blot](#)
- [Blocking Peptides](#)
- [Dot Blot](#)
- [Immunohistochemistry](#)
- [Immunofluorescence](#)
- [Immunoprecipitation](#)
- [Flow Cytometry](#)
- [Cell Culture](#)

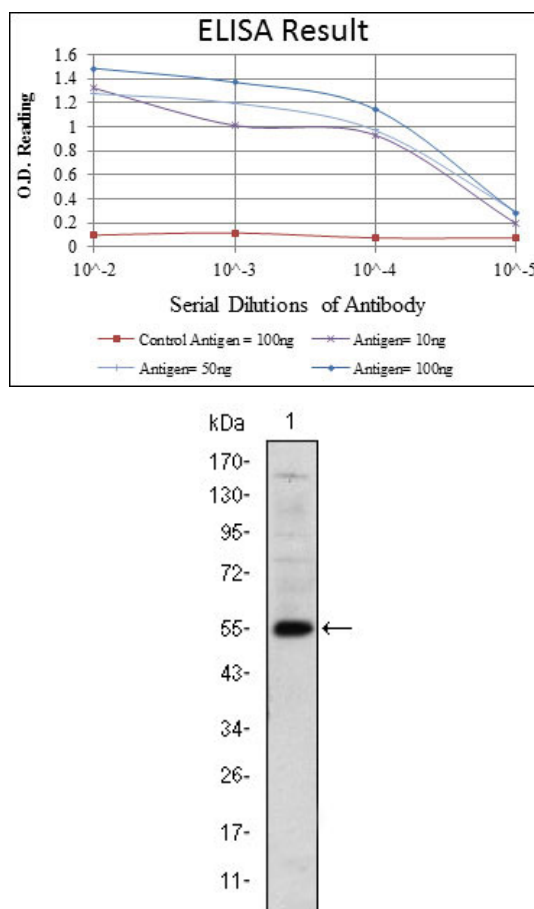


Figure 1: Western blot analysis using LHX2 mAb against human LHX2 (AA: 200-406) recombinant protein. (Expected MW is 55 kDa)

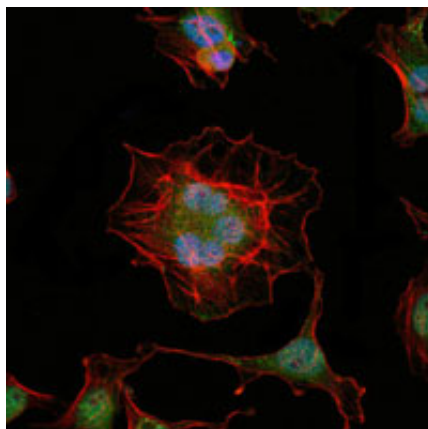


Figure 2: Immunofluorescence analysis of HeLa cells using LHX2 mouse mAb (green). Blue: DRAQ5 fluorescent DNA dye. Red: Actin filaments have been labeled with Alexa Fluor-555 phalloidin.

LHX2 Antibody - References

1. PLoS One. 2008 Apr 23;3(4):e2025.
2. Science. 2008 Jan 18;319(5861):304-9.