

KID Antibody
Purified Mouse Monoclonal Antibody
Catalog # AO1625a**Specification****KID Antibody - Product Information**

Application	E, WB, IHC
Primary Accession	Q14807
Reactivity	Human
Host	Mouse
Clonality	Monoclonal
Isotype	IgG1
Calculated MW	73kDa KDa

Description

The protein encoded by this gene is a member of kinesin-like protein family. This family of proteins are microtubule-dependent molecular motors that transport organelles within cells and move chromosomes during cell division. The C-terminal half of this protein has been shown to bind DNA. Studies with the *Xenopus* homolog suggests its essential role in metaphase chromosome alignment and maintenance.

Immunogen

Purified recombinant fragment of human KID expressed in *E. Coli*.

Formulation

Ascitic fluid containing 0.03% sodium azide.

KID Antibody - Additional Information

Gene ID 3835

Other Names

Kinesin-like protein KIF22, Kinesin-like DNA-binding protein, Kinesin-like protein 4, KIF22, KID, KN4SL4

Dilution

E~~1/10000
WB~~1/500 - 1/2000
IHC~~1/200 - 1/1000

Storage

Maintain refrigerated at 2-8°C for up to 6 months. For long term storage store at -20°C in small aliquots to prevent freeze-thaw cycles.

Precautions

KID Antibody is for research use only and not for use in diagnostic or therapeutic procedures.

KID Antibody - Protein Information

Name KIF22

Synonyms KID, KNSL4

Function

Kinesin family member that is involved in spindle formation and the movements of chromosomes during mitosis and meiosis. Binds to microtubules and to DNA (By similarity). Plays a role in congression of laterally attached chromosomes in NDC80-depleted cells (PubMed:25743205).

Cellular Location

Nucleus. Cytoplasm, cytoskeleton

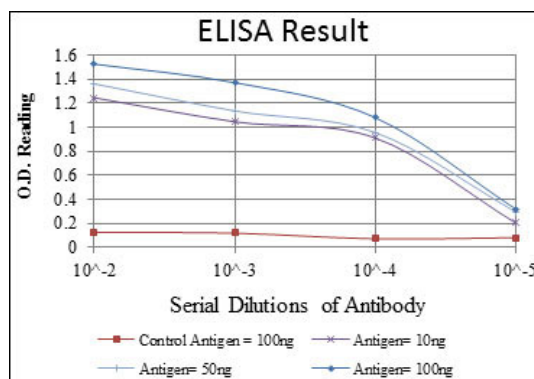
Tissue Location

Expressed in bone, cartilage, joint capsule, ligament, skin, and primary cultured chondrocytes

KID Antibody - Protocols

Provided below are standard protocols that you may find useful for product applications.

- [Western Blot](#)
- [Blocking Peptides](#)
- [Dot Blot](#)
- [Immunohistochemistry](#)
- [Immunofluorescence](#)
- [Immunoprecipitation](#)
- [Flow Cytometry](#)
- [Cell Culture](#)



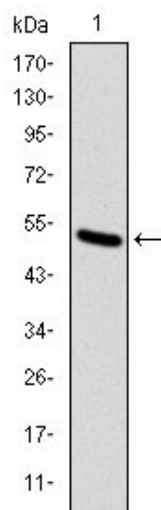


Figure 1: Western blot analysis using KID mAb against human KID (AA: 225-419) recombinant protein. (Expected MW is 47 kDa)

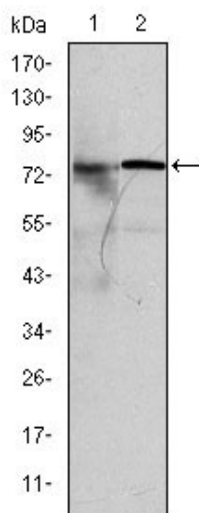


Figure 2: Western blot analysis using KID mouse mAb against MCF-7 (1) and Hela (2) cell lysate.

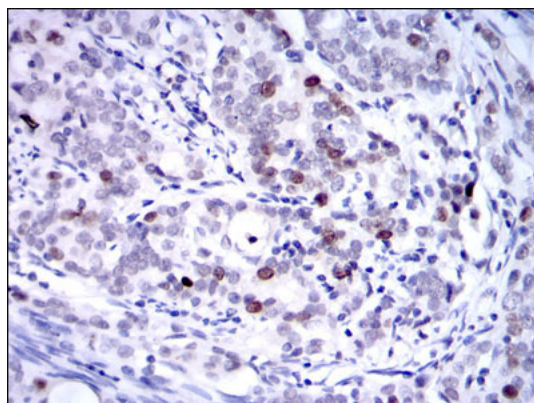


Figure 3: Immunohistochemical analysis of paraffin-embedded cervical cancer tissues using KID mouse mAb with DAB staining.

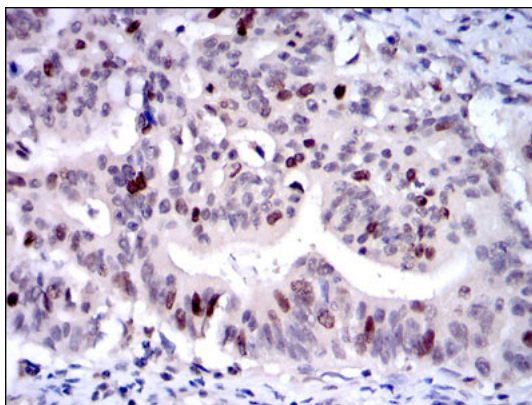


Figure 4: Immunohistochemical analysis of paraffin-embedded rectum cancer tissues using KID mouse mAb with DAB staining.

KID Antibody - References

1. Cell. 2008 Mar 7;132(5):771-82.
2. Retrovirology. 2009 May 19;6:47.