

ASS1 Antibody
Purified Mouse Monoclonal Antibody
Catalog # AO1671a**Specification****ASS1 Antibody - Product Information**

Application	E, WB, IHC
Primary Accession	P00966
Reactivity	Human, Mouse, Monkey
Host	Mouse
Clonality	Monoclonal
Isotype	IgG1
Calculated MW	47kDa KDa

Description

The protein encoded by this gene catalyzes the penultimate step of the arginine biosynthetic pathway. There are approximately 10 to 14 copies of this gene including the pseudogenes scattered across the human genome, among which the one located on chromosome 9 appears to be the only functional gene for argininosuccinate synthetase. Mutations in the chromosome 9 copy of ASS cause citrullinemia. Two transcript variants encoding the same protein have been found for this gene.

Immunogen

Purified recombinant fragment of human ASS1 expressed in E. Coli.

Formulation

Purified antibody in PBS with 0.05% sodium azide

ASS1 Antibody - Additional Information

Gene ID 445

Other Names

Argininosuccinate synthase, 6.3.4.5, Citrulline--aspartate ligase, ASS1, ASS

Dilution

E~~1/10000
WB~~1/500 - 1/2000
IHC~~1/200 - 1/1000

Storage

Maintain refrigerated at 2-8°C for up to 6 months. For long term storage store at -20°C in small aliquots to prevent freeze-thaw cycles.

Precautions

ASS1 Antibody is for research use only and not for use in diagnostic or therapeutic procedures.

ASS1 Antibody - Protein Information

Name ASS1 ([HGNC:758](#))

Function

One of the enzymes of the urea cycle, the metabolic pathway transforming neurotoxic ammonia produced by protein catabolism into innocuous urea in the liver of ureotelic animals. Catalyzes the formation of arginosuccinate from aspartate, citrulline and ATP and together with ASL it is responsible for the biosynthesis of arginine in most body tissues.

Cellular Location

Cytoplasm, cytosol

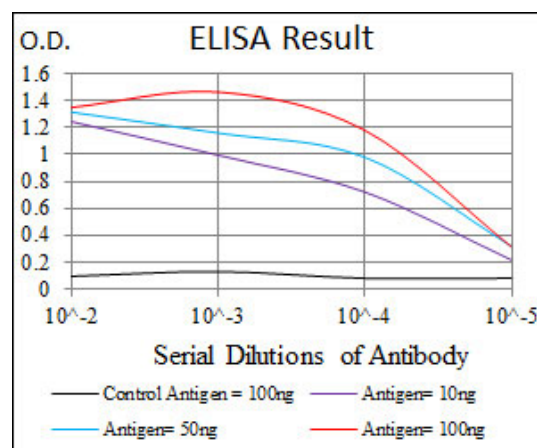
Tissue Location

Expressed in adult liver.

ASS1 Antibody - Protocols

Provided below are standard protocols that you may find useful for product applications.

- [Western Blot](#)
- [Blocking Peptides](#)
- [Dot Blot](#)
- [Immunohistochemistry](#)
- [Immunofluorescence](#)
- [Immunoprecipitation](#)
- [Flow Cytometry](#)
- [Cell Culture](#)



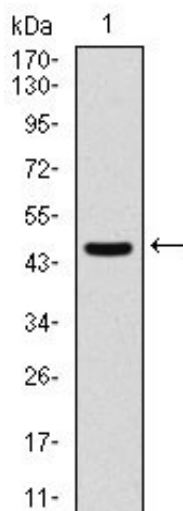


Figure 1: Western blot analysis using ASS1 mAb against human ASS1 (AA: 40-236) recombinant protein. (Expected MW is 47 kDa)

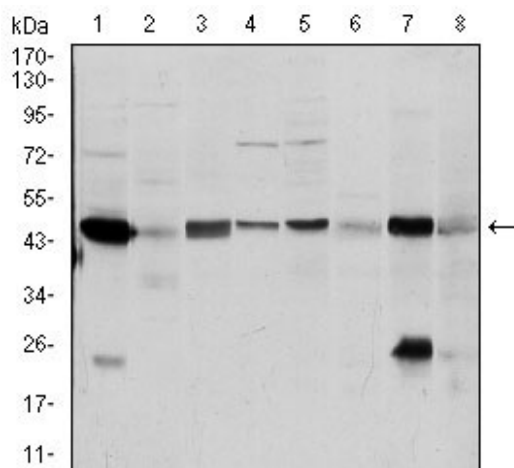


Figure 2: Western blot analysis using ASS1 mouse mAb against A431 (1), RAJI (2), MOLT4 (3), Jurkat (4), A549 (5), NIH/3T3 (6), PC-12 (7) and Cos7 (8) cell lysate.

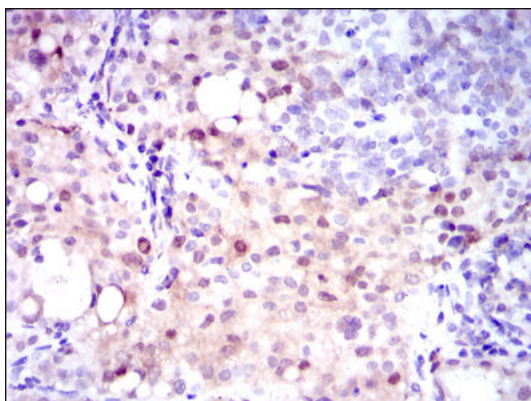


Figure 3: Immunohistochemical analysis of paraffin-embedded cervical cancer tissues using ASS1 mouse mAb with DAB staining.

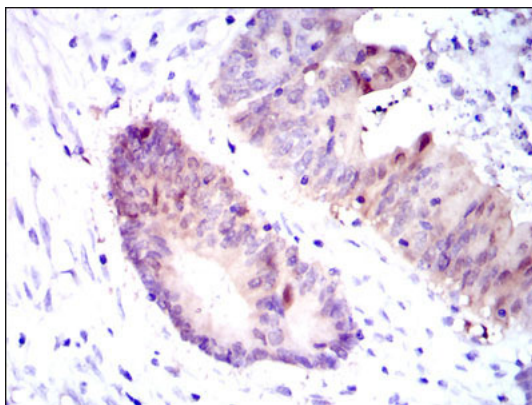


Figure 4: Immunohistochemical analysis of paraffin-embedded colon cancer tissues using ASS1 mouse mAb with DAB staining.

ASS1 Antibody - References

1. Int J Cancer. 2009 Sep 15;125(6):1454-63.
2. Clin Biochem. 2009 Jul;42(10-11):1166-8.