

**COTL1 Antibody**  
**Purified Mouse Monoclonal Antibody**  
**Catalog # AO1672a****Specification****COTL1 Antibody - Product Information**

Application	E, WB, FC
Primary Accession	<a href="#">Q14019</a>
Reactivity	Human
Host	Mouse
Clonality	Monoclonal
Isotype	IgG1
Calculated MW	16kDa KDa

**Description**

This gene encodes one of the numerous actin-binding proteins which regulate the actin cytoskeleton. This protein binds F-actin, and also interacts with 5-lipoxygenase, which is the first committed enzyme in leukotriene biosynthesis. Although this gene has been reported to map to chromosome 17 in the Smith-Magenis syndrome region, the best alignments for this gene are to chromosome 16. The Smith-Magenis syndrome region is the site of two related pseudogenes.

**Immunogen**

Purified recombinant fragment of human COTL1 expressed in E. Coli. <br />

**Formulation**

Purified antibody in PBS with 0.05% sodium azide

**COTL1 Antibody - Additional Information**

**Gene ID** 23406

**Other Names**

Coactosin-like protein, COTL1, CLP

**Dilution**

E~~1/10000

WB~~1/500 - 1/2000

FC~~1/200 - 1/400

**Storage**

Maintain refrigerated at 2-8°C for up to 6 months. For long term storage store at -20°C in small aliquots to prevent freeze-thaw cycles.

**Precautions**

COTL1 Antibody is for research use only and not for use in diagnostic or therapeutic procedures.

**COTL1 Antibody - Protein Information**

**Name** COTL1

**Synonyms** CLP

**Function**

Binds to F-actin in a calcium-independent manner. Has no direct effect on actin depolymerization. Acts as a chaperone for ALOX5 (5LO), influencing both its stability and activity in leukotrienes synthesis.

**Cellular Location**

Cytoplasm. Cytoplasm, cytoskeleton. Nucleus

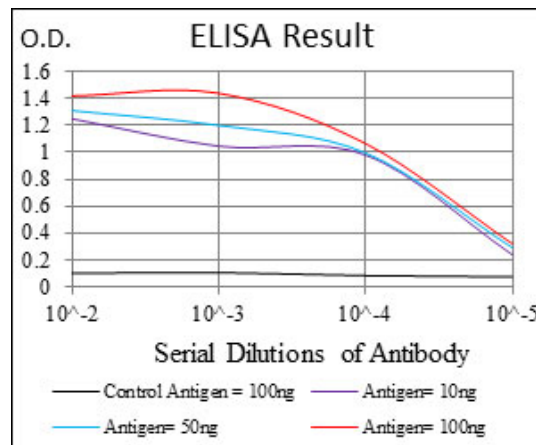
**Tissue Location**

Widely expressed with highest levels in placenta, lung, kidney and peripheral blood leukocytes and lower levels in brain, liver and pancreas.

**COTL1 Antibody - Protocols**

Provided below are standard protocols that you may find useful for product applications.

- [Western Blot](#)
- [Blocking Peptides](#)
- [Dot Blot](#)
- [Immunohistochemistry](#)
- [Immunofluorescence](#)
- [Immunoprecipitation](#)
- [Flow Cytometry](#)
- [Cell Culture](#)



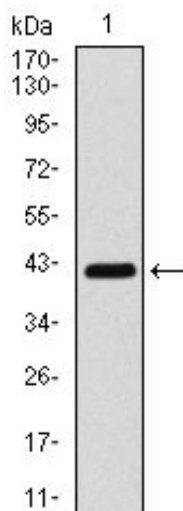


Figure 1: Western blot analysis using COTL1 mAb against human COTL1 (AA: 1-142) recombinant protein. (Expected MW is 16 kDa)

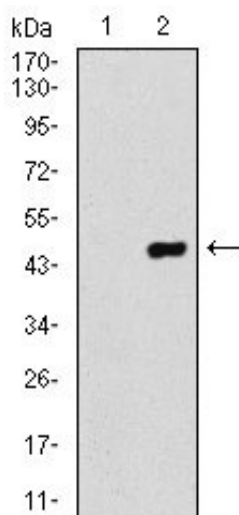


Figure 2: Western blot analysis using COTL1 mAb against HEK293 (1) and COTL1 (AA: 1-142)-hIgGFc transfected HEK293 (2) cell lysate.

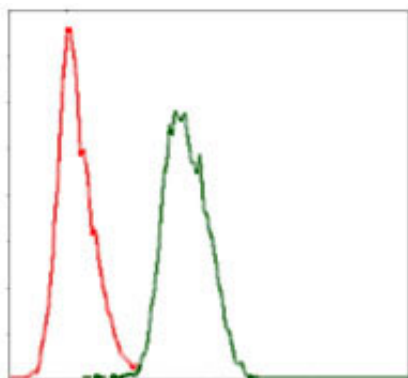


Figure 3: Flow cytometric analysis of HeLa cells using COTL1 mouse mAb (green) and negative control (red).

**COTL1 Antibody - References**

1. Biochem J. 2009 Dec 14;425(1):265-74.
2. Exp Mol Med. 2009 May 31;41(5):354-61.