

**troponin T2 Antibody**  
**Purified Mouse Monoclonal Antibody**  
**Catalog # AO1711a****Specification****troponin T2 Antibody - Product Information**

|                   |                        |
|-------------------|------------------------|
| Application       | E, WB, FC              |
| Primary Accession | <a href="#">P45379</a> |
| Reactivity        | Human                  |
| Host              | Mouse                  |
| Clonality         | Monoclonal             |
| Isotype           | IgG1                   |
| Calculated MW     | 36kDa KDa              |

**Description**

The protein encoded by this gene is the tropomyosin-binding subunit of the troponin complex, which is located on the thin filament of striated muscles and regulates muscle contraction in response to alterations in intracellular calcium ion concentration. Mutations in this gene have been associated with familial hypertrophic cardiomyopathy as well as with dilated cardiomyopathy. Transcripts for this gene undergo alternative splicing that results in many tissue-specific isoforms, however, the full-length nature of some of these variants has not yet been determined.

**Immunogen**

Purified recombinant fragment of human troponin T2 expressed in E. Coli. <br />

**Formulation**

Ascitic fluid containing 0.03% sodium azide. <br />

**troponin T2 Antibody - Additional Information**

**Gene ID** 7139

**Other Names**

Troponin T, cardiac muscle, TnTc, Cardiac muscle troponin T, cTnT, TNNT2

**Dilution**

E~~1/10000  
WB~~1/500 - 1/2000  
FC~~1/200 - 1/400

**Storage**

Maintain refrigerated at 2-8°C for up to 6 months. For long term storage store at -20°C in small aliquots to prevent freeze-thaw cycles.

**Precautions**

troponin T2 Antibody is for research use only and not for use in diagnostic or therapeutic procedures.

**troponin T2 Antibody - Protein Information**

**Name** TNNT2**Function**

Troponin T is the tropomyosin-binding subunit of troponin, the thin filament regulatory complex which confers calcium-sensitivity to striated muscle actomyosin ATPase activity.

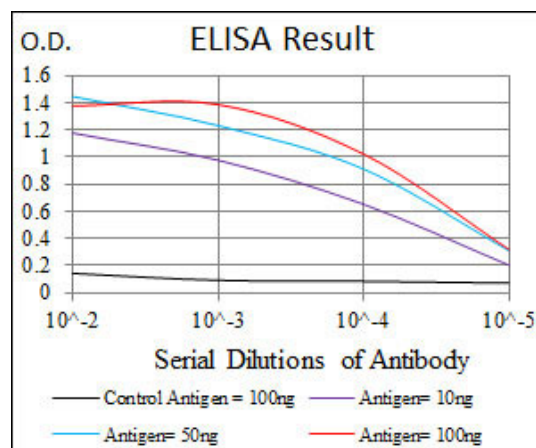
**Tissue Location**

Heart. The fetal heart shows a greater expression in the atrium than in the ventricle, while the adult heart shows a greater expression in the ventricle than in the atrium. Isoform 6 predominates in normal adult heart. Isoforms 1, 7 and 8 are expressed in fetal heart. Isoform 7 is also expressed in failing adult heart

**troponin T2 Antibody - Protocols**

Provided below are standard protocols that you may find useful for product applications.

- [Western Blot](#)
- [Blocking Peptides](#)
- [Dot Blot](#)
- [Immunohistochemistry](#)
- [Immunofluorescence](#)
- [Immunoprecipitation](#)
- [Flow Cytometry](#)
- [Cell Culture](#)



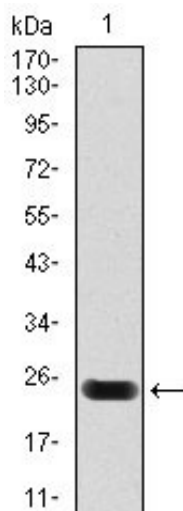


Figure 1: Western blot analysis using troponin T2 mAb against human troponin T2 (AA: 88-249) recombinant protein. (Expected MW is 25.1 kDa)

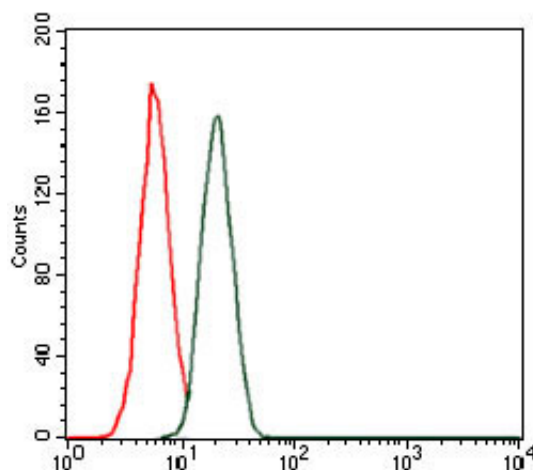


Figure 2: Flow cytometric analysis of MCF-7 cells using troponin T2 mouse mAb (green) and negative control (red).

### troponin T2 Antibody - References

Cardiovasc Res. 2010 Jun 1;86(3):452-60. Circ Cardiovasc Genet. 2009 Aug;2(4):306-13.