

mouse Lplunc1 Antibody
Purified Mouse Monoclonal Antibody
Catalog # AO1714a**Specification****mouse Lplunc1 Antibody - Product Information**

Application	E, WB, IHC, FC, IF
Primary Accession	Q61114
Reactivity	Human
Host	Mouse
Clonality	Monoclonal
Isotype	IgG1
Calculated MW	52.4kDa KDa

Description

Palate, lung, and nasal epithelium clone (Plunc, now renamed Splunc1) is a small secreted protein expressed in the oropharynx and upper airways of humans, mice, rats, and cows. This protein is structurally homologous to known mediators of host defense against gram-negative bacteria.

Immunogen

Purified recombinant fragment of mouse Lplunc1 expressed in E. Coli.

Formulation

Purified antibody in PBS with 0.05% sodium azide

mouse Lplunc1 Antibody - Additional Information

Gene ID 228801

Other Names

BPI fold-containing family B member 1, Long palate, lung and nasal epithelium carcinoma-associated protein 1, Bpifb1, Lplunc1

Dilution

E~~1/10000
WB~~1/500 - 1/2000
IHC~~1/200 - 1/1000
FC~~1/200 - 1/400
IF~~1/200 - 1/1000

Storage

Maintain refrigerated at 2-8°C for up to 6 months. For long term storage store at -20°C in small aliquots to prevent freeze-thaw cycles.

Precautions

mouse Lplunc1 Antibody is for research use only and not for use in diagnostic or therapeutic procedures.

mouse Lplunc1 Antibody - Protein Information

Name Bpifb1

Synonyms Lplunc1

Function

May play a role in innate immunity in mouth, nose and lungs. Binds bacterial lipopolysaccharide (LPS) and modulates the cellular responses to LPS. May be involved in formation of the left-right axis in the node of the developing embryo.

Cellular Location

Secreted.

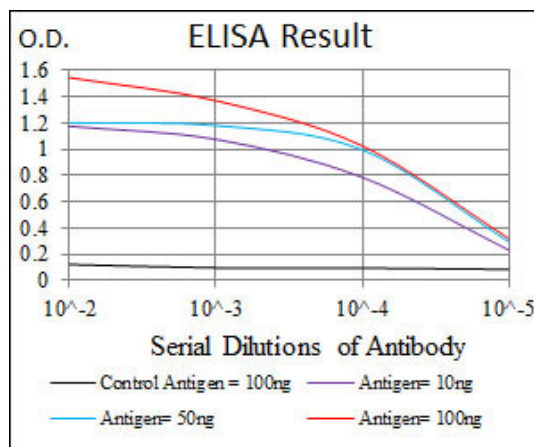
Tissue Location

Expressed in tongue, lung, thymus, and stomach. Expressed in epithelia of palate, anterior pharynx, trachea and upper bronchi. Expressed in distal tip of papillae in the anterior third of the tongue and in serous cells of von Ebner glands in the posterior third of the tongue. Expressed in columnar epithelium of the duodenum in embryonic gut at 16.5 dpc.

mouse Lplunc1 Antibody - Protocols

Provided below are standard protocols that you may find useful for product applications.

- [Western Blot](#)
- [Blocking Peptides](#)
- [Dot Blot](#)
- [Immunohistochemistry](#)
- [Immunofluorescence](#)
- [Immunoprecipitation](#)
- [Flow Cytometry](#)
- [Cell Culture](#)



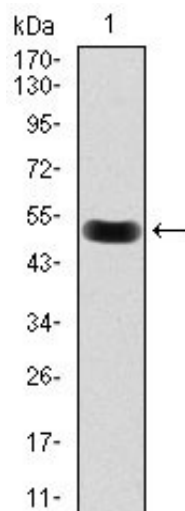


Figure 1: Western blot analysis using Lplunc1 mAb against mouse Lplunc1 (AA: 248-475) recombinant protein. (Expected MW is 50.8 kDa)

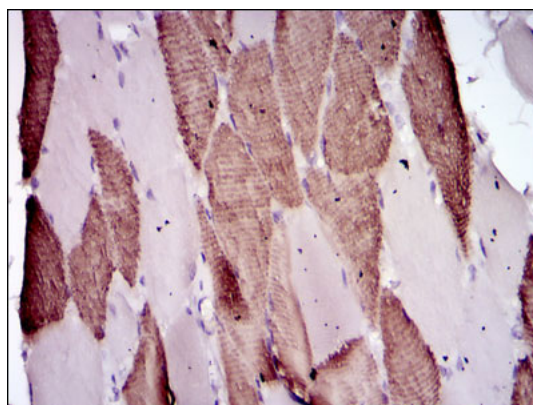


Figure 2: Immunohistochemical analysis of paraffin-embedded muscle tissues using Lplunc1 mouse mAb with DAB staining.

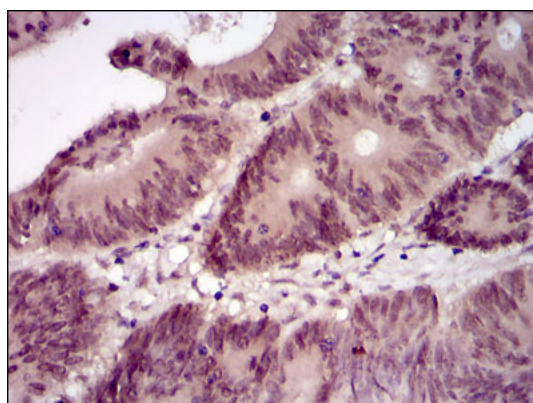


Figure 2: Immunohistochemical analysis of paraffin-embedded colon cancer tissues using Lplunc1 mouse mAb with DAB staining.

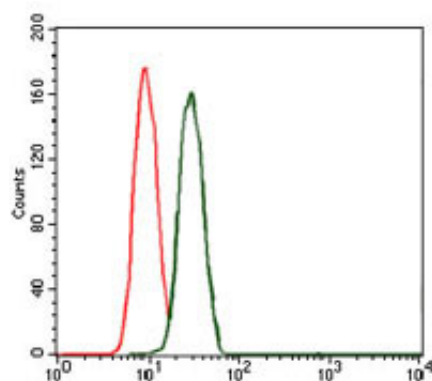


Figure 4: Flow cytometric analysis of MCF-7 cells using Lplunc1 mouse mAb (green) and negative control (red).

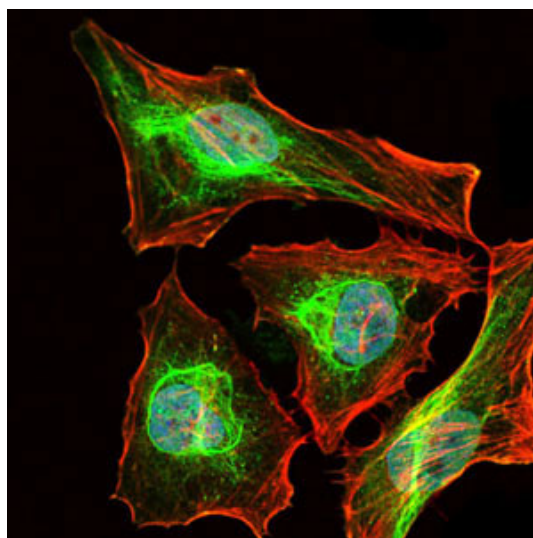


Figure 5: Immunofluorescence analysis of HeLa cells using Lplunc1 mouse mAb (green). Blue: DRAQ5 fluorescent DNA dye. Red: Actin filaments have been labeled with Alexa Fluor-555 phalloidin.

mouse Lplunc1 Antibody - References

1. Briand F, et al. Clin Transl Sci, 2011 Dec.
2. Tang T, et al. Nat Biotechnol, 2010 Jul