

**STAT5A Antibody**  
**Purified Mouse Monoclonal Antibody**  
**Catalog # AO1770a****Specification****STAT5A Antibody - Product Information**

Application	E, WB, IF, FC, IHC
Primary Accession	<a href="#">P42229</a>
Reactivity	Human
Host	Mouse
Clonality	Monoclonal
Isotype	IgG1
Calculated MW	90.6kDa KDa

**Description**

The protein encoded by this gene is a member of the STAT family of transcription factors. In response to cytokines and growth factors, STAT family members are phosphorylated by the receptor associated kinases, and then form homo- or heterodimers that translocate to the cell nucleus where they act as transcription activators. This protein is activated by, and mediates the responses of many cell ligands, such as IL2, IL3, IL7 GM-CSF, erythropoietin, thrombopoietin, and different growth hormones. Activation of this protein in myeloma and lymphoma associated with a TEL/JAK2 gene fusion is independent of cell stimulus and has been shown to be essential for the tumorigenesis. The mouse counterpart of this gene is found to induce the expression of BCL2L1/BCL-X(L), which suggests the antiapoptotic function of this gene in cells.

**Immunogen**

Purified recombinant fragment of human STAT5A (AA: 583-794 ) expressed in E. Coli.

**Formulation**

Purified antibody in PBS with 0.05% sodium azide

**STAT5A Antibody - Additional Information**

**Gene ID** 6776

**Other Names**

Signal transducer and activator of transcription 5A, STAT5A, STAT5

**Dilution**

E~~1/10000  
WB~~1/500 - 1/2000  
IF~~1/50  
FC~~1/200 - 1/400  
IHC~~1/200 - 1/1000

**Storage**

Maintain refrigerated at 2-8°C for up to 6 months. For long term storage store at -20°C in small aliquots to prevent freeze-thaw cycles.

**Precautions**

STAT5A Antibody is for research use only and not for use in diagnostic or therapeutic procedures.

## STAT5A Antibody - Protein Information

**Name** STAT5A

**Synonyms** STAT5

### Function

Carries out a dual function: signal transduction and activation of transcription. Mediates cellular responses to the cytokine KITLG/SCF and other growth factors. Mediates cellular responses to ERBB4. May mediate cellular responses to activated FGFR1, FGFR2, FGFR3 and FGFR4. Binds to the GAS element and activates PRL- induced transcription. Regulates the expression of milk proteins during lactation.

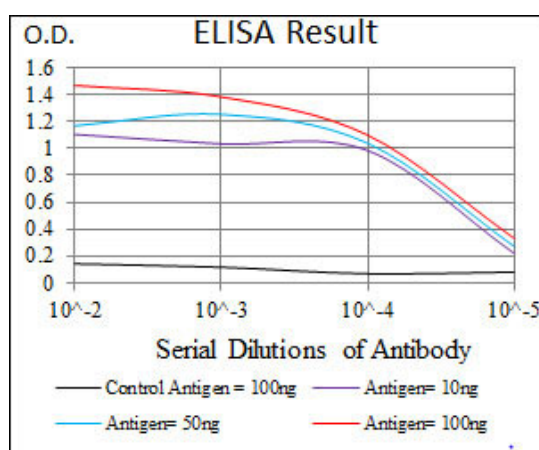
### Cellular Location

Cytoplasm. Nucleus. Note=Translocated into the nucleus in response to phosphorylation

## STAT5A Antibody - Protocols

Provided below are standard protocols that you may find useful for product applications.

- [Western Blot](#)
- [Blocking Peptides](#)
- [Dot Blot](#)
- [Immunohistochemistry](#)
- [Immunofluorescence](#)
- [Immunoprecipitation](#)
- [Flow Cytometry](#)
- [Cell Culture](#)



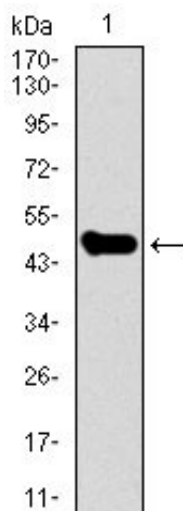


Figure 1: Western blot analysis using STAT5A mAb against human STAT5A recombinant protein. (Expected MW is 49.3 kDa)

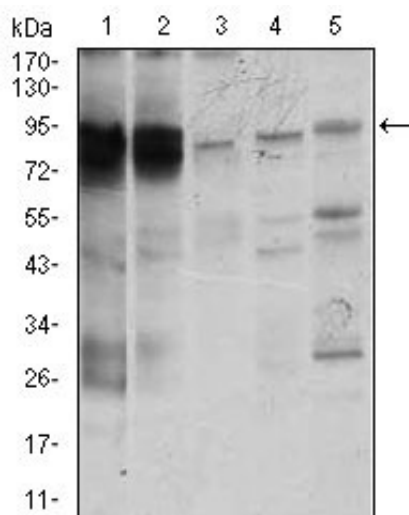


Figure 2: Western blot analysis using STAT5A mouse mAb against K562 (1), MOLT4 (2), HeLa (3), Jurkat (4), and A431 (5) cell lysate.

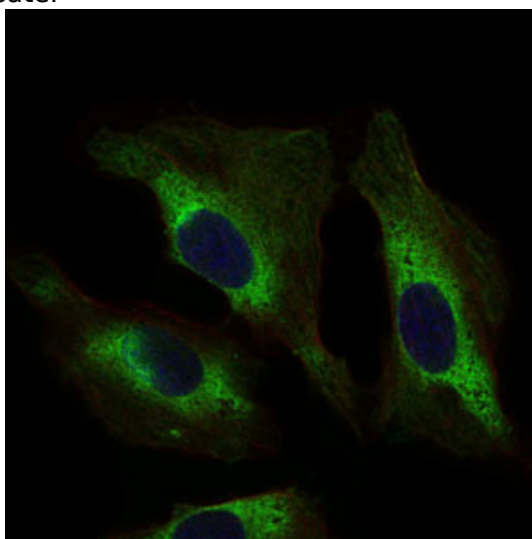


Figure 3: Immunofluorescence analysis of HeLa cells using STAT5A mouse mAb (green). Blue: DRAQ5 fluorescent DNA dye.

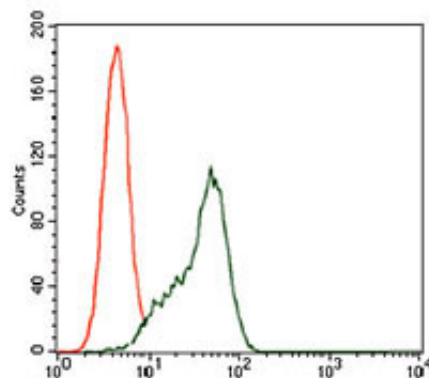


Figure 4: Flow cytometric analysis of K562 cells using STAT5A mouse mAb (green) and negative control (red).

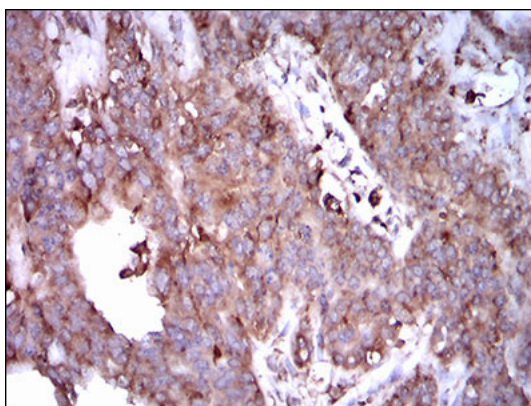


Figure 5: Immunohistochemical analysis of paraffin-embedded ovarian cancer tissues using STAT5A mouse mAb with DAB staining.

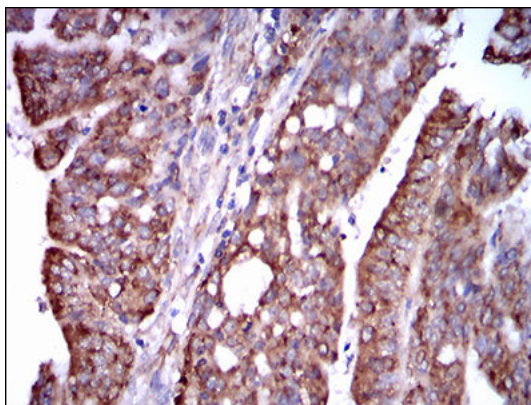


Figure 6: Immunohistochemical analysis of paraffin-embedded rectum cancer tissues using STAT5A mouse mAb with DAB staining.

#### STAT5A Antibody - References

1.Cancer Res. 2011 May 15;71(10):3720-31. 2.Blood. 2011 Mar 24;117(12):3409-20.